

VIROQUA, WISCONSIN


AL-10182 (FAA)


24025

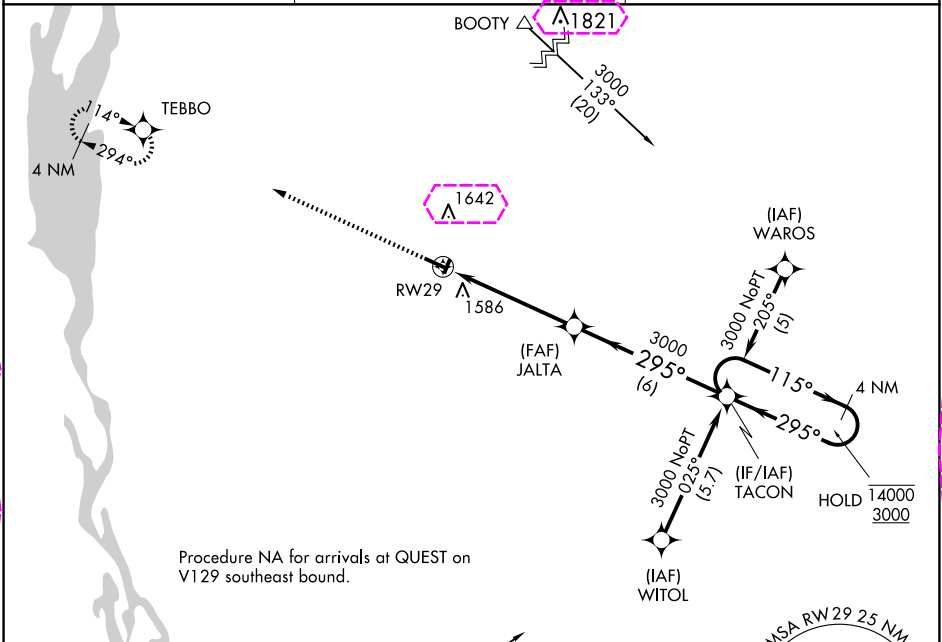
APP CRS	Rwy Idg	4000
295°	TDZE	1292
	Apt Elev	1292

RNAV (GPS) RWY 29

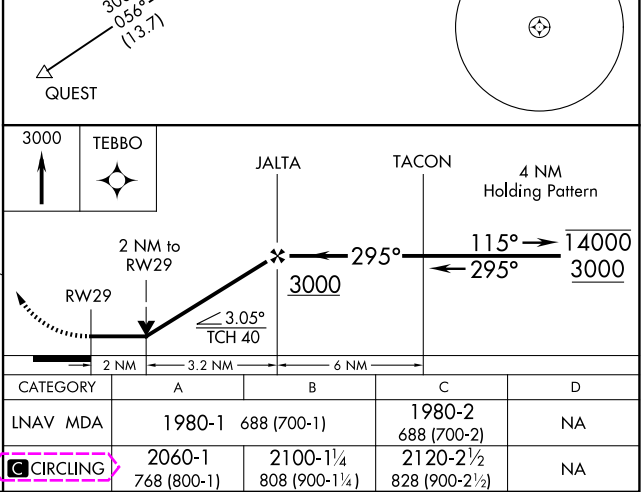
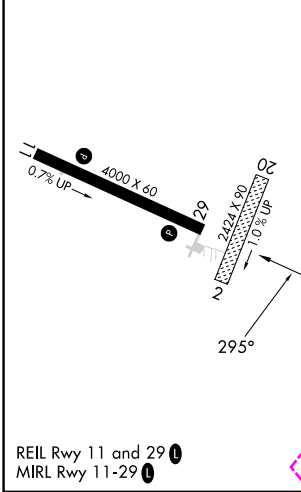
VIROQUA MUNI (Y51)

RNP APCH.	MISSED APPROACH: Climb to 3000 direct TEBBO and hold.
 Circling NA to Rwy 2 and 20. Rwy 29 helicopter visibility reduction below 3/4 SM NA.	

AWOS-3P 118.975	MINNEAPOLIS CENTER 128.6 363.0	CTAF 122.9 
--------------------	-----------------------------------	---



ELEV 1292	TDZE 1292
-----------	-----------



VIROQUA, WISCONSIN

Orig-C 26MAR20

43°35'N-90°54'W

RNAV (GPS) RWY 29

EC-3, 10 JUL 2025 to 07 AUG 2025

EC-3, 10 JUL 2025 to 07 AUG 2025

VIROQUA, WISCONSIN

AL-10182 (FAA)

25219

APP CRS
295°

Rwy Ldg **4000**
TDZE **1292**
Apt Elev **1292**

RNAV (GPS) RWY 29

VIROQUA MUNI (Y51)

RNP APCH.

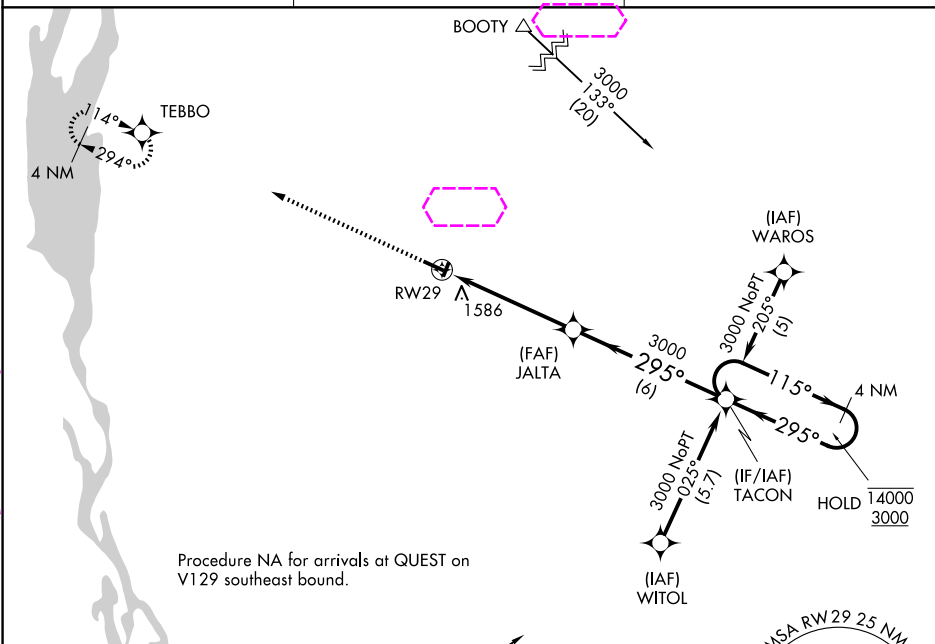
⚠ Circling NA to Rwy 2 and 20. Rwy 29 helicopter visibility reduction below $\frac{3}{4}$ SM NA.

MISSED APPROACH: Climb to 3000 direct TEBBO and hold.

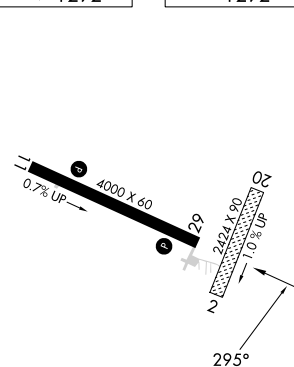
AWOS-3P
118.975

MINNEAPOLIS CENTER
128.6 363.0

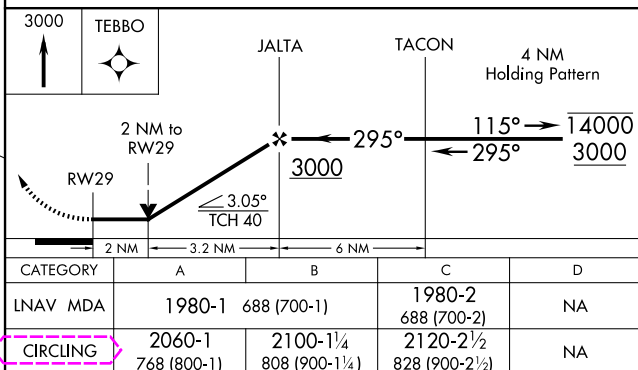
CTAF
122.9



ELEV 1292 TDZE 1292



REIL Rwy 11 and 29
MIRL Rwy 11-29



VIROQUA, WISCONSIN
Orig-C 26MAR20

43°35'N-90°54'W

VIROQUA MUNI (Y51)
RNAV (GPS) RWY 29

EC-3, 07 AUG 2025 to 04 SEP 2025