

VIROQUA, WISCONSIN


AL-10182 (FAA)


24025

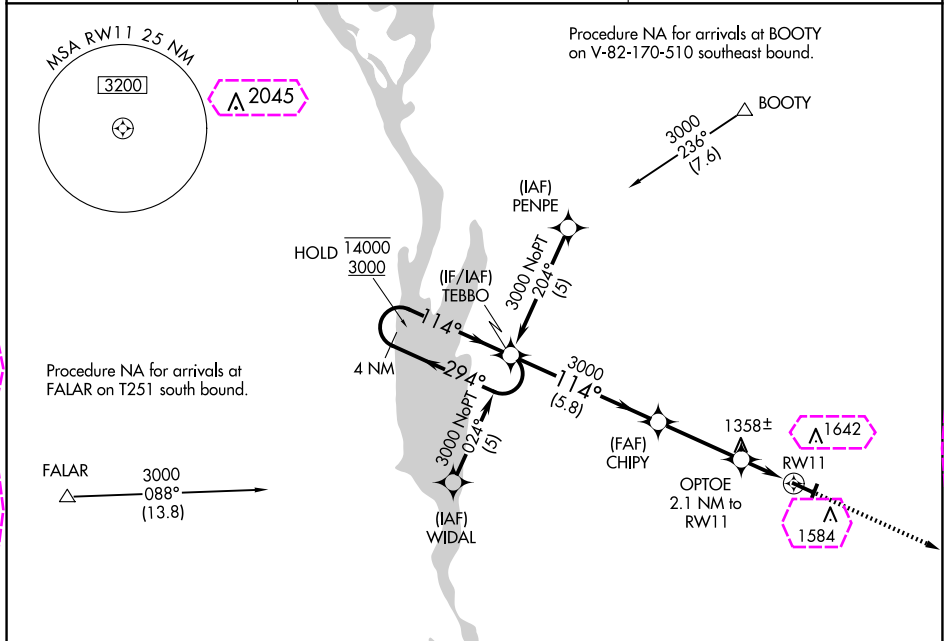
APP CRS	Rwy Idg	4000
114°	TDZE	1284
	Apt Elev	1292


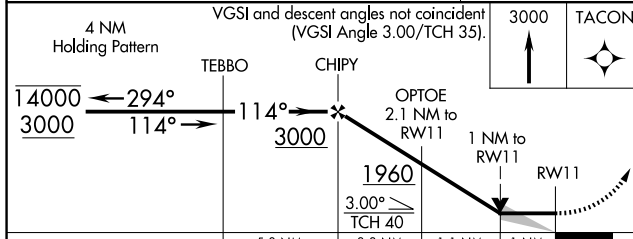

# RNAV (GPS) RWY 11

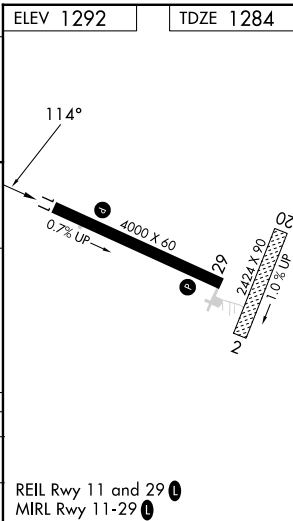
VIROQUA MUNI (Y51)

RNP APCH.	MISSED APPROACH: Climb to 3000 direct TACON and hold.
 Circling NA to Rwy 2 and 20.	

AWOS-3P 118.975	MINNEAPOLIS CENTER 128.6 363.0	CTAF 122.9 
--------------------	-----------------------------------	---



ELEV 1292		TDZE 1284	
<div>MISSED APCH FIX </div>			
VGS1 and descent angles not coincident (VGS1 Angle 3.00/TCH 35).			
4 NM Holding Pattern			
			
TEBBO 14000 3000 294° 114°			
CHIPY 3000 1960 3.00° TCH 40			
OPTOE 2.1 NM to RW11 1 NM to RW11			
5.8 NM 3.3 NM 1.1 NM 1 NM			
CATEGORY	A	B	C D
RNAV MDA	1620-1	336 (400-1)	NA
 CIRCLING	1900-1 608 (700-1)	1960-1 668 (700-1)	NA



114°

0.7% Up

4000 X 60

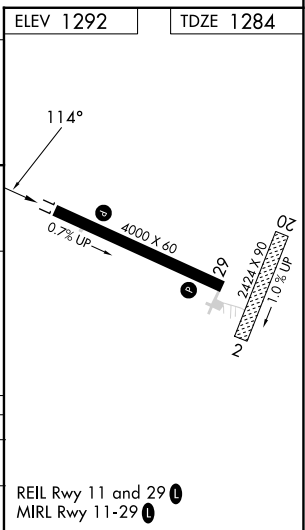
29

20

2424 X 30

1.0% Up

REIL Rwy 11 and 29  
MIRL Rwy 11-29



VIROQUA, WISCONSIN  
Orig 27JAN22



43°35'N-90°54'W

# RNAV (GPS) RWY 11

VIROQUA MUNI (Y51)

EC-3, 10 JUL 2025 to 07 AUG 2025

EC-3, 10 JUL 2025 to 07 AUG 2025

REIL Rwy 11 and 29   
MIRL Rwy 11-29 

VIROQUA, WISCONSIN


AL-10182 (FAA)


25219

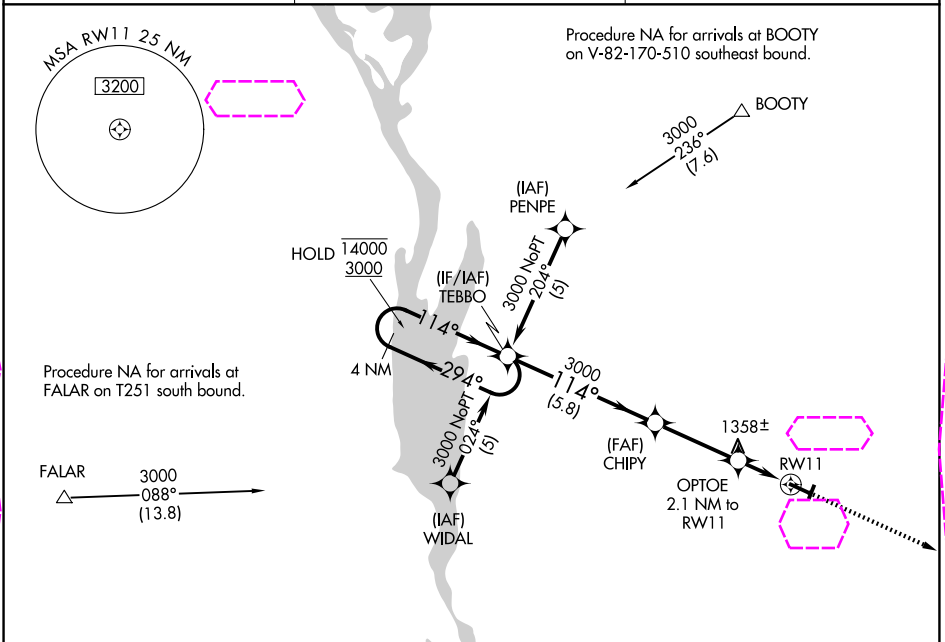
APP CRS	Rwy Ldg	4000
114°	TDZE	1284
	Apt Elev	1292



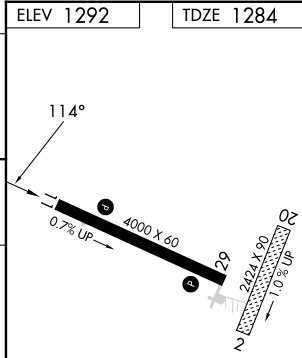


# RNAV (GPS) RWY 11

VIROQUA MUNI (Y51)

RNP APCH.	MISSED APPROACH: Climb to 3000 direct TACON and hold.
 Circling NA to Rwy 2 and 20.	

AWOS-3P 118.975	MINNEAPOLIS CENTER 128.6 363.0	CTAF 122.9 
--------------------	-----------------------------------	---



<div>ELEV 1292</div> <div>TDZE 1284</div>			
<div>MISSED APCH FIX</div> <div></div>			
<div>VGS1 and descent angles not coincident (VGS1 Angle 3.00/TCH 35).</div> <div><div>4 NM Holding Pattern</div><div><div>TEBBO</div><div>CHIPY</div><div>OPTOE 2.1 NM to RW11</div><div>1960 3.00° TCH 40</div><div>5.8 NM 3.3 NM 1.1 NM 1 NM</div></div></div>			
<div>3000 TACON</div> <div></div>			
<div></div>			
<div>REIL Rwy 11 and 29 </div> <div>MIRL Rwy 11-29 </div>			

VIROQUA, WISCONSIN  
Orig 27JAN22

43°35'N-90°54'W

# RNAV (GPS) RWY 11

VIROQUA MUNI (Y51)