

PILOT POINT, ALASKA

AL-10169 (FAA)

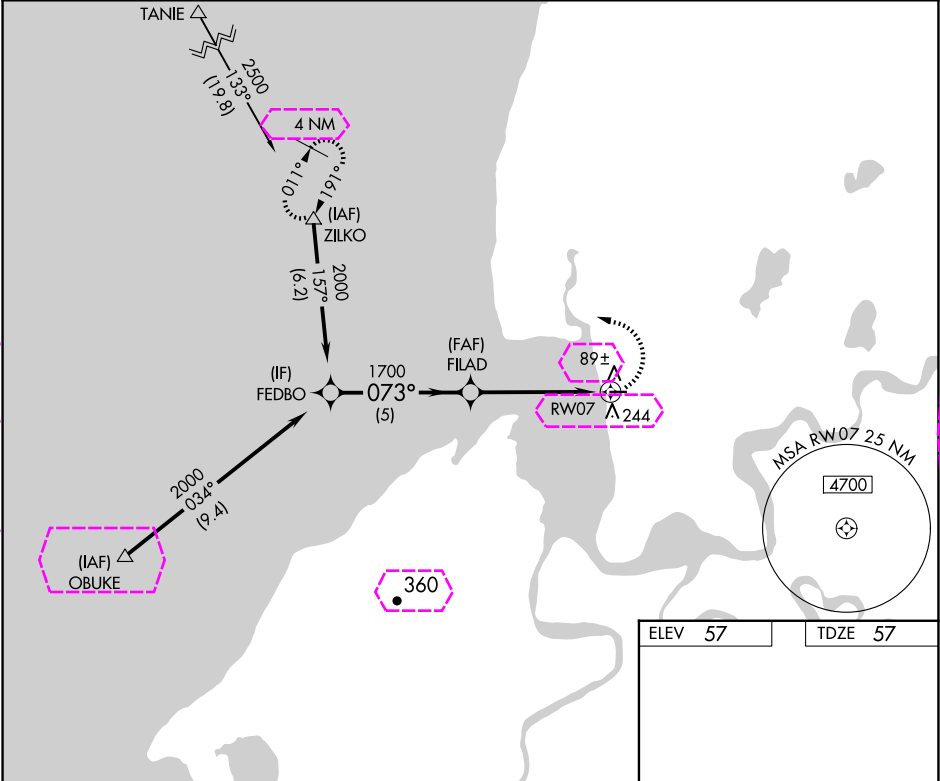
20198

APP CRS 073°	Rwy Idg TDZE Apt Elev	3280 57 57
------------------------	-----------------------------	---------------------------------------

RNAV (GPS) RWY 7
PILOT POINT (PNP)(PAPN)

⚠ DME/DME RNP-0.3 NA. When local altimeter setting not received, use King Salmon altimeter setting and increase all MDA 180 feet.	MISSED APPROACH: Climbing left turn to 2500 direct ZILKO and hold.
--	--

AWOS-3P 118.375	ANCHORAGE CENTER 132.9 288.3	CTAF 122.9 0
---------------------------	--	------------------------



Visual Segment - Obstacles.				2500	ZILKO	073° to RWY07
						0.6% UP → 3280 X 75
CATEGORY	A	B	C	D		
LNAV MDA	520-1	463 (500-1)	NA			
CIRCLING	600-1	543 (600-1)	NA			

PILOT POINT, ALASKA
Orig-C 12OCT17

57°35'N-157°34'W

PILOT POINT (PNP)(PAPN)
RNAV (GPS) RWY 7

PILOT POINT, ALASKA

AL-10169 (FAA)

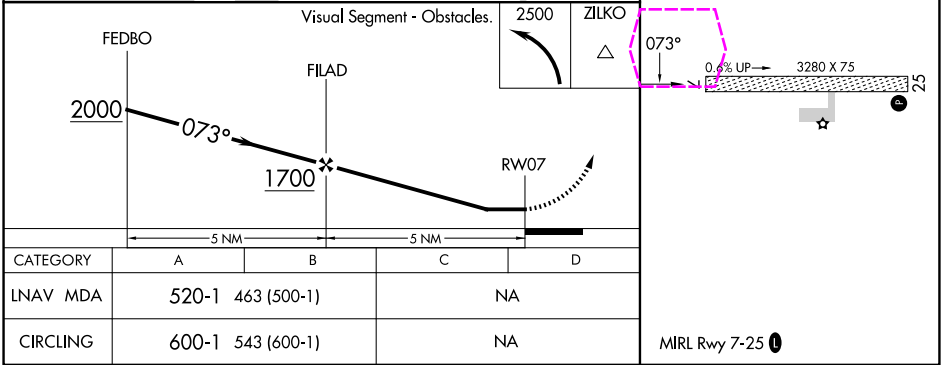
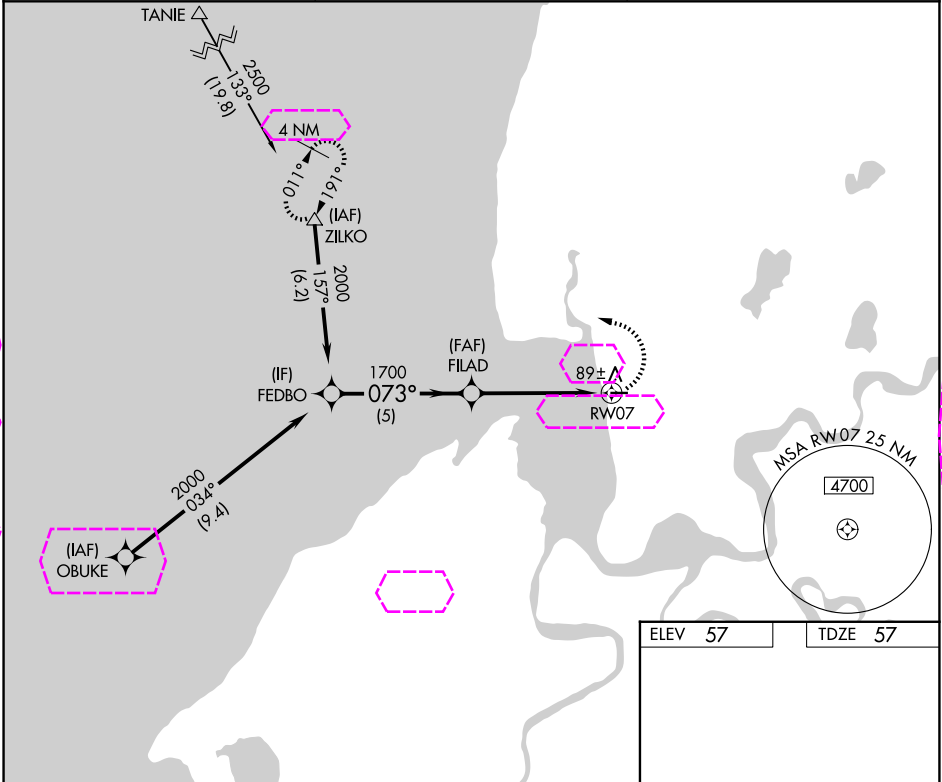
25219

APP CRS 073°	Rwy Ldg TDZE Apt Elev	3280 57 57
-----------------	-----------------------------	------------------

RNAV (GPS) RWY 7
PILOT POINT (PNP)(PAPN)

<p>⚠ DME/DME RNP-0.3 NA. When local altimeter setting not received, use King Salmon altimeter setting and increase all MDA 180 feet.</p>	<p>MISSED APPROACH: Climbing left turn to 2500 direct ZILKO and hold.</p>
--	---

AWOS-3P 118.375	ANCHORAGE CENTER 132.9 288.3	CTAF 122.9 0
--------------------	---------------------------------	-----------------



PILOT POINT, ALASKA
Orig-C 12OCT17

57°35'N-157°34'W

PILOT POINT (PNP)(PAPN)
RNAV (GPS) RWY 7