

PILOT POINT, ALASKA

AL-10169 (FAA)

20198

APP CRS	Rwy Idg	3280
253°	TDZE	57
	Apt Elev	57

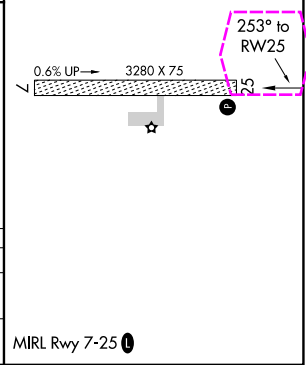
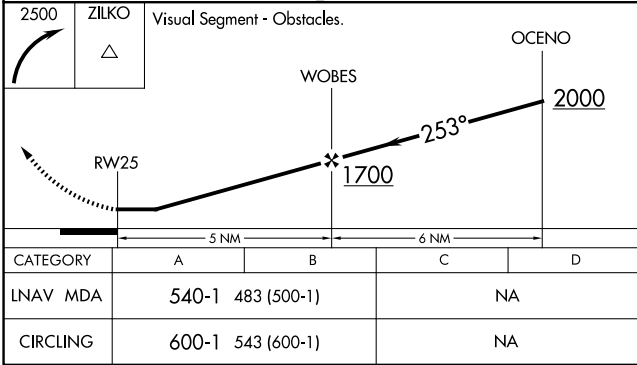
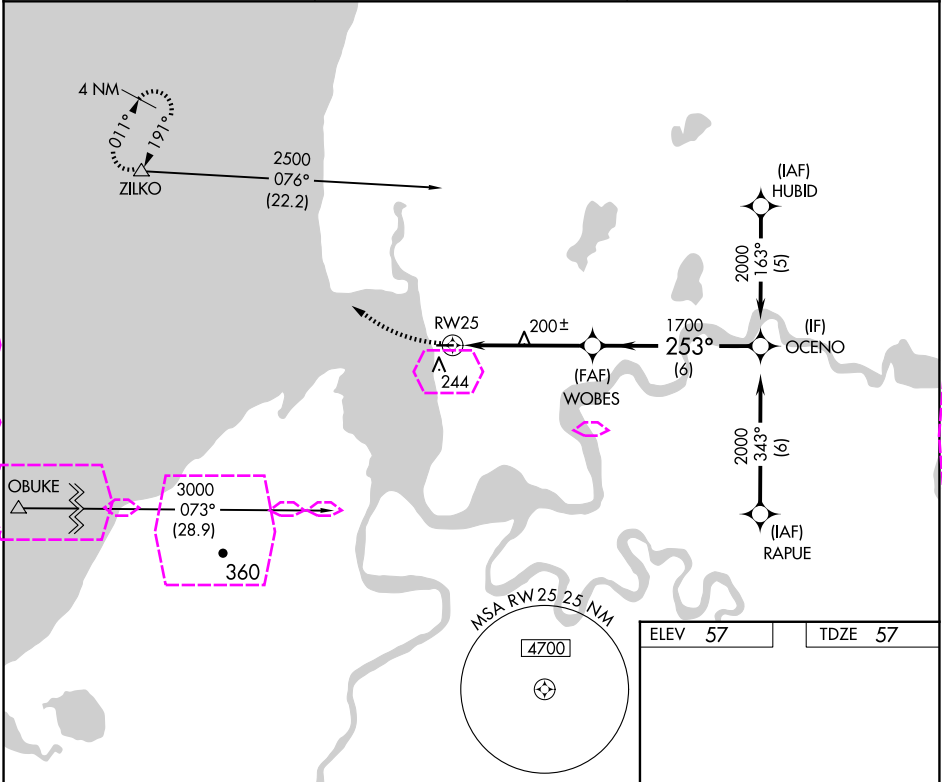
RNAV (GPS) RWY 25

PILOT POINT (PNP)(PAPN)

⚠ DME/DME RNP-0.3 NA. When local altimeter setting not received, use King Salmon altimeter setting and increase all MDA 180 feet.

MISSED APPROACH: Climbing right turn to 2500 direct ZILKO and hold.

AWOS-3P 118.375	ANCHORAGE CENTER 132.9 288.3	CTAF 122.9 0
---------------------------	--	------------------------



AK, 12 JUN 2025 to 07 AUG 2025

AK, 12 JUN 2025 to 07 AUG 2025

PILOT POINT, ALASKA

AL-10169 (FAA)

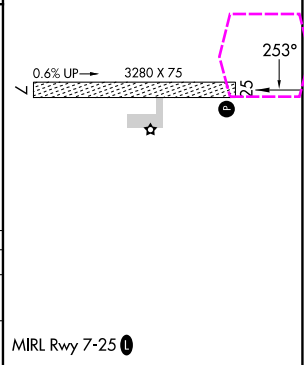
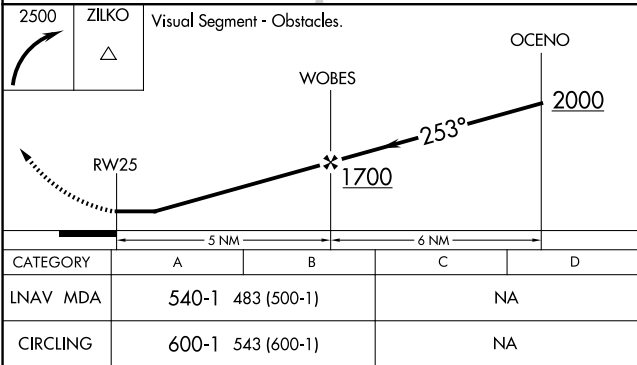
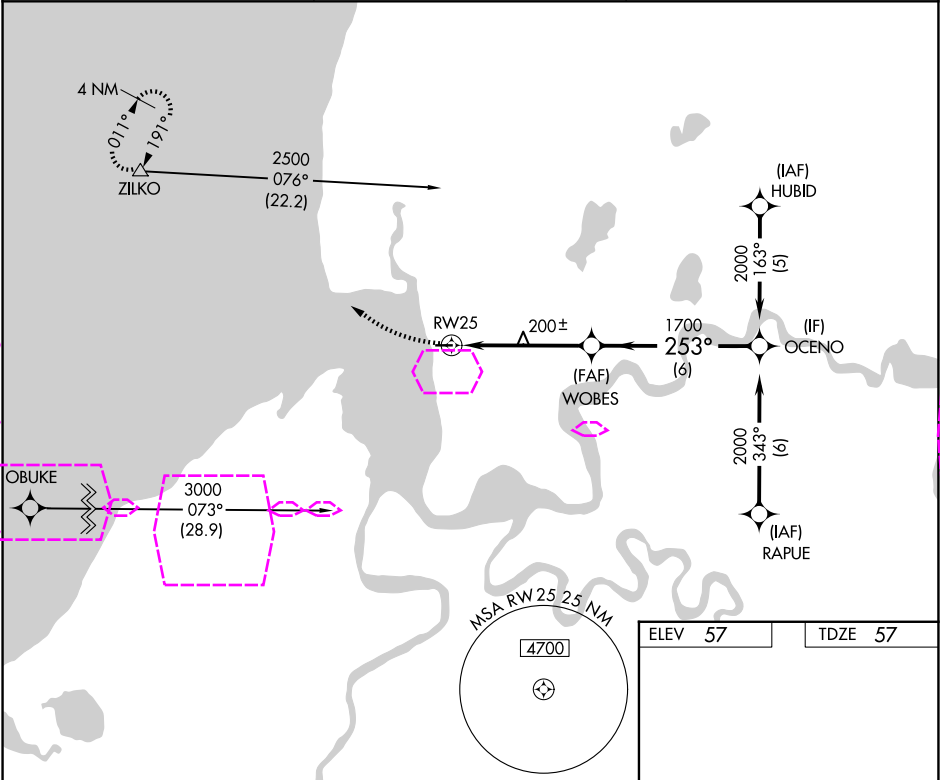
25219

APP CRS	Rwy Ldg	3280
253°	TDZE	57
	Apt Elev	57

RNAV (GPS) RWY 25
PILOT POINT (PNP)(PAPN)

<p>⚠ DME/DME RNP-0.3 NA. When local altimeter setting not received, use King Salmon altimeter setting and increase all MDA 180 feet.</p>	<p>MISSED APPROACH: Climbing right turn to 2500 direct ZILKO and hold.</p>
---	--

AWOS-3P 118.375	ANCHORAGE CENTER 132.9 288.3	CTAF 122.9 0
--------------------	---------------------------------	-----------------



PILOT POINT, ALASKA
Orig-C 12OCT17

57°35'N-157°34'W

PILOT POINT (PNP)(PAPN)
RNAV (GPS) RWY 25

AK, 07 AUG 2025 to 02 OCT 2025

AK, 07 AUG 2025 to 02 OCT 2025