

HAVERHILL, NEW HAMPSHIRE

AL-10136 (FAA)

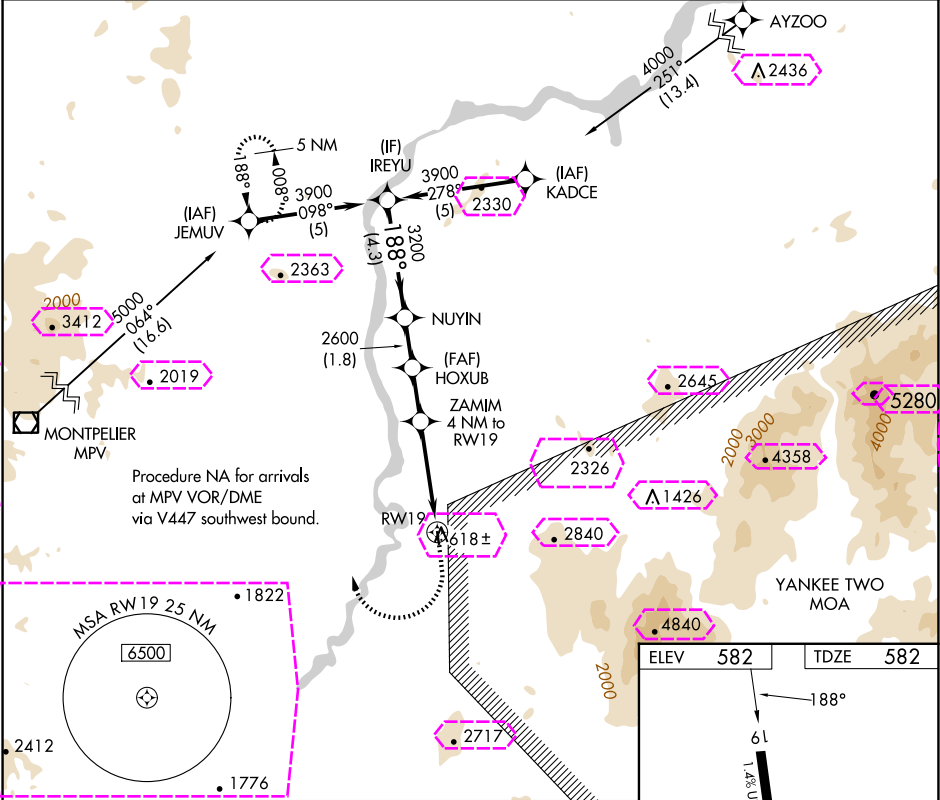
25107

APP CRS	Rwy Idg	2511
188°	TDZE	582
	Apt Elev	582

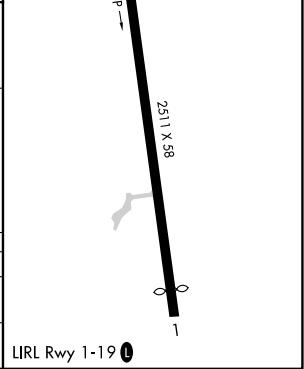
RNAV (GPS) RWY 19

DEAN MEML (5B9)

<p>NA</p> <p>28°C</p>	<p>DME/DME RNP-0.3 NA. Procedure NA at night. Visibility reduction by helicopters NA. Use Lebanon altimeter setting; if not received, use Barre-Montpelier, VT altimeter setting and increase all MDAs 80 feet.</p>	<p>MISSED APPROACH: Climbing right turn to 4000 direct JEMUV and hold.</p>
<p>LEB ASOS</p> <p>118.65</p>	<p>BOSTON CENTER</p> <p>135.7 282.2</p>	<p>UNICOM</p> <p>122.8 (CTAF) 0</p>



	IREYU	NUYIN	HOXUB	ZAMIM 4 NM to RWY 19	RWY 19
	3900	3200	2600	2020	
Procedure Turn NA	188°			3.38° TCH 40	
	4.3 NM	1.8 NM	1.9 NM	4 NM	
CATEGORY	A	B	C	D	
LNAV MDA	1820-1¼ 1238 (1300-1¼)	1820-1½ 1238 (1300-1½)	NA	NA	
CIRCLING	1820-1¼ 1238 (1300-1¼)	2180-1½ 1598 (1600-1½)	NA	NA	



HAVERHILL, NEW HAMPSHIRE

AL-10136 (FAA)

25219

APP CRS	Rwy Ldg	2511
188°	TDZE	582
	Apt Elev	582

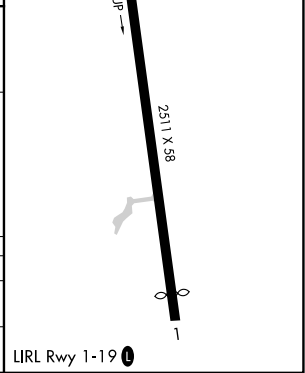
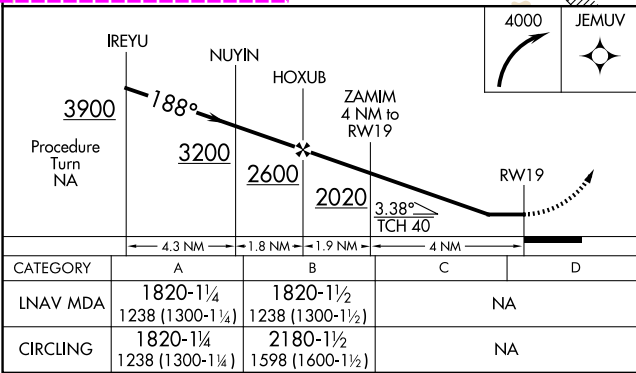
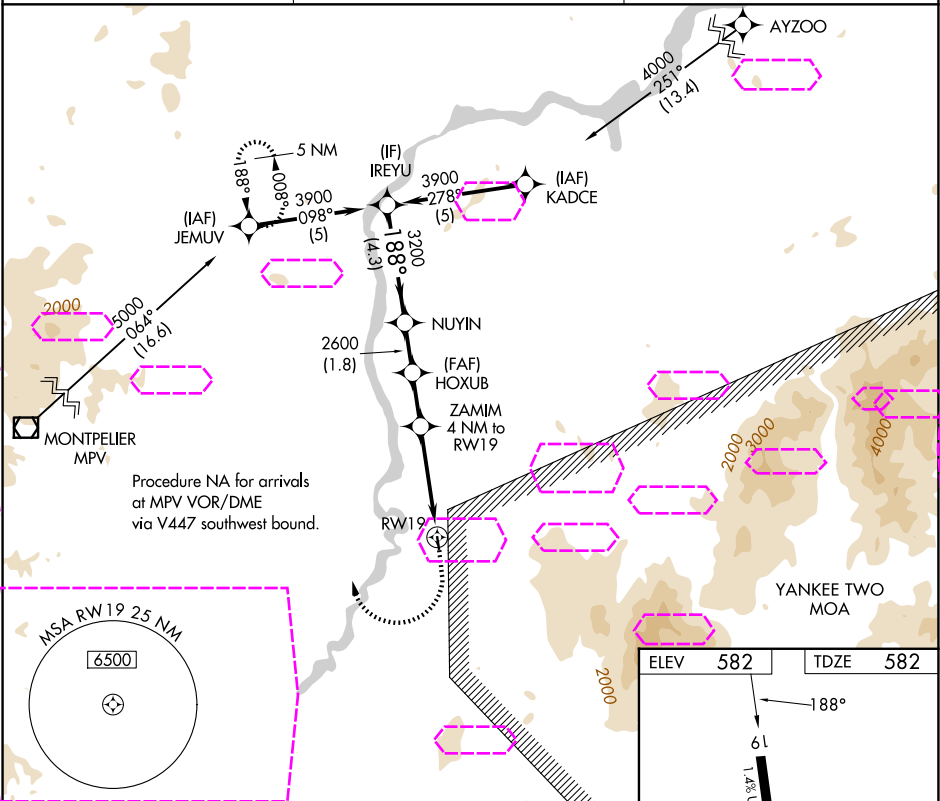
RNAV (GPS) RWY 19

DEAN MEML (5B9)

NA 27°C DME/DME RNP-0.3 NA. Procedure NA at night. Visibility reduction by helicopters NA. Use Lebanon altimeter setting; if not received, use Barre-Montpelier, VT altimeter setting and increase all MDAs 80 feet.

MISSED APPROACH: Climbing right turn to 4000 direct JEMUV and hold.

LEB ASOS 118.65	BOSTON CENTER 135.7 282.2	UNICOM 122.8 (CTAF) 0
--------------------	------------------------------	--------------------------



NE-1, 07 AUG 2025 to 04 SEP 2025

NE-1, 07 AUG 2025 to 04 SEP 2025