

RNP APCH-GPS.

⚠

NA

⚠

22°C

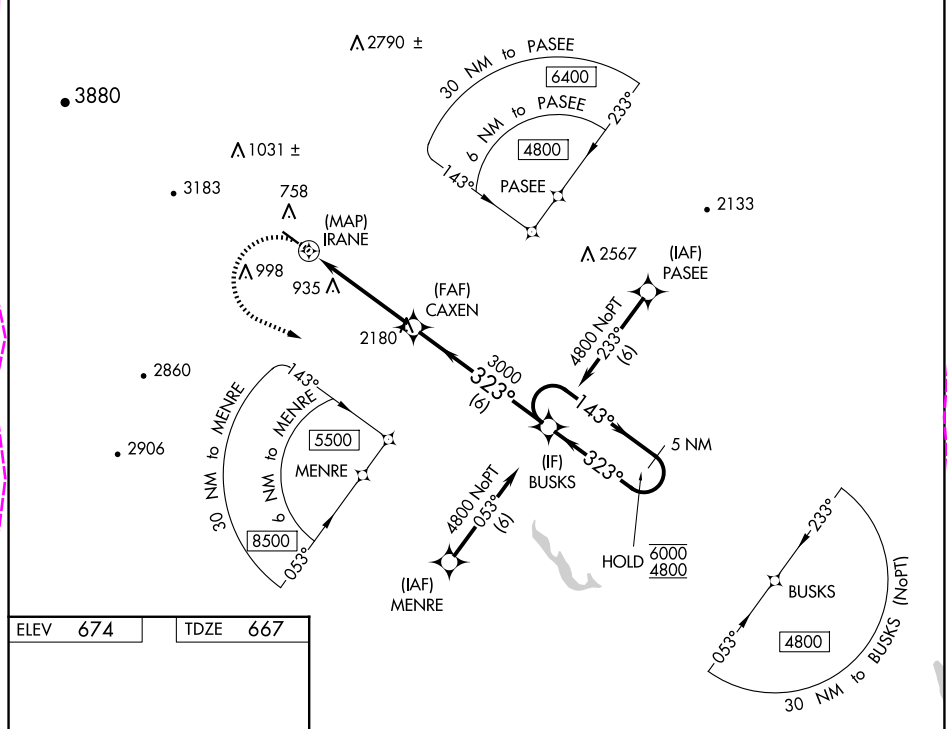
Circling Rwy 14 NA at night. Rwy 32 helicopter visibility reduction below $\frac{3}{4}$ SM NA. When local altimeter setting not received, use Augusta altimeter setting and increase all MDA's 160 feet. Caution any go-around after passing IRANE, may not provide standard obstacle clearance. VDP NA when using Augusta State altimeter setting.

MISSED APPROACH: Climbing left turn to 4800 direct BUSKS and hold, continue climb-in-hold to 4800.

AWOS-AV
119.075

PORTLAND APP CON★
125.5 269.35

CTAF
122.90



ELEV 674

TDZE 667

14

3818 X 75

0.5% UP

323°

4800

BUSKS

5 NM

Holding Pattern

IRANE

1.8 NM to IRANE

CAXEN

BUSKS

143°

323°

6000

4800

3000

4.20°

TCH 50

0.5

1.8 NM

2.8 NM

6 NM

CATEGORY	A	B	C	D
LNAV MDA	1740-1¼ 1073 (1100-1¼)	1740-1½ 1073 (1100-1½)	NA	
CIRCLING	1740-1¼ 1066 (1100-1¼)	2260-1½ 1586 (1600-1½)	NA	

MIRL Rwy 14-32

REIL Rwy 32

RNP APCH - GPS.

▼

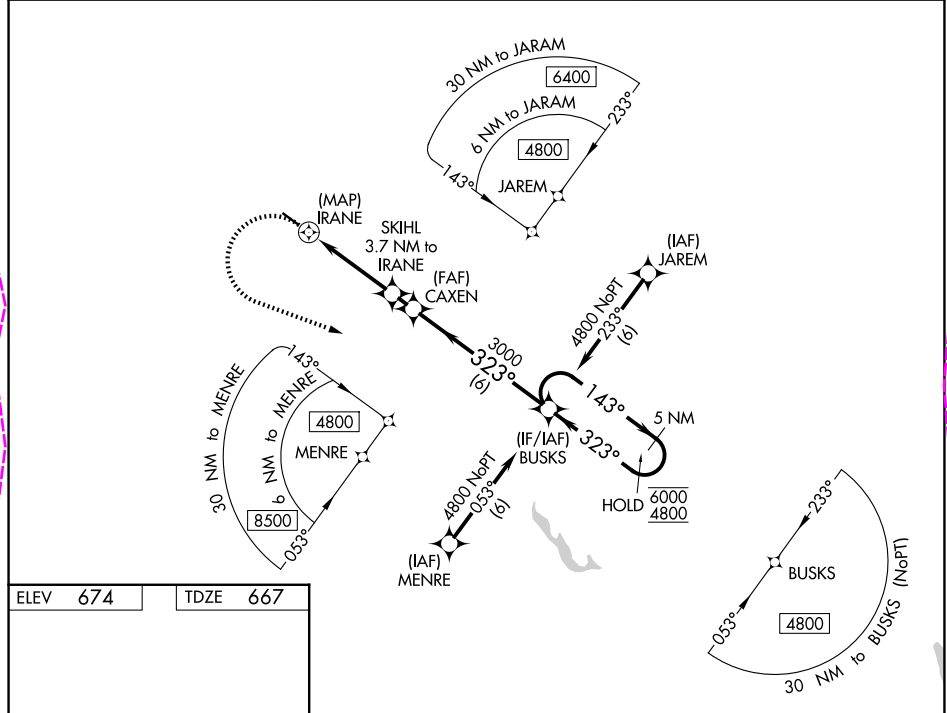
▲ NA

❄ -22°C

Rwy 32 helicopter visibility reduction below ¾ SM NA. Circling Rwy 14 NA at night. VDP NA when using AUG altimeter setting. When local altimeter setting not received, use AUG altimeter setting and increase all MDAs 160 feet. Caution any go-around after passing IRANE, may not provide standard obstacle clearance.

MISSED APPROACH: Climbing left turn to 4800 direct BUSKS and hold, continue climb-in-hold to 4800.

AWOS-AV 119.075	PORTLAND APP CON ★ 125.5 269.35	CTAF 122.9 0
--------------------	------------------------------------	-----------------



ELEV 674

TDZE 667

3818 X 75

0.5% UP

323°

4800

BUSKS

5 NM Holding Pattern

IRANE

1.8 NM to IRANE

SKIHL 3.7 NM to IRANE

CAXEN

BUSKS

143°

323°

6000

4800

0.5

1.8 NM

1.9 NM

0.9 NM

6 NM

CATEGORY	A	B	C	D
LNAV MDA	1740-1½	1073 (1100-1½)	NA	
CIRCLING	1740-1½ 1066 (1100-1½)	2340-1½ 1666 (1700-1½)	NA	

MIRL Rwy 14-32 0
REIL Rwy 32 0