

RNAV (GPS) RWY 2

RNAV (GPS) RWY 2
ROBERTSON FLD (4B8)

WAAS CH 65737 W02A	APP CRS 019°	Rwy Ldg 3665 TDZE 201 Apt Elev 202
--	------------------------	---

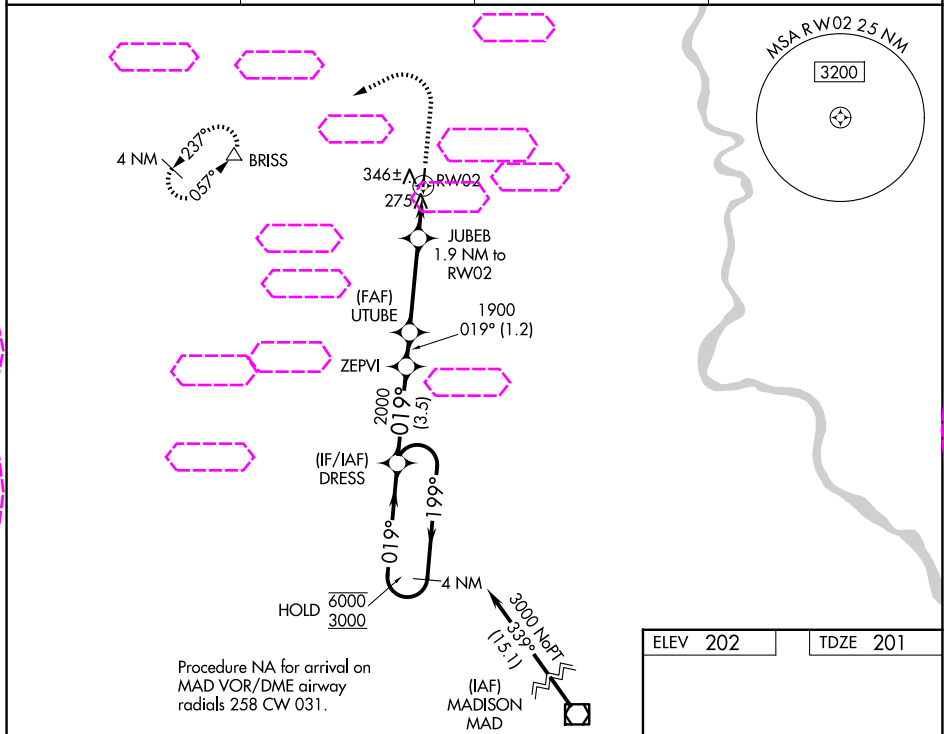
RNP APCH - GPS.



Rwy 2 helicopter visibility reduction below 1 SM NA.
Circling NA east of Rwy 2-20. Circling Rwy 20 NA at night.

MISSED APPROACH: Climb to 1900 then climbing left turn to 3000 direct BRISS and hold.

AWOS-3PT 119.175	YANKEE APP CON 123.95 290.55	CLNC DEL 134.5	UNICOM 122.8 (CTAF) ①
----------------------------	--	--------------------------	---------------------------------



4 NM Holding Pattern

6000 ← 199°

3000 → 019°

DRESS

ZEPVI

UTUBE

JUBEB

1.9 NM to RW02

3.10° TCH 30

RW02

1900

3000

BRIS

3.5 NM

1.2 NM

3.4 NM

1.9 NM

CATEGORY	A	B	C	D
LP MDA	540-1 339 (400-1)			NA
LNAV MDA	640-1	439 (500-1)	640-1 $\frac{1}{4}$ 439 (500-1 $\frac{1}{4}$)	NA
CIRCLING	840-1	638 (700-1)	960-2 $\frac{1}{4}$ 758 (800-2 $\frac{1}{4}$)	NA

