

SYLVA, NORTH CAROLINA

AL-9825 (FAA)

24305

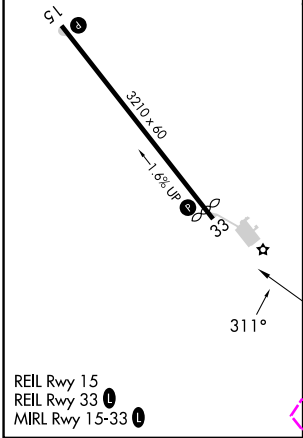
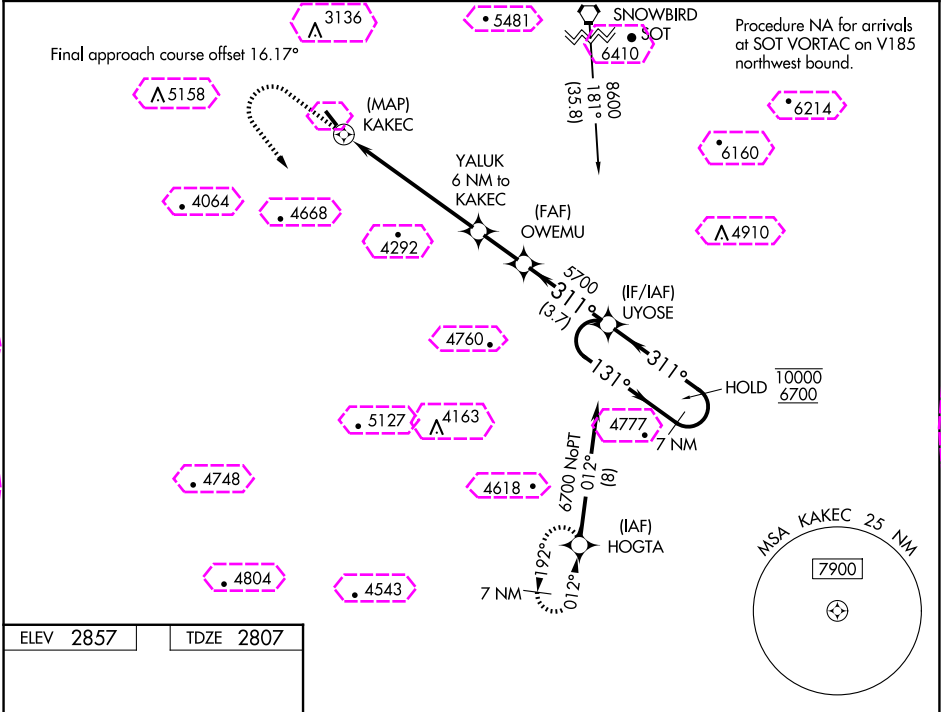
APP CRS	Rwy Idg	3060
311°	TDZE	2807
	Apt Elev	2857




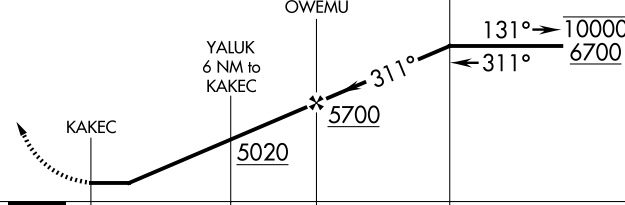

# RNAV (GPS) RWY 33

JACKSON COUNTY (24A)

RNP APCH	MISSED APPROACH: Climb to 5000 then climbing left turn to 8000 direct HOGTA and hold.
Procedure NA at night. Rwy 33 helicopter visibility reduction below 1 SM NA. -14°C	

AWOS-3PT 118.9	ATLANTA CENTER 134.8 379.95	UNICOM 123.0 (CTAF) 0
-------------------	--------------------------------	--------------------------



5000	8000	HOGTA	Visual segment - Obstacles.			
						
			OWEMU	UYOSE	7 NM Holding Pattern	
			YALUK 6 NM to KAKEC		131° → 10000 ← 311° 6700	
						
			5020	5700		
			0.5	6 NM	2 NM	3.7 NM
CATEGORY	A		B		C	D
LNAV MDA	4360-1¼ 1553 (1600-1¼)		4360-1½ 1553 (1600-1½)		NA	
 CIRCLING	4360-1¼ 1503 (1600-1¼)		4520-1½ 1663 (1700-1½)		NA	

SYLVA, NORTH CAROLINA

Amdt 1 05DEC19

35°19'N-83°13'W

JACKSON COUNTY (24A)

# RNAV (GPS) RWY 33

SYLVA, NORTH CAROLINA

AL-9825 (FAA)

25219

APP CRS	Rwy Ldg	3060
311°	TDZE	2807
	Apt Elev	2857

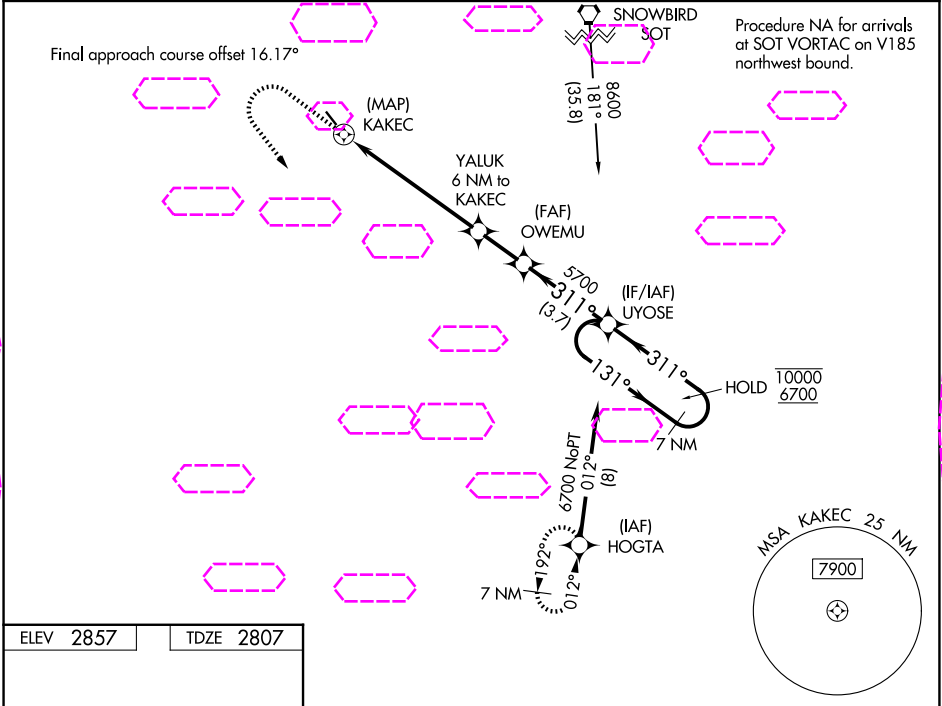
# RNAV (GPS) RWY 33

JACKSON COUNTY (24A)

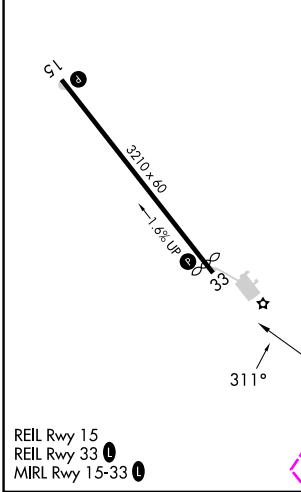
RNP APCH  
Procedure NA at night.  
Rwy 33 helicopter visibility reduction below 1 SM NA.  
-13°C




MISSED APPROACH: Climb to 5000 then climbing left turn to 8000 direct HOGTA and hold.

AWOS-3PT 118.9	ATLANTA CENTER 134.8 379.95	UNICOM 123.0 (CTAF) 0
-------------------	--------------------------------	--------------------------



ELEV 2857	TDZE 2807
-----------	-----------



5000	8000	HOGTA	Visual segment - Obstacles.			
						
			UYOSE 7 NM Holding Pattern			
			131° → 10000 ← 311° 6700			
			OWEMU			
			YALUK 6 NM to KAKEC			
			KAKEC			
			5020			
			5700			
			0.5 6 NM 2 NM 3.7 NM			
CATEGORY	A		B		C	D
LNAV MDA	4360-1¼ 1553 (1600-1¼)		4360-1½ 1553 (1600-1½)		NA	
CIRCLING	4360-1¼ 1503 (1600-1¼)		4520-1½ 1663 (1700-1½)		NA	

SYLVA, NORTH CAROLINA

Amdt 1 05DEC19

35°19'N-83°13'W

JACKSON COUNTY (24A)

# RNAV (GPS) RWY 33

SE-2, 07 AUG 2025 to 04 SEP 2025

SE-2, 07 AUG 2025 to 04 SEP 2025