

ELIZABETHTON, TENNESSEE

AL-9816 (FAA)

25107

APP CRS	Rwy Idg	4904
064°	TDZE	1575
	Apt Elev	1593

RNAV (GPS) RWY 6

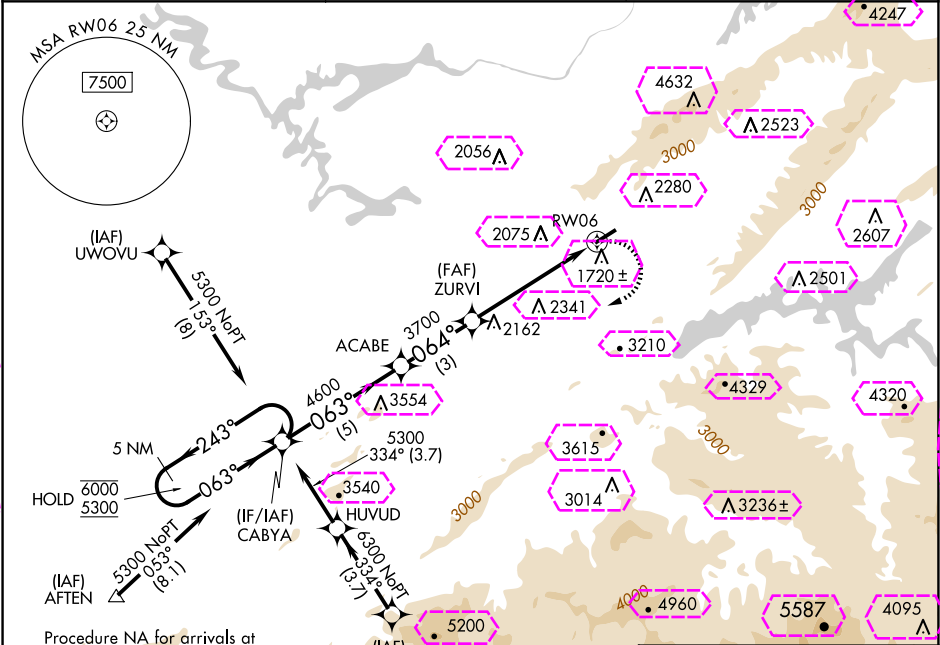
ELIZABETHTON MUNI (ØA9)

RNP APCH - GPS.

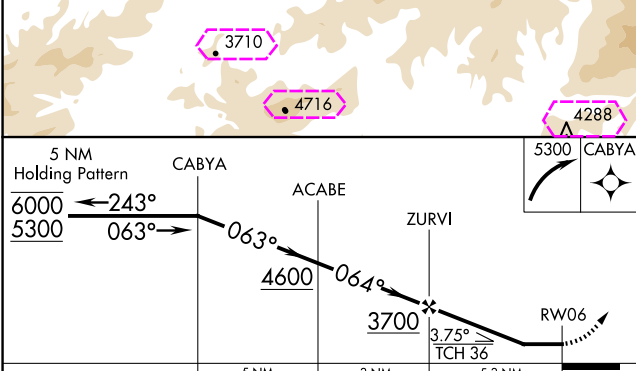
Circling NA northwest of Rwy 6-24. Procedure NA at night.
 Rwy 6 helicopter visibility reduction below 1 SM NA.

MISSED APPROACH: (Do not exceed 200K until CABYA)
Climbing right turn to 5300 direct CABYA and hold.

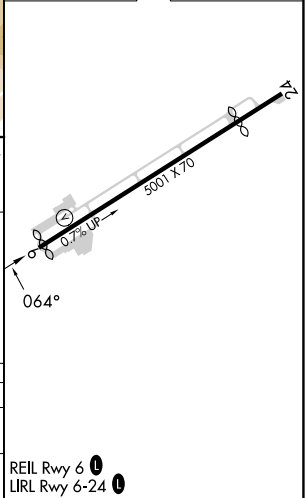
AWOS-3PT 135.675	TRI CITY APP CON ★ 134.425 349.0	UNICOM 123.0 (CTAF) 0
---------------------	-------------------------------------	--------------------------



ELEV 1593 TDZE 1575



CATEGORY	A	B	C	D
LNNAV MDA	3080-1¼ 1505 (1500-1¼)	3160-1½ 1585 (1600-1½)	3260-3 1685 (1700-3)	NA
CIRCLING	3080-1¼ 1487 (1500-1¼)	3160-1½ 1567 (1600-1½)	3260-3 1667 (1700-3)	NA



ELIZABETHTON, TENNESSEE
Amdt 1 24MAR22

36°22'N-82°10'W

RNAV (GPS) RWY 6

ELIZABETHTON MUNI (ØA9)

ELIZABETHTON, TENNESSEE

AL-9816 (FAA)

25219

APP CRS	Rwy Ldg	4904
064°	TDZE	1575
	Apt Elev	1593

RNAV (GPS) RWY 6

ELIZABETHTON MUNI (ØA9)

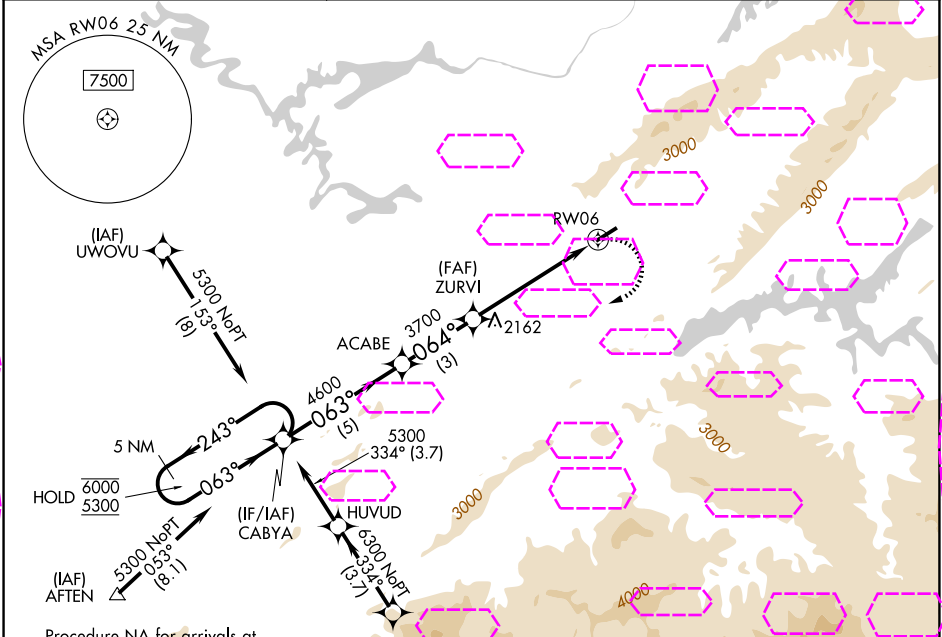
RNP APCH - GPS.

Circling NA northwest of Rwy 6-24. Procedure NA at night. Rwy 6 helicopter visibility reduction below 1 SM NA.

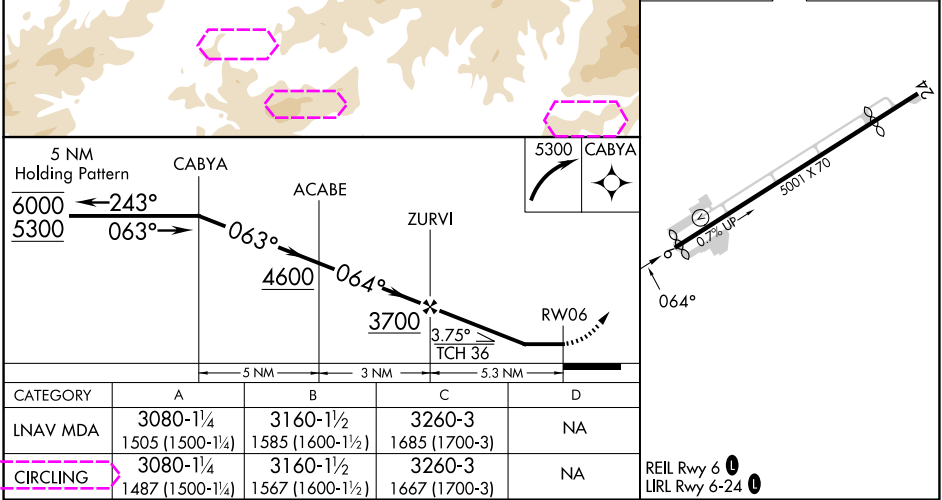
10°C

MISSED APPROACH: (Do not exceed 200K until CABYA)
Climbing right turn to 5300
direct CABYA and hold.

AWOS-3PT 135.675	TRI CITY APP CON ★ 134.425 349.0	UNICOM 123.0 (CTAF) 0
---------------------	-------------------------------------	--------------------------



ELEV 1593 TDZE 1575



ELIZABETHTON, TENNESSEE
Amdt 1 24MAR22

36°22'N-82°10'W

ELIZABETHTON MUNI (ØA9)
RNAV (GPS) RWY 6