

MOUNTAIN CITY, TENNESSEE

AL-9815 (FAA)

25107

APP CRS	Rwy Idg	4498
065°	TDZE	2240
	Apt Elev	2241

RNAV (GPS) RWY 7

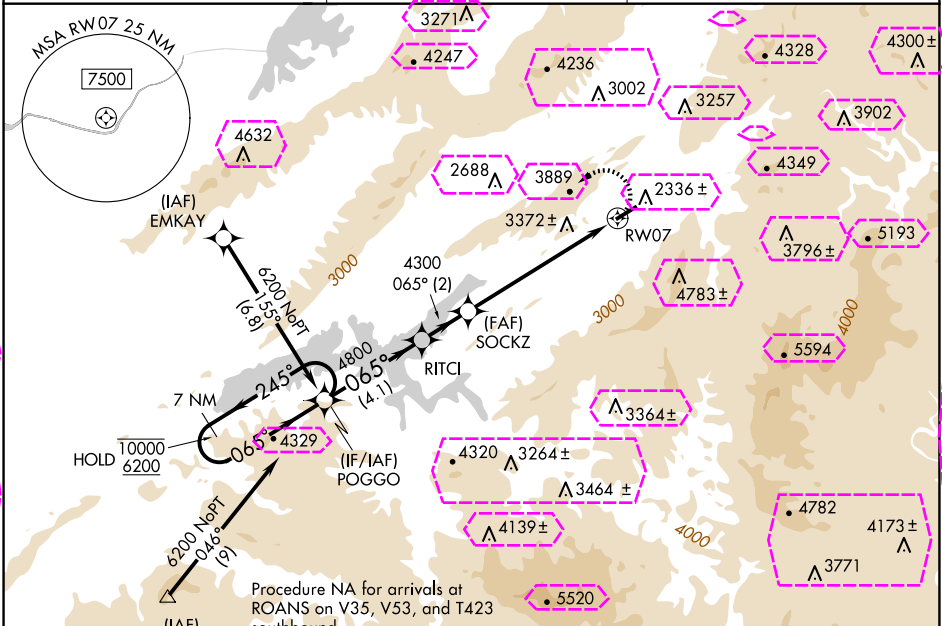
JOHNSON COUNTY (6A.4)

RNP APCH - GPS

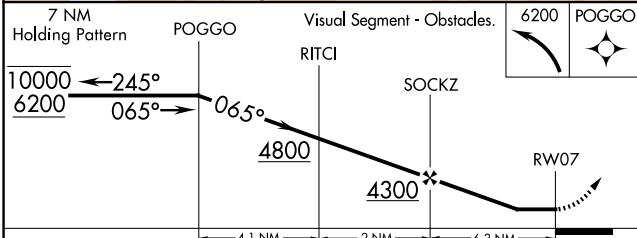
▼ Rwy 7 helicopter visibility reduction below 1 SM NA. Circling NA for Cat C south of Rwy 7-25. When local altimeter setting not received, use Abingdon altimeter setting and increase all MDAs 80 feet. Circling NA for Cats B and C when using Abingdon altimeter setting. Procedure NA at night.

MISSED APPROACH:
Climbing left turn to 6200 direct POGGO and hold.

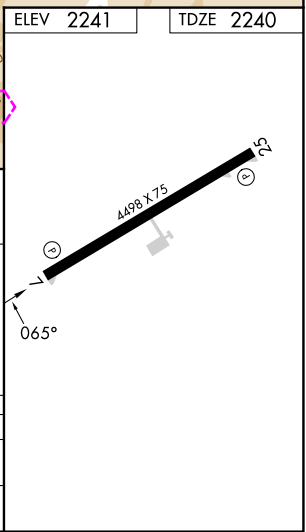
AWOS-3 126.225	TRI-CITY APP CON ★ 134.425 349.0	UNICOM 122.7 (CTAF)
-------------------	-------------------------------------	------------------------



ELEV 2241	TDZE 2240
-----------	-----------



CATEGORY	A	B	C	D
LNNAV MDA	4040-1¼ 1800 (1800-1¼)	4040-1½ 1800 (1800-1½)	4040-3 1800 (1800-3)	
CIRCLING	4040-1¼ 1799 (1800-1¼)	4260-1½ 2019 (2100-1½)	4260-3 2019 (2100-3)	NA



MOUNTAIN CITY, TENNESSEE

Amtd 1 05SEP24

36°25'N-81°50'W

RNAV (GPS) RWY 7

MOUNTAIN CITY, TENNESSEE

AL-9815 (FAA)

25219

APP CRS 065°	Rwy Ldg 4498
	TDZE 2240
	Apt Elev 2241

RNAV (GPS) RWY 7

JOHNSON COUNTY (6A4)

RNP APCH - GPS

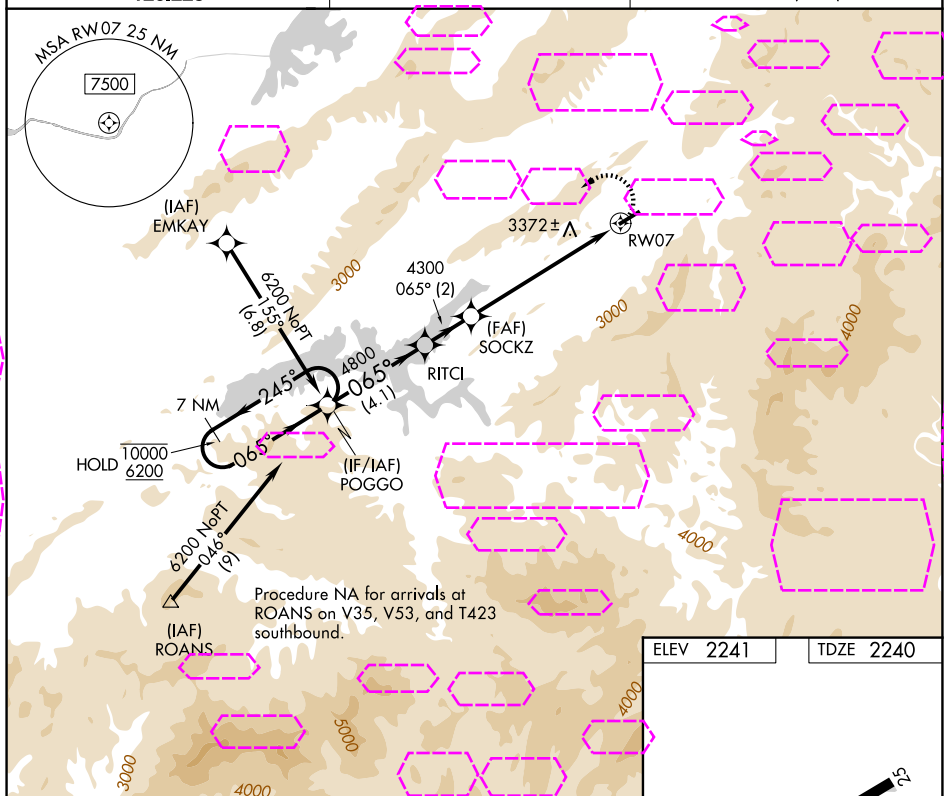
NA
Rwy 7 helicopter visibility reduction below 1 SM NA. Circling NA for Cat C south of Rwy 7-25. When local altimeter setting not received, use Abingdon altimeter setting and increase all MDAs 80 feet. Circling NA for Cats B and C when using Abingdon altimeter setting. Procedure NA at night.

MISSED APPROACH:
Climbing left turn to 6200 direct POGGO and hold.

AWOS-3
126.225

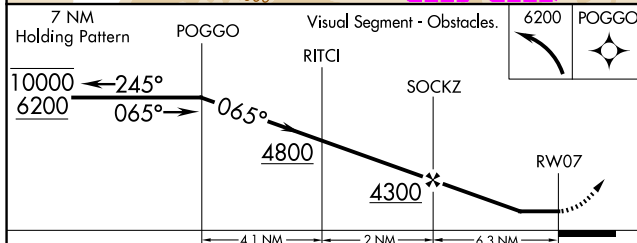
TRI-CITY APP CON ★
134.425 349.0

UNICOM
122.7 (CTAF)



SE-1, 07 AUG 2025 to 04 SEP 2025

SE-1, 07 AUG 2025 to 04 SEP 2025



ELEV 2241	TDZE 2240

CATEGORY	A	B	C	D
LNAV MDA	4040-1¼ 1800 (1800-1¼)	4040-1½ 1800 (1800-1½)	4040-3 1800 (1800-3)	
CIRCLING	4040-1¼ 1799 (1800-1¼)	4260-1½ 2019 (2100-1½)	4260-3 2019 (2100-3)	NA

MOUNTAIN CITY, TENNESSEE

Amtd 1 05SEP24

36°25'N-81°50'W

RNAV (GPS) RWY 7