

APP CRS	Rwy Idg	4498
253°	TDZE	2241
	Apt Elev	2241

RNAV (GPS) RWY 25

JOHNSON COUNTY (6A4)

RNP APCH - GPS.	
-----------------	--

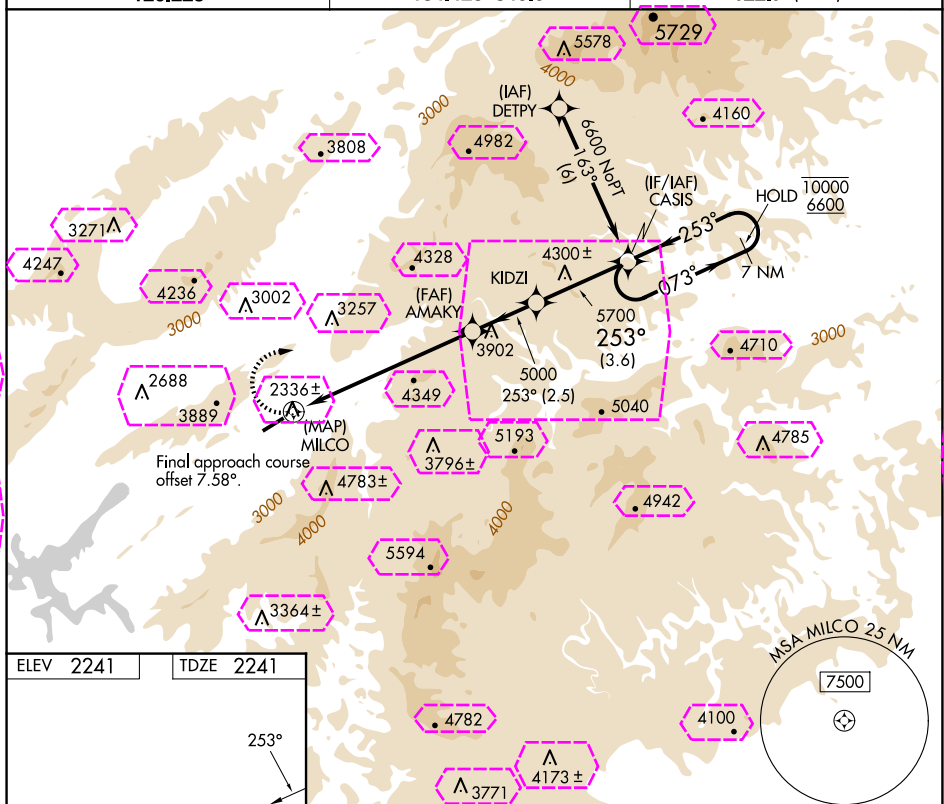
NA Rwy 25 helicopter visibility reduction below 1 SM NA. Circling NA for Cats C and D south of Rwy 7-25. When local altimeter setting not received, use Abingdon altimeter setting and increase all MDAs 80 feet. Procedure NA at night.

MISSED APPROACH:
Climbing right turn to 6600
direct CASIS and hold.

AWOS-3
126.225

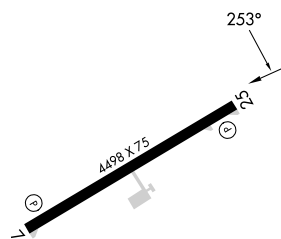
TRI-CITY APP CON ★
134,425 349.0

UNICOM
122.7 (CTAF)

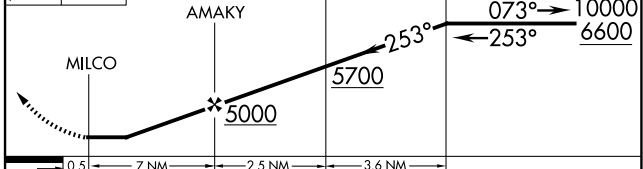


ELEV 2241		TDZE 2241
-----------	--	-----------

TDZE 2241



6600	CASIS	Visual Segment - Obstacles.	CASIS	7 NM Holding Pattern
		KIDZI		



CATEGORY	A	B	C	D
LNAV MDA	4880-1¼ 2639 (2700-1¼)	4880-1½ 2639 (2700-1½)	4880-3	2639 (2700-3)
CIRCLING	4880-1¼ 2639 (2700-1¼)	4880-1½ 2639 (2700-1½)	4880-3	2639 (2700-3)

MOUNTAIN CITY, TENNESSEE

Orig-C 05SEP24

36°25'N-81°50W

JOHNSON COUNTY (6A4)

RNAV (GPS) RWY 25

SE-1, 10 JUL 2025 to 07 AUG 2025

SE-1, 10 JUL 2025 to 07 AUG 2025

MOUNTAIN CITY, TENNESSEE

AL-9815 (FAA)

25219

APP CRS 253°	Rwy Ldg 4498
	TDZE 2241
	Apt Elev 2241

RNAV (GPS) RWY 25

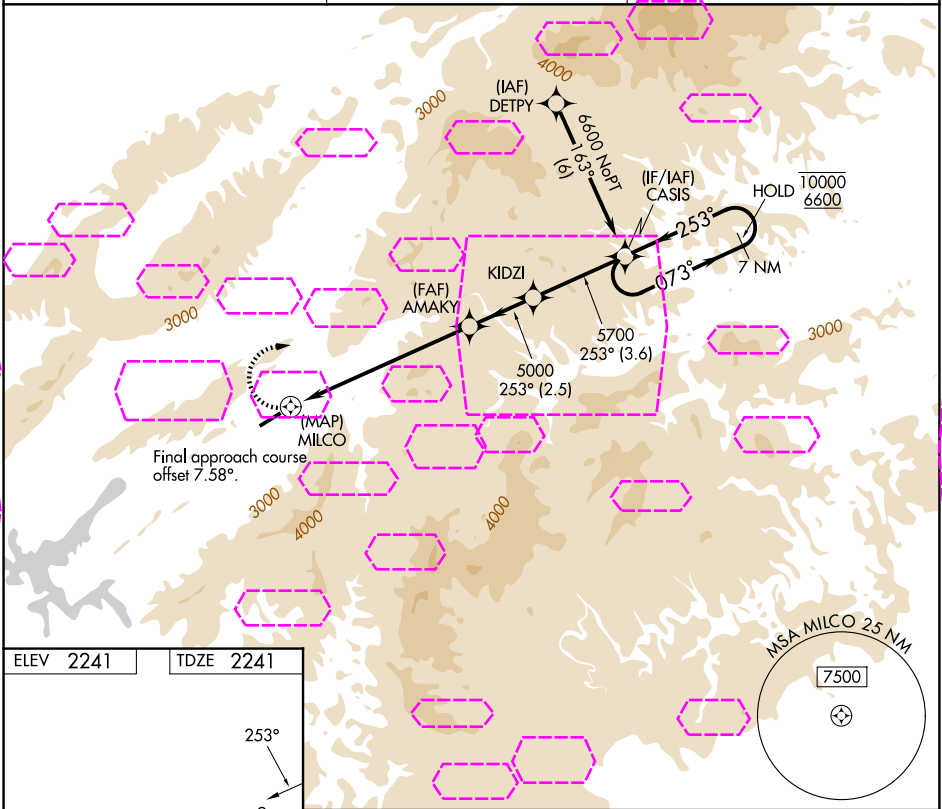
JOHNSON COUNTY (6A4)

RNP APCH - GPS.

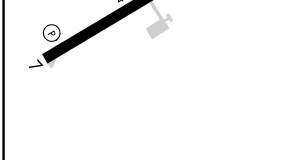
Rwy 25 helicopter visibility reduction below 1 SM NA. Circling NA for Cats C and D south of Rwy 7-25. When local altimeter setting not received, use Abingdon altimeter setting and increase all MDAs 80 feet. Procedure NA at night.

MISSED APPROACH:
Climbing right turn to 6600
direct CASIS and hold.

AWOS-3 126.225	TRI-CITY APP CON ★ 134.425 349.0	UNICOM 122.7 (CTAF)
-------------------	-------------------------------------	------------------------



ELEV 2241	TDZE 2241
-----------	-----------



		Visual Segment - Obstacles.		7 NM Holding Pattern	
		AMAKY		CASIS	
MILCO		KIDZI		CASIS	
5000		5700		10000/6600	
0.5		7 NM		2.5 NM	
3.6 NM					
CATEGORY	A	B	C	D	
LNAV MDA	4880-1¼ 2639 (2700-1¼)	4880-1½ 2639 (2700-1½)	4880-3 2639 (2700-3)		
CIRCLING	4880-1¼ 2639 (2700-1¼)	4880-1½ 2639 (2700-1½)	4880-3 2639 (2700-3)		

SE-1, 07 AUG 2025 to 04 SEP 2025

SE-1, 07 AUG 2025 to 04 SEP 2025