

ALICEVILLE, ALABAMA

AL-9812 (FAA)

21.280

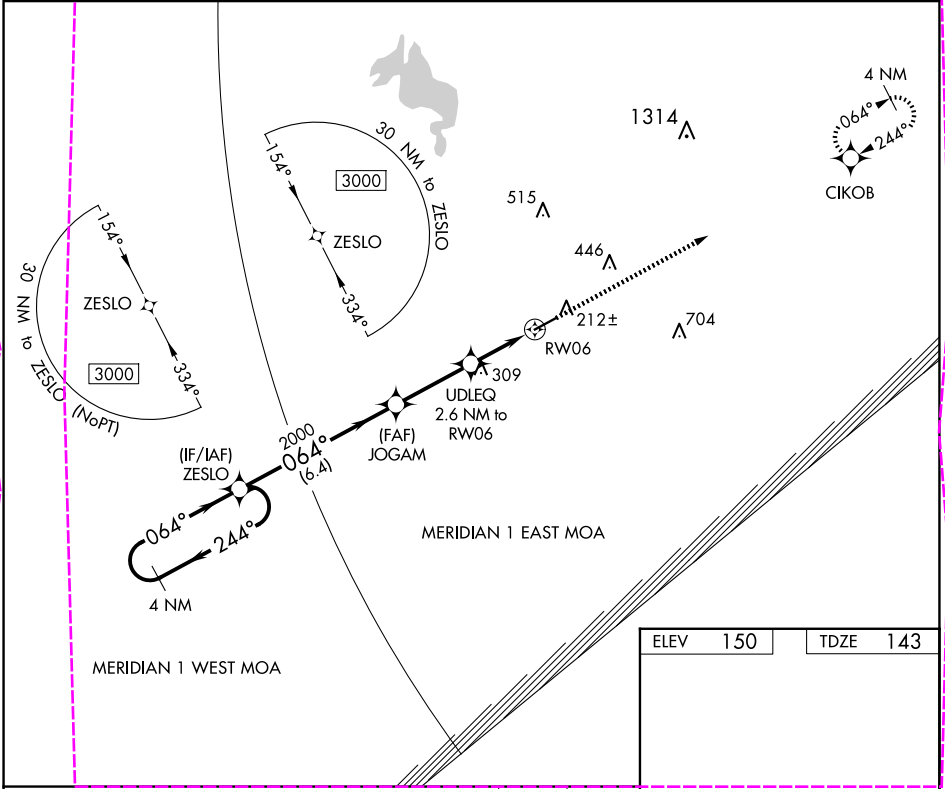
APP CRS	Rwy Idg	5001
064°	TDZE	143
	Apt Elev	150

# RNAV (GPS) RWY 6

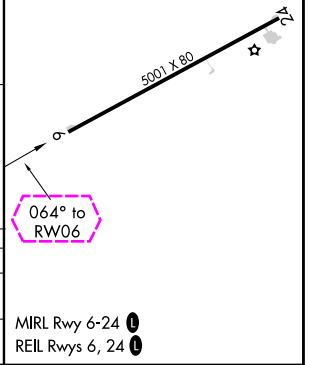
GEORGE DOWNER (AIV)

<p><b>NA</b></p> <p>DME/DME RNP-0.3 NA. Use Tuscaloosa Nil altimeter setting; when not received, use Columbus/W Point/Starkville altimeter setting and increase all MDA 20 feet, and Circling Cat C visibility ¼ mile. Procedure NA at night. Helicopter visibility reduction below 1 SM NA.</p>	<p><b>MISSED APPROACH:</b> Climb to 3000 direct CIKOB and hold.</p>
--	---

TCL ASOS 132.825	COLUMBUS APP CON 135.6 323.275	UNICOM 122.8 (CTAF) 0
---------------------	-----------------------------------	--------------------------



Visual Segment - Obstacles.				
4 NM Holding Pattern		3000 CIKOB		
3000 ← 244°		064° →		
ZESLO		JOGAM		
2000		1020		
UDLEQ 2.6 NM to RW06		RW06		
6.4 NM		3 NM		
2.6 NM				
CATEGORY	A	B	C	D
LNVA MDA	640-1	497 (500-1)	640-1 3/8	497 (500-1 3/8)
<b>CIRCLING</b>	720-1	570 (600-1)	820-1 3/4 670 (700-1 3/4)	900-2 1/2 750 (800-2 1/2)



ALICEVILLE, ALABAMA  
Orig-C 12OCT17

33°06'N-88°12'W

GEORGE DOWNER (AIV)  
RNAV (GPS) RWY 6

SE-4, 10 JUL 2025 to 07 AUG 2025

SE-4, 10 JUL 2025 to 07 AUG 2025

ALICEVILLE, ALABAMA

AL-9812 (FAA)

25219

APP CRS	Rwy Ldg	5001
064°	TDZE	143
	Apt Elev	150

# RNAV (GPS) RWY 6

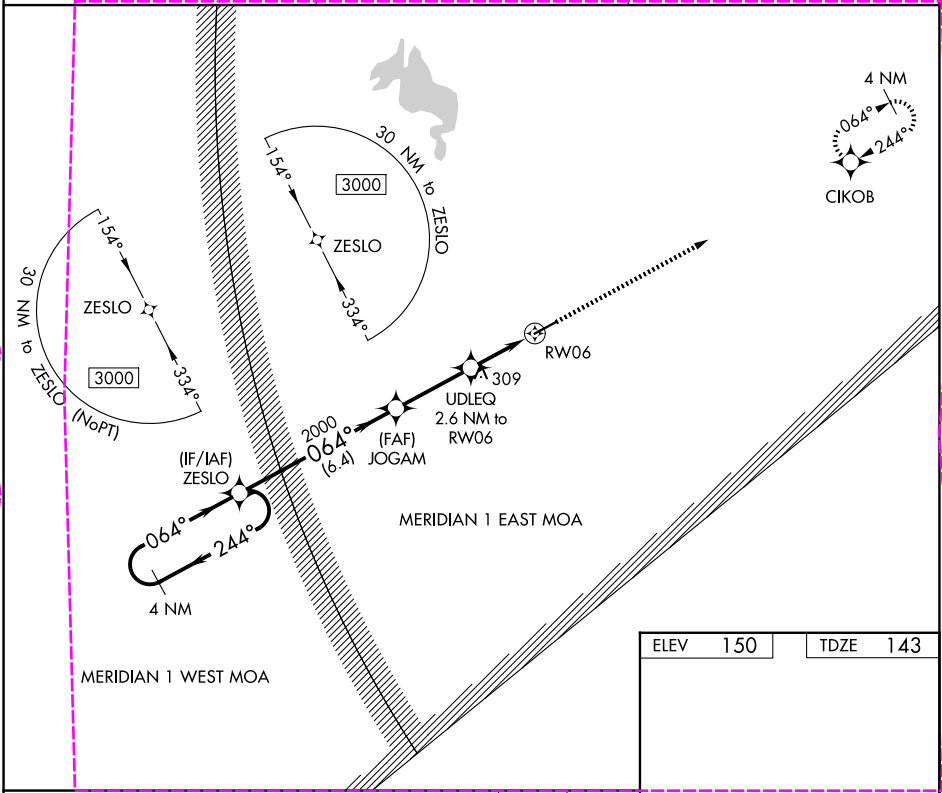
GEORGE DOWNER (AIV)

**NA**

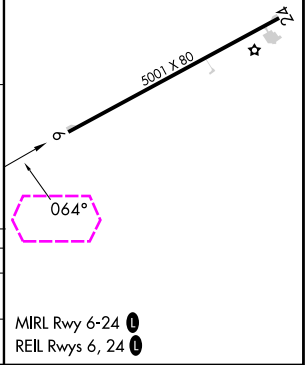
DME/DME RNP-0.3 NA. Use Tuscaloosa Nil altimeter setting; when not received, use Columbus/W Point/Starkville altimeter setting and increase all MDA 20 feet, and Circling Cat C visibility ¼ mile. Procedure NA at night. Helicopter visibility reduction below 1 SM NA.

**MISSED APPROACH:**  
Climb to 3000 direct CIKOB and hold.

TCL ASOS 132.825	COLUMBUS APP CON 135.6 323.275	UNICOM 122.8 (CTAF) 0
---------------------	-----------------------------------	--------------------------



Visual Segment - Obstacles.				
4 NM Holding Pattern		3000 CIKOB		
3000 ← 244°		064° →		
064°		064°		
2000		1020		
6.4 NM		3 NM		
2.6 NM		2.6 NM		
CATEGORY	A	B	C	D
LNNAV MDA	640-1	497 (500-1)	640-1 3/8	497 (500-1 3/8)
CIRCLING	720-1	570 (600-1)	820-1 3/4 670 (700-1 3/4)	900-2 1/2 750 (800-2 1/2)



ALICEVILLE, ALABAMA  
Orig-C 12OCT17

33°06'N-88°12'W

GEORGE DOWNER (AIV)  
RNAV (GPS) RWY 6

SE-4, 07 AUG 2025 to 04 SEP 2025

SE-4, 07 AUG 2025 to 04 SEP 2025