

ALICEVILLE, ALABAMA

AL-9812 (FAA)

21280

APP CRS	Rwy Idg	5001
244°	TDZE	150
	Apt Elev	150

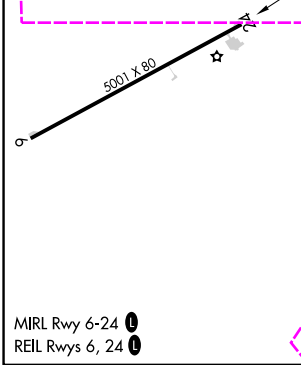
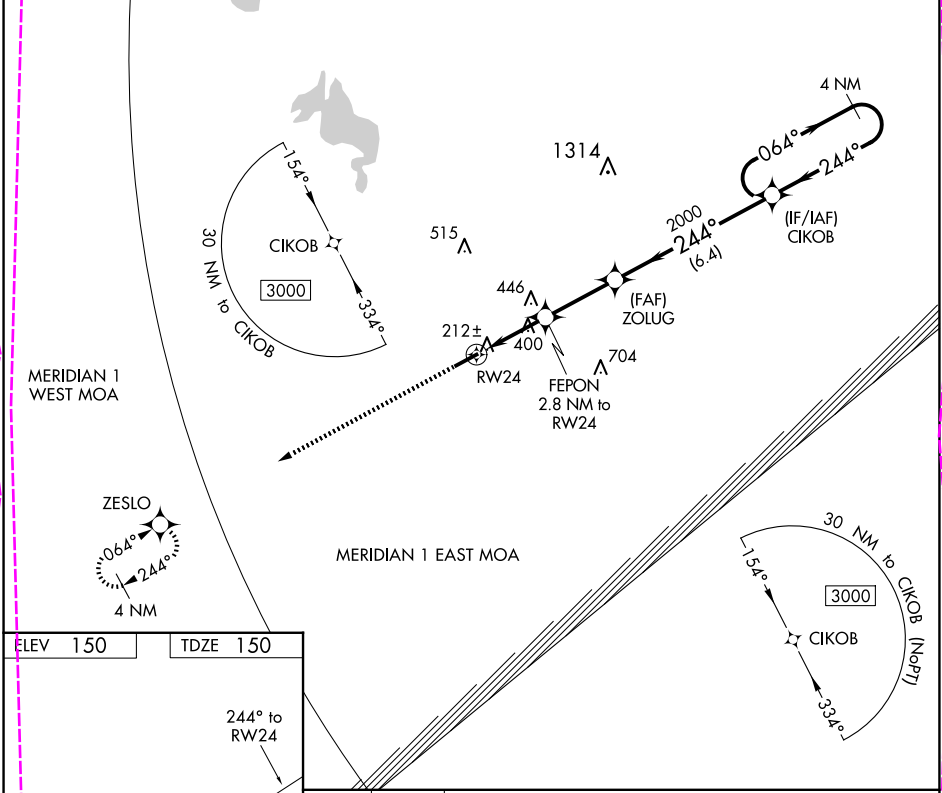
RNAV (GPS) RWY 24

GEORGE DOWNER (AIV)

NA DME/DME RNP-0.3 NA. Use Tuscaloosa altimeter setting; when not received, use Columbus/W Point/Starkville altimeter setting and increase all MDAs 20 feet, and Circling Cat C visibility ¼ SM. Procedure NA at night. Rwy 24 helicopter visibility reduction below 1 SM NA.

MISSED APPROACH:
Climb to 3000 direct ZESLO and hold.

TCL ASOS 132.825	COLUMBUS APP CON 135.6 323.275	UNICOM 122.8 (CTAF) 0
---------------------	-----------------------------------	--------------------------



ELEV 150	TDZE 150
244° to RW24	
3000	ZESLO
Visual Segment - Obstacles	
CIKOB	4 NM Holding Pattern
FEPON 2.8 NM to RW24	ZOLUG
RW24	1100
2000	244°
064°	3000
2.8 NM	2.8 NM
6.4 NM	
CATEGORY	A B C D
LNAV MDA	740-1 590 (600-1) 740-1 590 (600-1)
CIRCLING	740-1 590 (600-1) 820-1 900-2 670 (700-1) 750 (800-2)

ALICEVILLE, ALABAMA
Orig-A 05JAN17

33°06'N-88°12'W

RNAV (GPS) RWY 24

SE-4, 10 JUL 2025 to 07 AUG 2025

SE-4, 10 JUL 2025 to 07 AUG 2025

ALICEVILLE, ALABAMA

AL-9812 (FAA)

25219

APP CRS	Rwy Ldg	5001
244°	TDZE	150
	Apt Elev	150

RNAV (GPS) RWY 24

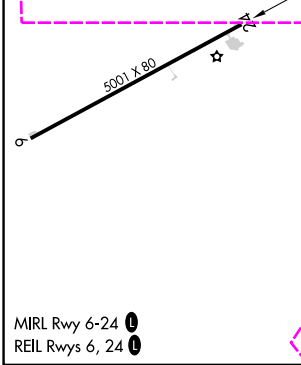
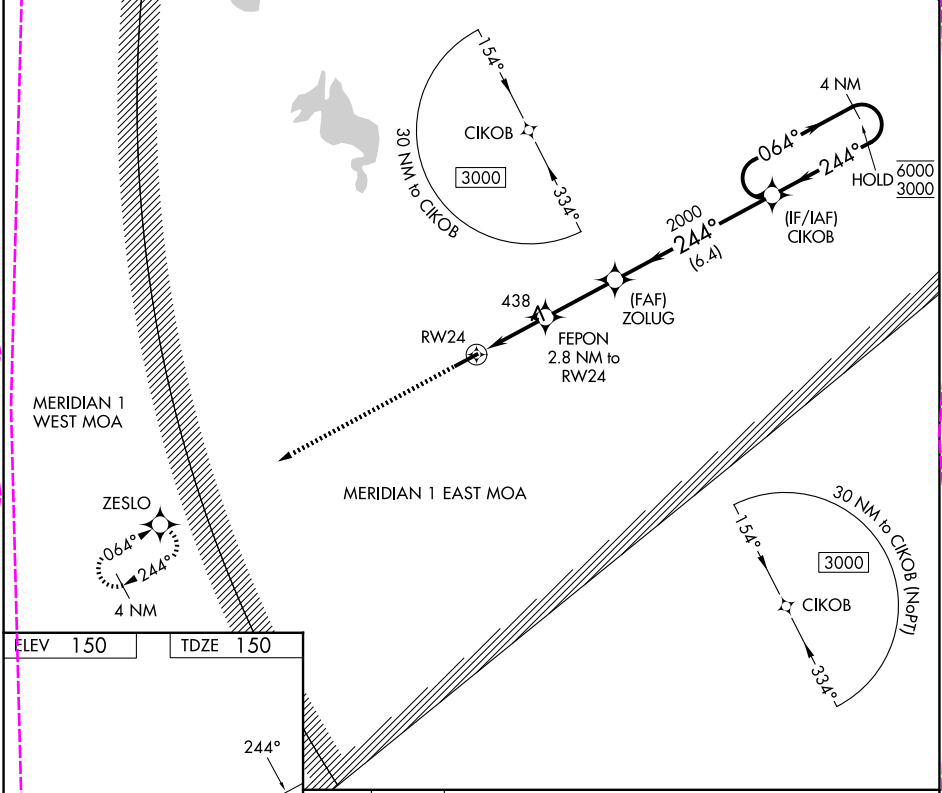
GEORGE DOWNER (AIV)

RNP APCH - GPS

▼ Rwy 24 helicopter visibility reduction below 1 SM NA. Procedure NA at night.
▲ NA Use TCL altimeter setting; when not received, use GTR altimeter setting and increase all MDAs 20 feet, and LNAV visibility Cat C/D ½ SM, and Circling visibility Cat C ½ SM.

MISSED APPROACH:
Climb to 3000 direct
ZESLO and hold.

TCL ASOS 132.825	COLUMBUS APP CON 135.6 323.275	UNICOM 122.8 (CTAF) 0
---------------------	-----------------------------------	--------------------------



Visual Segment - Obstacles			
3000	ZESLO	CIKOB	4 NM Holding Pattern
ZOLUG			
FEPON 2.8 NM to RW24			
RW24			
1100			
2000			
2.8 NM 2.8 NM 6.4 NM			
CATEGORY	A	B	C D
LNAV MDA	820-1	670 (700-1)	820-1 670 (700-1)
CIRCLING	820-1	670 (700-1)	820-1 670 (700-1) 940-2 790 (800-2)

ALICEVILLE, ALABAMA
Orig-B 07AUG25

33°06'N-88°12'W

RNAV (GPS) RWY 24

SE-4, 07 AUG 2025 to 04 SEP 2025

SE-4, 07 AUG 2025 to 04 SEP 2025