

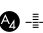
STAFFORD, VIRGINIA

AL-9743 (FAA)

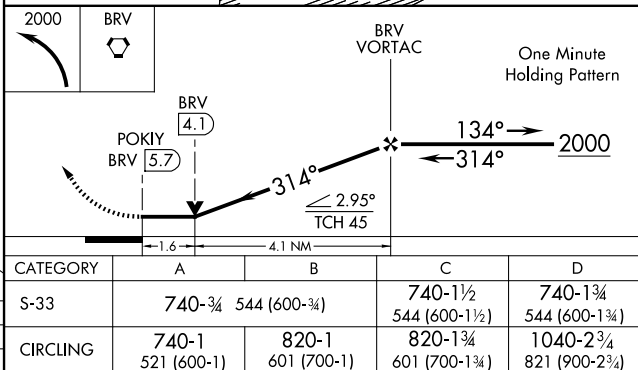
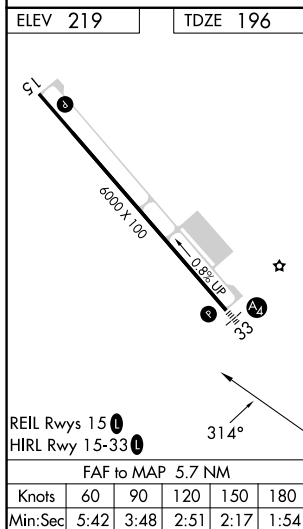
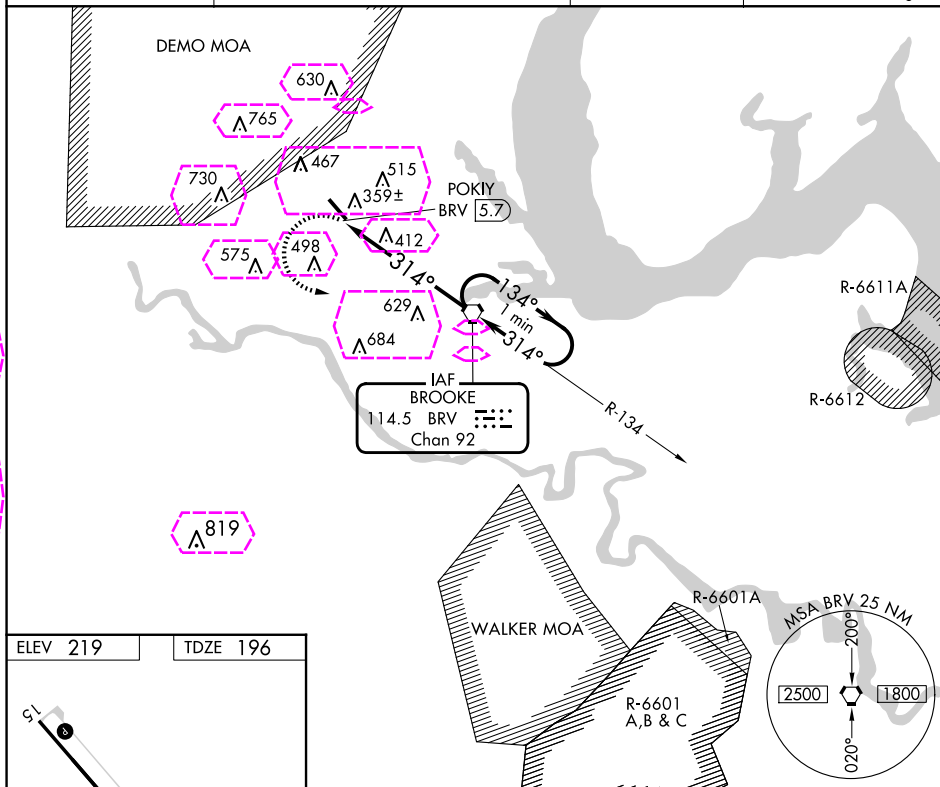
24249

VORTAC BRV	APP CRS	Rwy Idg	6000
114.5	314°	TDZE	196
Chan 92		Apt Elev	219

**VOR RWY 33**  
STAFFORD RGNL (RMN)

<p>▼</p> <p>Inoperative table does not apply to Cat C. Circling Rwy 15 NA at night.</p>	<p>MALS</p> <p></p>	<p>MISSED APPROACH: Climbing left turn to 2000 direct BRV VORTAC and hold.</p>
---	--	--

AWOS-3 <b>126.325</b>	QUANTICO APP CON ★ <b>127.05 290.375</b>	GCO <b>135.075</b>	UNICOM <b>122.725 (CTAF) 0</b>
--------------------------	---	-----------------------	-----------------------------------



STAFFORD, VIRGINIA  
Amdt 1B 16MAY24

38°24'N - 77°27'W

STAFFORD RGNL (RMN)  
**VOR RWY 33**

NE-3, 10 JUL 2025 to 07 AUG 2025

NE-3, 10 JUL 2025 to 07 AUG 2025

STAFFORD, VIRGINIA

AL-9743 (FAA)

25219

VORTAC BRV	APP CRS	Rwy Ldg	6000
114.5	314°	TDZE	196
Chan 92		Apt Elev	219

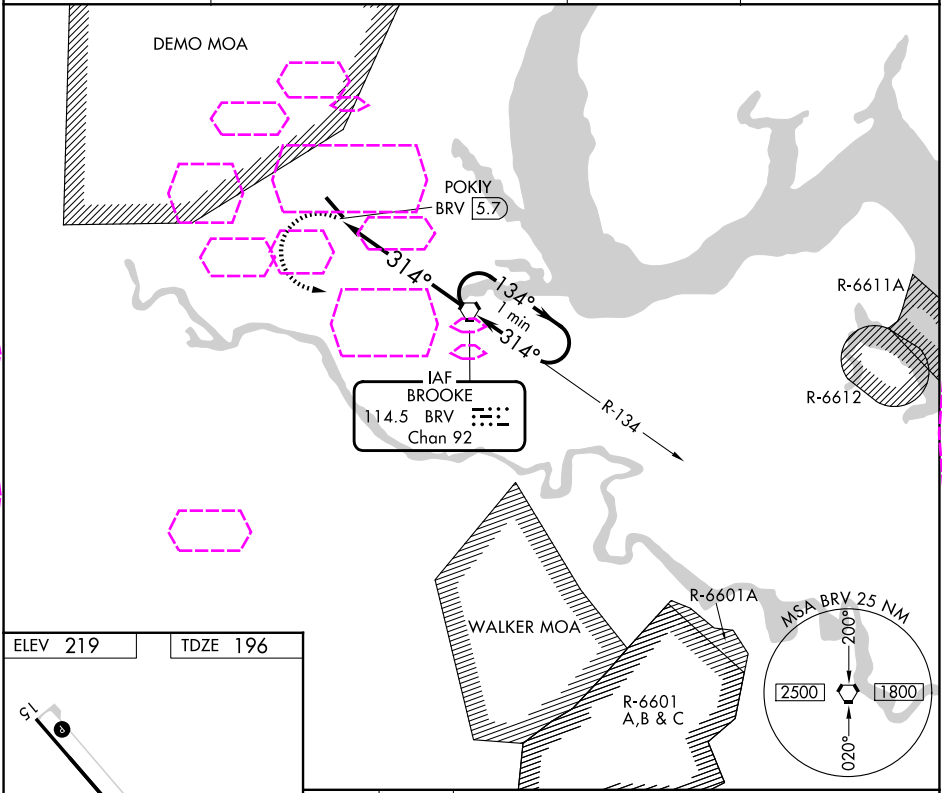
VOR RWY 33  
STAFFORD RGNL (RMN)

Inoperative table does not apply to Cat C.  
Circling Rwy 15 NA at night.

MALS

MISSED APPROACH: Climbing left turn to 2000 direct BRV VORTAC and hold.

AWOS-3 126.325	QUANTICO APP CON ★ 127.05 290.375	GCO 135.075	UNICOM 122.725 (CTAF) 0
-------------------	--------------------------------------	----------------	----------------------------



ELEV 219 TDZE 196

REIL Rwys 15  
HIRL Rwy 15-33

FAF to MAP 5.7 NM

Knots	60	90	120	150	180
Min:Sec	5:42	3:48	2:51	2:17	1:54

2000 BRV

BRV VORTAC

One Minute Holding Pattern

POKIY BRV 5.7

BRV 4.1

134°

314°

2000

≤ 2.95°

TCH 45

1.6

4.1 NM

CATEGORY	A	B	C	D
S-33	740- $\frac{3}{4}$	544 (600- $\frac{3}{4}$ )	740-1 $\frac{1}{2}$ 544 (600-1 $\frac{1}{2}$ )	740-1 $\frac{3}{4}$ 544 (600-1 $\frac{3}{4}$ )
CIRCLING	740-1 521 (600-1)	820-1 601 (700-1)	820-1 $\frac{1}{4}$ 601 (700-1 $\frac{1}{4}$ )	1040-2 $\frac{3}{4}$ 821 (900-2 $\frac{3}{4}$ )