

STAFFORD RGNL (RMN)
RNAV (GPS) RWY 33

STAFFORD, VIRGINIA

AL-9743 (FAA)

25219

WAAS CH 81805 W33A	APP CRS 329°	Rwy Ldg TDZE 195 Apt Elev 219
--	------------------------	---

RNAV (GPS) RWY 33

STAFFORD RGNL (RMN)

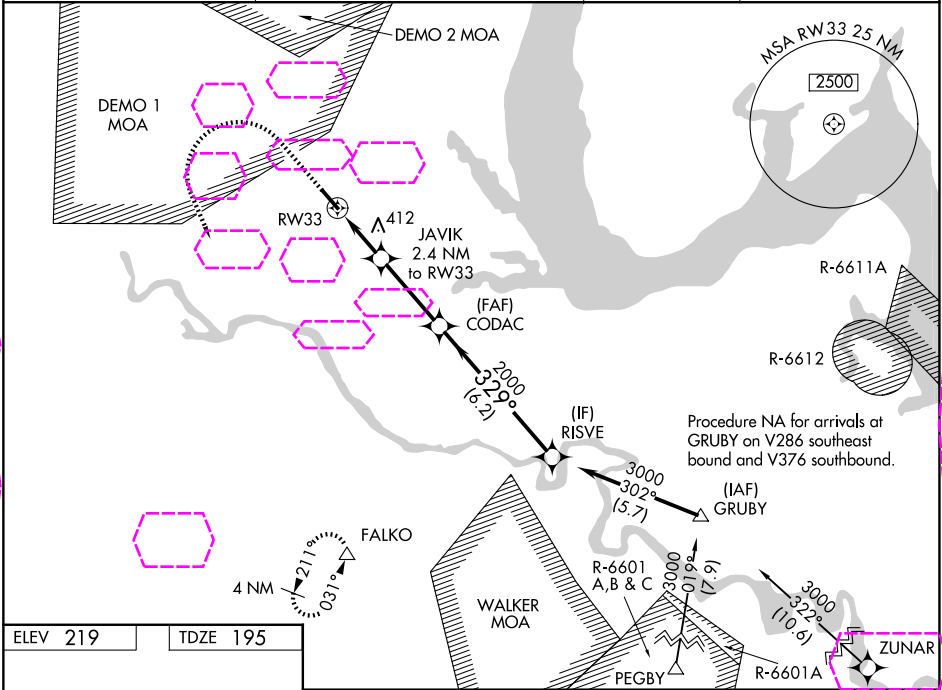
RNP APCH - GPS.

⚠ Inop table does not apply to LPV all Cats. For uncompensated Baro-VNAV systems, LNAV/VNAV NA below -15°C or above 54°C. Circling Rwy 15 NA at night.

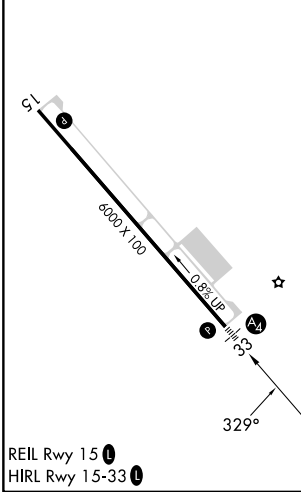


MISSED APPROACH: Climb to 700 then climbing left turn to 3000 direct FALKO and hold, continue climb-in-hold to 3000.

AWOS-3 126.325	QUANTICO APP CON ★ 127.05 290.375	GCO 135.075	UNICOM 122.725 (CTAF)
--------------------------	---	-----------------------	---------------------------------



ELEV 219	TDZE 195
-----------------	-----------------



	700	3000	FALKO	
	↑	↖	△	
CATEGORY	A	B	C	D
LPV DA	445-3⁄8 250 (300-3⁄4)			
LNAV/VNAV DA	680-1⁄8 485 (500-1⁄8)			
LNAV MDA	680-3⁄4	485 (500-3⁄4)	680-1⁄8	485 (500-1⁄8)
CIRCLING	720-1 501 (600-1)	820-1 601 (700-1)	820-13⁄4 601 (700-13⁄4)	1040-23⁄4 821 (900-23⁄4)

STAFFORD, VIRGINIA
Amdt 2 16MAY24

38°24'N - 77°27'W

RNAV (GPS) RWY 33

NE-3, 07 AUG 2025 to 04 SEP 2025

NE-3, 07 AUG 2025 to 04 SEP 2025