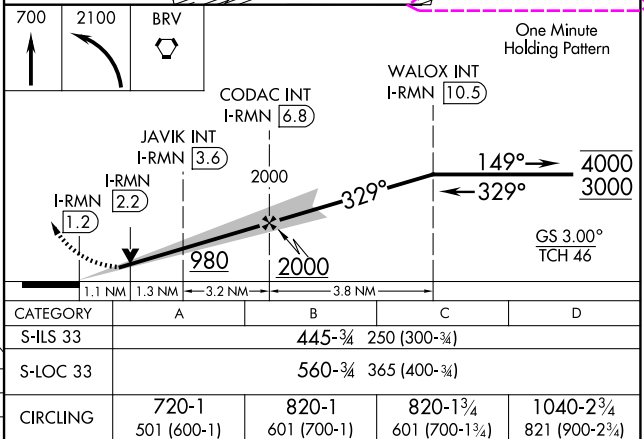
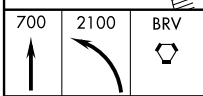


ILS or LOC RWY 33
STAFFORD RGNL (B.MN)

MISSED APPROACH: Climb to 700 then climbing left turn to 2100 direct BRV VORTAC and hold, continue climb-in-hold to 2100.

A₄ —

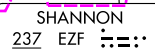
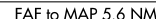
UNICOM
122 725 (CTAF) 

STAFFORD RGNL (RMN)
ILS or LOC RWY 33

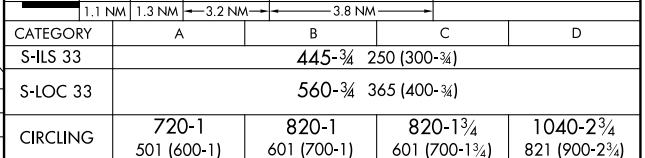
ILS or LOC RWY 33
STAFFORD RGNI (RMN)

MISSED APPROACH: Climb to 700 then climbing left turn to 2100 direct BRV VORTAC and hold, continue climb-in-hold to 2100.

UNICOM
122 725 (CTAF)

TDZE 195

Knots	60	90	120	150	180
Min:Sec	5:36	3:44	2:48	2:14	1:52



STAFFORD RGNL (RMN)
ILS or LOC RWY 33