

SCOBEY, MONTANA

AL-9500 (FAA)

24081

|                        |                         |
|------------------------|-------------------------|
| APP CRS<br><b>122°</b> | Rwy Idg<br><b>4020</b>  |
|                        | TDZE<br><b>2426</b>     |
|                        | Apt Elev<br><b>2434</b> |

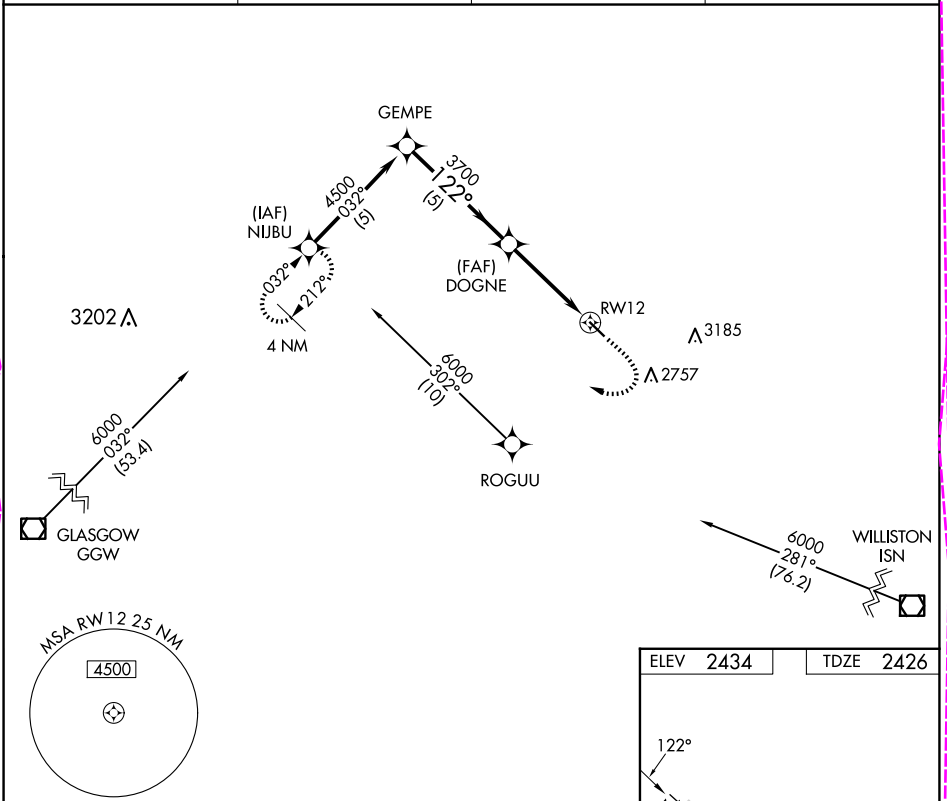
# RNAV (GPS) RWY 12

SCOBEY (9S2)

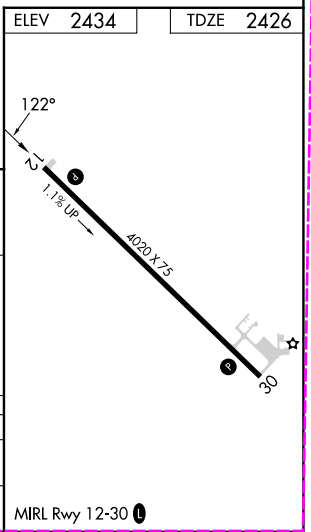
**NA** DME/DME RNP-0.3 NA. Use Wolf Point altimeter setting; when not received procedure not authorized. Helicopter visibility reduction below  $\frac{3}{4}$  SM NA.

**MISSED APPROACH:** Climb to 3600 then climbing right turn to 6000 direct NIJBU WP and hold.

|                            |                            |  |                                |
|----------------------------|----------------------------|--|--------------------------------|
| AWOS-3PT<br><b>128.325</b> | OLF ASOS<br><b>118.325</b> | SALT LAKE CITY CENTER<br><b>126.85 305.2</b> | AUNICOM<br><b>122.8 (CTAF)</b> |
|----------------------------|----------------------------|--|--------------------------------|



|  |                       |                       |    |
|--|-----------------------|-----------------------|----|
| VGSI and descent angles not coincident (VGSI Angle 3.00/TCH 25). |                       |                       |    |
|  |                       |                       |    |
| Procedure Turn NA  |                       |                       |    |
|  |                       |                       |    |
| CATEGORY   | A                     | B                     | C  |
| LNAV MDA   | 3100-1                | 674 (700-1)           | NA |
| CIRCLING   | 3100-1<br>666 (700-1) | 3160-1<br>726 (800-1) | NA |



SCOBEY, MONTANA

SCOBEY (9S2)

Orig-D 20MAY21

48°48'N-105°26'W

# RNAV (GPS) RWY 12

SCOBEY, MONTANA

AL-9500 (FAA)

25219

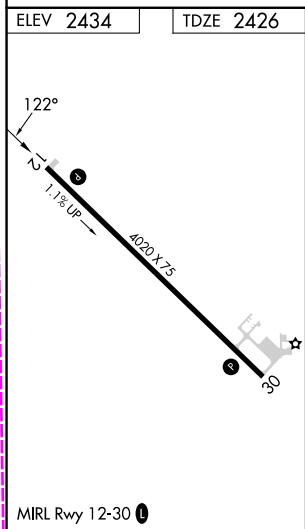
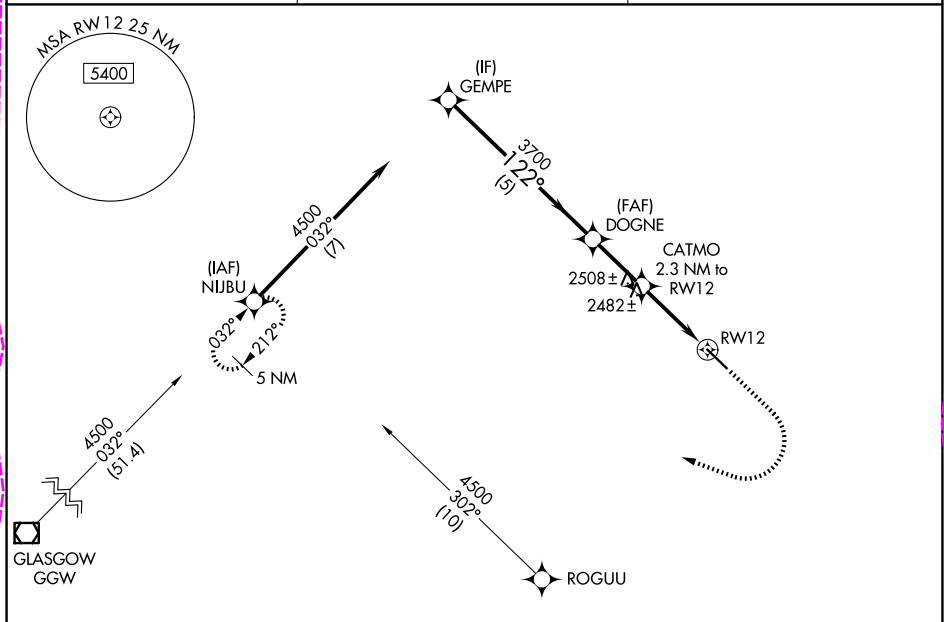
|         |          |      |
|---------|----------|------|
| APP CRS | Rwy Ldg  | 4020 |
| 122°    | TDZE     | 2426 |
|         | Apt Elev | 2434 |

# RNAV (GPS) RWY 12

SCOBEY (9S2)

|  |  |
|--|--|
| RNP APCH - GPS.  |  |
| <p>▼ VDP NA when using PWD altimeter setting. Circling Rwy 30</p> <p>▲ NA at night. When local altimeter setting not received, use PWD altimeter setting and increase all MDAs 120 feet.</p> | MISSED APPROACH: Climb to 2900 then climbing right turn to 4500 direct NIJBU and hold. |

|                     |                                       |                           |
|---------------------|---------------------------------------|---------------------------|
| AWOS-3PT<br>128.325 | SALT LAKE CITY CENTER<br>126.85 305.2 | AUNICOM<br>122.8 (CTAF) 1 |
|---------------------|---------------------------------------|---------------------------|



|          |        |  |        |       |                |              |      |
|----------|--------|--|--------|-------|----------------|--------------|------|
|          | GEMPE  | VGSI and descent angles not coincident (VGSI Angle 3.00/TCH 25). | DOGNE  | CATMO | 2.3 NM to RW12 | 1 NM to RW12 | RW12 |
|          | 4500   | 122°   | 3700   | 3160  |                |              |      |
|          | 5 NM   | 1.7 NM   | 1.3 NM | 1 NM  |                |              |      |
| CATEGORY | A      | B  | C      | D     |                |              |      |
| LNAV MDA | 2740-1 | 314 (400-1)  | NA     | NA    |                |              |      |
| CIRCLING | 2940-1 | 506 (600-1)  | NA     | NA    |                |              |      |

SCOBEY, MONTANA  
Amdt 1 07AUG25

48°48'N-105°26'W

# RNAV (GPS) RWY 12

NW-1, 07 AUG 2025 to 04 SEP 2025