

WAAS CH <b>63221</b> <b>W17A</b>	APP CRS <b>168°</b>	Rwy Ldg <b>6300</b> TDZE <b>5005</b> Apt Elev <b>5022</b>
--	------------------------	---

RNAV (GPS) RWY 17  
NEPHI MUNI (U14)

NEPHI MUNI (U14)

RNP APCH - GPS.
-----------------

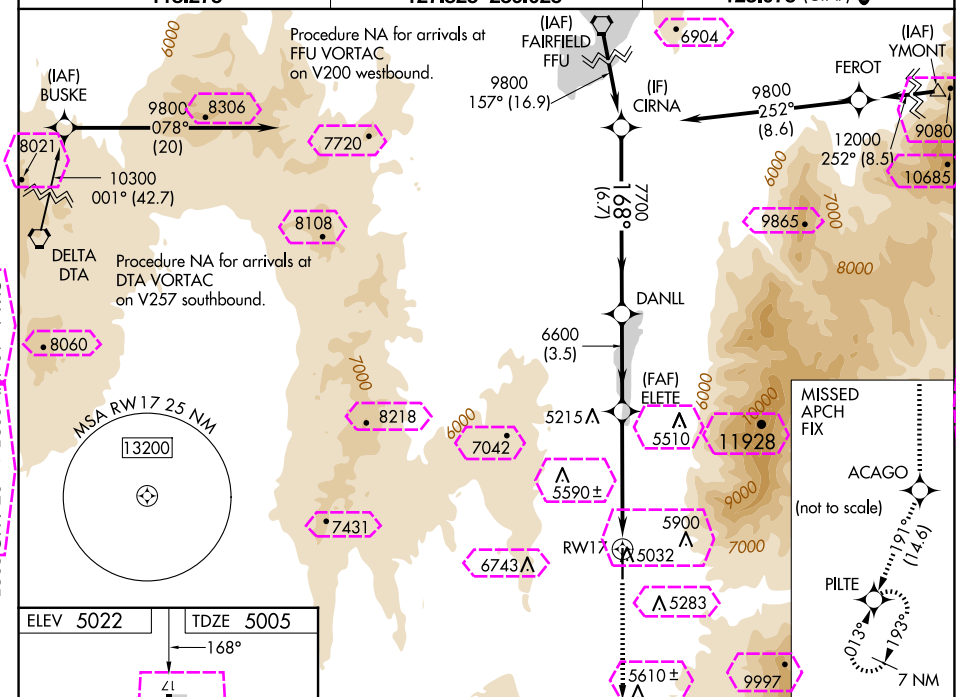
**▼**  
**▲** **NA**

Baro-VNAV NA when using Provo Muni altimeter setting. For uncompensated Baro-VNAV systems, LNAV/VNAV NA below -24°C or above 12°C. When local altimeter setting not received, use Provo altimeter setting: increase LPV DA to 5577 feet and visibility all Cats ½ SM, increase LNAV/VNAV DA to 5836 feet and visibility all Cats ½ SM; increase all MDA 160 feet and LNAV and Circling visibilities Cats A/B ½ SM. Circling Cat C NA. VDP NA with Provo Muni altimeter setting.

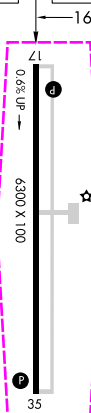
**MISSED APPROACH:**  
Climb to 11 400 direct  
ACAGO and on track  
191° to PILTE and hold.

AWOS-3  
118.275

SALT LAKE CENTER  
127-825 239-025

UNICOM  
123.075 (CTAF) 

ELEV 5022		TDZE 5005
-----------	--	-----------



MIRL Rwy 17-35 **L**  
REIL Rwys 17 and 35 **L**

11400 ↑	ACAGO ✧	tr 191° ✧	PILTE ✧	<div>ETE 191°</div> <div>DANLL</div> <div>CIRNA</div> <div>9800</div> <div>168°</div> <div>7700</div> <div>6600</div> <div>6600</div> <div>2.4 NM</div> <div>2.5 NM</div> <div>3.5 NM</div> <div>6.7 NM</div> <div>GP 3.00°</div> <div>TCH 40</div>					
*LNAV only.				*2.4 NM to RW17				GP 3.00° TCH 40	
CATEGORY		A		B		C		D	
LPV	DA	5433-1½				428 (500-1½)			
LNAV/ VNAV	DA	5692-2½				687 (700-2½)			
LNAV MDA		5800-1 795 (800-1)		5800-1¼ 795 (800-1¼)		5800-2½		795 (800-2½)	
CIRCLING		5800-1 778 (800-1)		5800-1¼ 778 (800-1¼)		6920-3 1898 (1900-3)		NA	

NEPHI, UTAH

Orig-C 03NOV22

39°44'N-111°52'W

NEPHI MUNI (U14)

## RNAV (GPS) RWY 17

WAAS CH <b>63221</b> <b>W17A</b>	APP CRS <b>168°</b>	Rwy Ldg <b>6300</b> TDZE <b>5005</b> Apt Elev <b>5022</b>
--	------------------------	---

RNAV (GPS) RWY 17  
NEPHI MUNI (U14)

NEPHI MUNI (U14)

RNP APCH - GPS.
-----------------

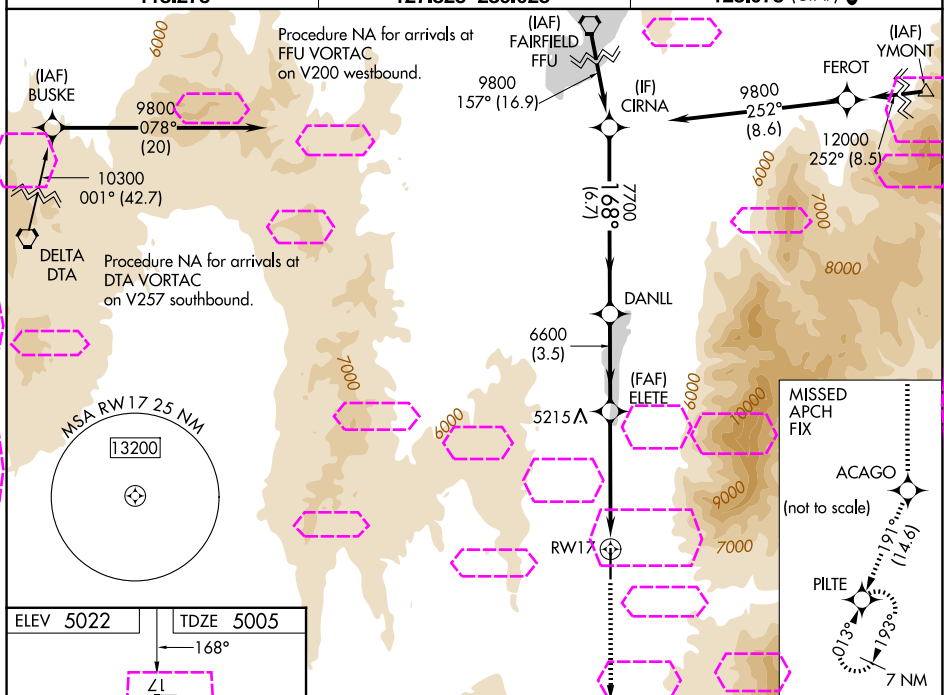
**T** Baro-VNAV NA when using Provo Muni altimeter setting. For uncompensated Baro-VNAV systems, LNAV/VNAV NA below -24°C or above 12°C. When local altimeter setting not received, use Provo altimeter setting: increase LPV DA to 5577 feet and visibility all Cats ½ SM, increase LNAV/VNAV DA to 5836 feet and visibility all Cats ½ SM; increase all MDA 160 feet and LNAV and Circling visibilities Cats A/B ½ SM. Circling Cat C NA. VDP NA with Provo Muni altimeter setting.

**MISSED APPROACH:**  
Climb to 11 400 direct  
ACAGO and on track  
191° to PILTE and hold.

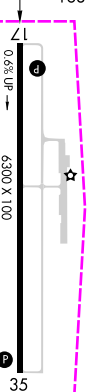
AWOS-3PT  
118.275

SALT LAKE CENTER  
127.825 239.025

UNICOM  
123.075 (CTAF) 



ELEV 5022			TDZE 5005
-----------	--	--	-----------

 $168^\circ$ 

MIRL Rwy 17-35 **L**  
REIL Rwys 17 and 35 **L**

11400 ↑	ACAGO ✧	tr 191° ✧	PILTE	CIRNA			
*LNAV only.		*2.4 NM to RW17		ELETE 6600	DANLL 7700	168° 9800	GP 3.00° TCH 40
RW17		2.4 NM	2.5 NM	3.5 NM	6.7 NM		
CATEGORY	A		B		C	D	
LPV DA	5433-1½				428 (500-1½)		
LNAV/ VNAV	5692-2½				687 (700-2½)		
LNAV MDA	5800-1 795 (800-1)	5800-1¼ 795 (800-1¼)		5800-2½		795 (800-2½)	
CIRCLING	5800-1 778 (800-1)	5800-1¼ 778 (800-1¼)		6920-3 1898 (1900-3)		NA	

NEPHI, UTAH

Orig-C 03NOV22

39°44'N-111°52'W

NFPHI MUNI (TT14)

RNAV (GPS) RWY 17

SW-4, 07 AUG 2025 to 04 SEP 2025