

ANGEL FIRE, NEW MEXICO

AL-9482 (FAA)

25163

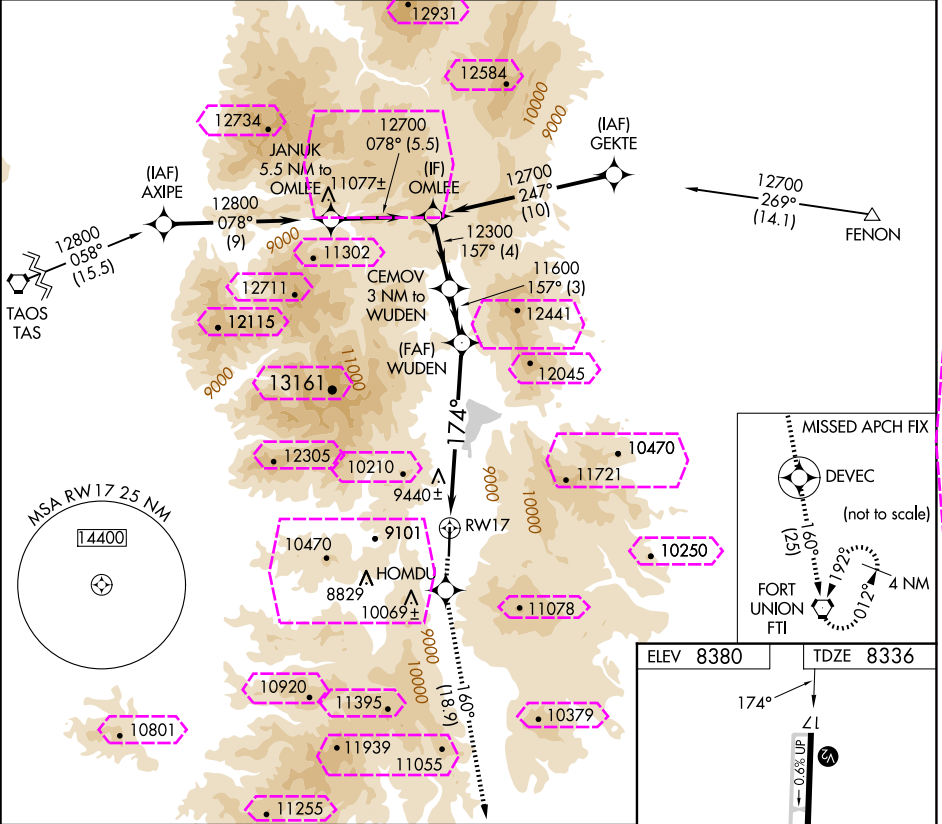
APP CRS	Rwy Ldg	8900
174°	TDZE	8336
	Apt Elev	8380






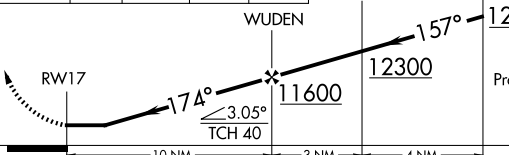
RNAV (GPS) RWY 17

ANGEL FIRE (Axx)

NA -30°C	If local altimeter setting not received, procedure NA. DME/DME RNP-0.3 NA.	MISSED APPROACH: Climb to 14000 via 174° course to HOMDU and via 160° track to DEVEC and 160° track to FTI VORTAC and hold.
-------------	--	---

AWOS-3 118.025	ALBUQUERQUE CENTER 132.8 346.35	UNICOM 122.8 (CTAF) 0
-------------------	------------------------------------	--------------------------



14000 ↑ 174°	HOMDU 	160° tr 	DEVEC 	160° tr 	FTI 	CEMOV 3 NM to WUDEN	OMLEE
 <p>Diagram details: The diagram shows a flight path starting from the left, turning 174° to a 160° track. It then turns 157° to a 12300 MDA segment, and finally turns 174° to a 11600 MDA segment. Distances of 10 NM, 3 NM, and 4 NM are marked along the path. A 3.05° TCH 40° angle is also indicated.</p>							
CATEGORY	A		B		C		D
LNAV MDA	9960-1¼ 1624 (1600-1¼)		9960-1½ 1624 (1600-1½)		9960-3 1624 (1600-3)		NA
CIRCLING	NA						

ELEV 8380	TDZE 8336
REIL Rwy 17 and 35	
MIRL Rwy 17-35 0	

ANGEL FIRE, NEW MEXICO
Amdt 1C 23JUL15

36°25'N-105°17'W

RNAV (GPS) RWY 17

ANGEL FIRE (Axx)

ANGEL FIRE, NEW MEXICO

AL-9482 (FAA)

25219

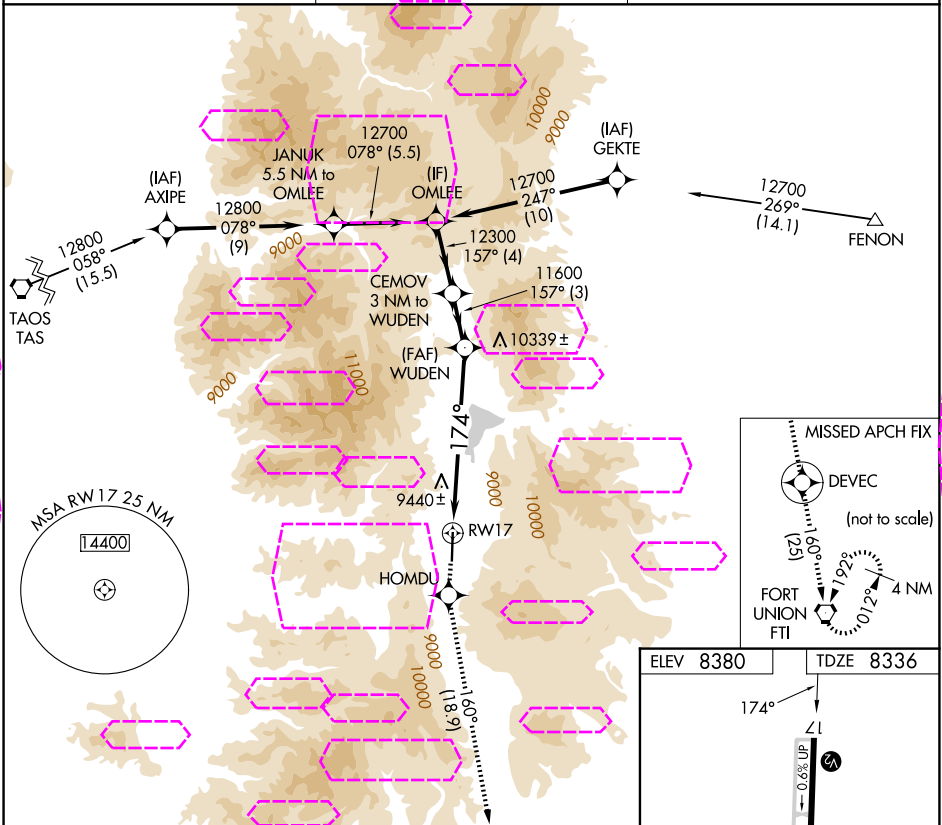
APP CRS	Rwy Ldg	8900
174°	TDZE	8336
	Apt Elev	8380

RNAV (GPS) RWY 17

ANGEL FIRE (Axx)

NA -29°C	If local altimeter setting not received, procedure NA. DME/DME RNP-0.3 NA.	MISSED APPROACH: Climb to 14000 via 174° course to HOMDU and via 160° track to DEVEC and 160° track to FTI VORTAC and hold.
-------------	--	---

AWOS-3 118.025	ALBUQUERQUE CENTER 132.8 346.35	UNICOM 122.8 (CTAF) 0
-------------------	------------------------------------	--------------------------



14000 ↑ 174°	HOMDU 	160° tr 	DEVEC 	160° tr 	FTI 	CEMOV 3 NM to WUDEN	OMLEE
CATEGORY	A	B	C	D			
LNAV MDA	9960-1¼ 1624 (1600-1¼)	9960-1½ 1624 (1600-1½)	9960-3 1624 (1600-3)	NA			
CIRCLING	NA						

ELEV 8380	TDZE 8336
REIL Rwy 17 and 35	
MIRL Rwy 17-35 0	

SW-1, 07 AUG 2025 to 04 SEP 2025

SW-1, 07 AUG 2025 to 04 SEP 2025