

PIKE COUNTY/HATCHER FLD (PBX)  
RNAV (GPS) RWY 9

PIKEVILLE, KENTUCKY

AL-9449 (FAA)

25219

WAAS CH <b>61240</b> <b>W09A</b>	APP CRS <b>094°</b>	Rwy Ldg TDZE <b>1459</b> Apt Elev <b>1465</b>
--	------------------------	---

# RNAV (GPS) RWY 9

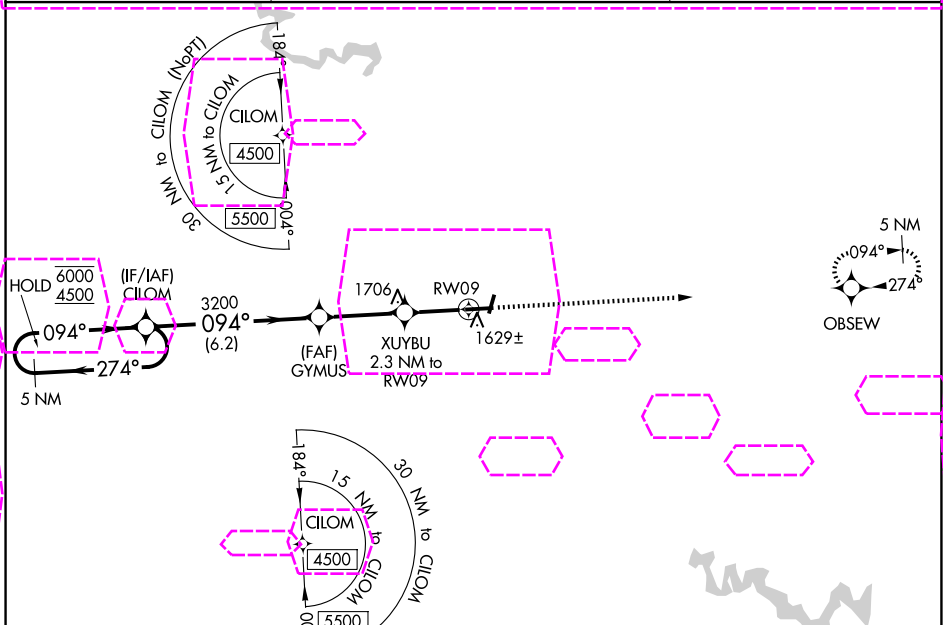
PIKE COUNTY/HATCHER FLD (PBX)

RNP APCH - GPS.

▼ For uncompensated Baro-VNAV systems, LNAV/VNAV NA below -17°C or above 54°C. Circling Rwy to Rws 2 and 20. Helicopter visibility reduction below ¾ SM NA.

MISSED APPROACH: Climb to 4500 direct OBSEW and hold. Continue climb in hold to 4500.

AWOS-3PT <b>121.225</b>	INDIANAPOLIS CENTER <b>126.575 257.85</b>	UNICOM <b>122.8 (CTAF) 0</b>
----------------------------	--	---------------------------------



ELEV <b>1465</b>		D TDZE <b>1459</b>	
5 NM Holding Pattern			
VGSI and RNAV glidepath not coincident (VGSI Angle 3.00/TCH 35).			
GP 3.00° TCH 40			
6000 4500 3200 2220 1706 1459			
6.2 NM 3.1 NM 0.8 NM 1.5 NM			
CATEGORY	A	B	C
LPV DA	1709-1 250 (300-1)		
LNAV/VNAV DA	1891-1½ 432 (500-1½)		
LNAV MDA	1960-1 501 (500-1)	1960-1¾ 501 (500-1¾)	
CIRCLING	2120-1 655 (700-1)	2180-1 715 (800-1)	2180-2 715 (800-2) 2460-3 995 (1000-3)

PIKEVILLE, KENTUCKY  
Amdt **2A 07AUG25**

37°34'N-82°34'W

PIKE COUNTY/HATCHER FLD (PBX)  
RNAV (GPS) RWY 9