

PIKEVILLE, KENTUCKY

AL-9449 (FAA)

23278

RNAV (GPS) RWY 27

PIKE COUNTY/HATCHER FLD (PBX)

WAAS
CH **86540**
W27A

APP CRS
274°

Rwy Ldg **4650**
TDZE **1463**
Apt Elev **1470**



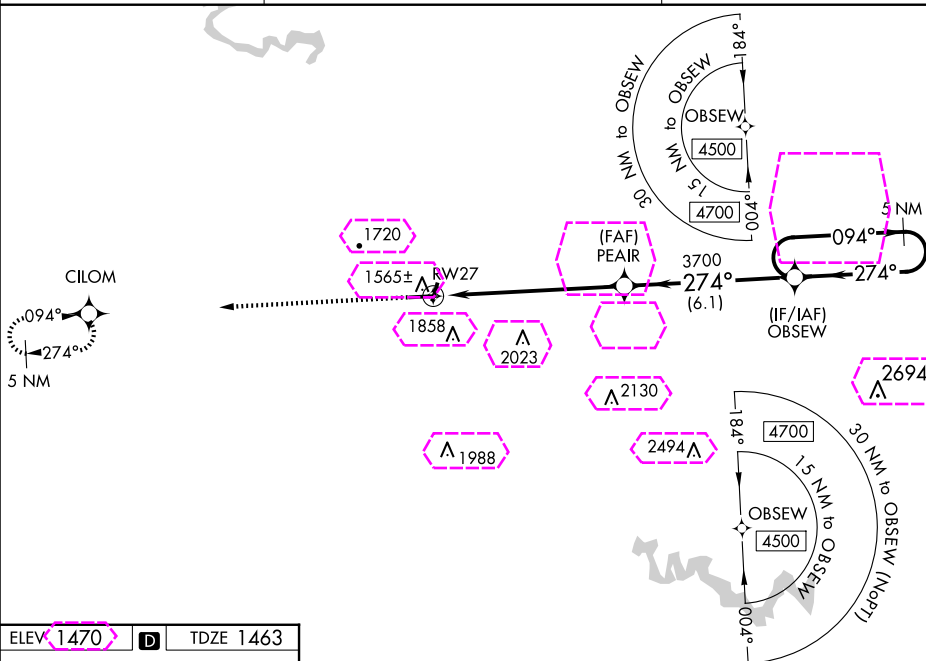
For uncompensated Baro-VNAV systems, LNAV/VNAV NA below -17°C (0°F) or above 54°C (130°F). DME/DME RNP-0.3 NA. Circling NA to Rwy 2 and 20.

MISSED APPROACH: Climb to 4500 direct CILOM and hold.

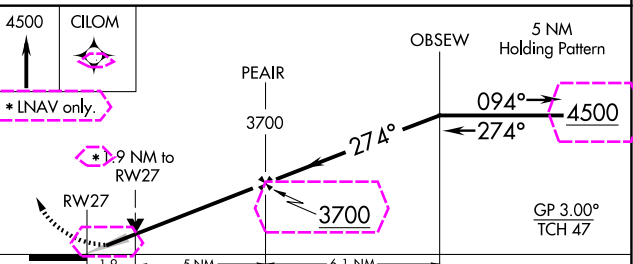
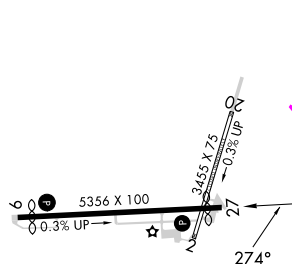
AWOS-3PT
121.225

INDIANAPOLIS CENTER
126.575 257.85

UNICOM
122.8 (CTAF) 0

ELEV **1470**

D

TDZE **1463**

CATEGORY	A	B	C	D
LPV DA		1663-1	200 (200-1)	
LNAV/VNAV DA		2175-2 1/2	712 (800-2 1/2)	
LNAV MDA	2120-1	657 (700-1)	2120-1 3/4	657 (700-1 3/4)
CIRCLING	2120-1 650 (700-1)	2160-1 690 (700-1)	2160-2 690 (700-2)	2460-3 990 (1000-3)

HIRL Rwy 9-27 0

REIL Rwy 9 and 27 0

PIKEVILLE, KENTUCKY

Amdt 2 17AUG17

37°34'N-82°34'W

PIKE COUNTY/HATCHER FLD (PBX)

RNAV (GPS) RWY 27

SE-1, 10 JUL 2025 to 07 AUG 2025

PIKEVILLE, KENTUCKY

AL-9449 (FAA)

25219

WAAS CH 86540 W27A	APP CRS 274°	Rwy Ldg TDZE 1463 Apt Elev 1465
--	------------------------	---

RNAV (GPS) RWY 27

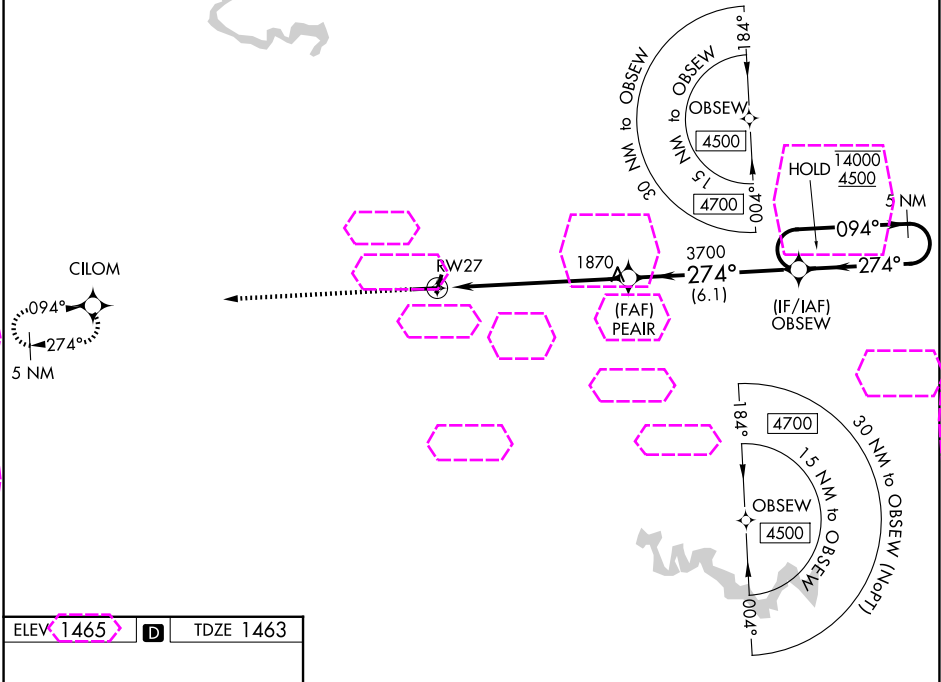
PIKE COUNTY/HATCHER FLD (PBX)

RNP APCH - GPS.

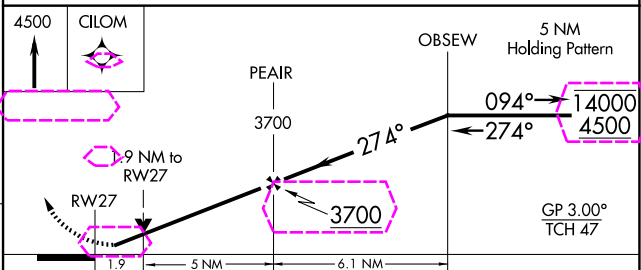
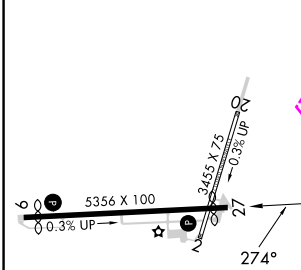
⚠ For uncompensated Baro-VNAV systems, LNAV/VNAV NA below -17°C or above 54°C. Rwy 27 helicopter visibility reduction below 3/4 SM NA. Circling NA to Rwys 2 and 20.

MISSED APPROACH: Climb to 4500 direct CILOM and hold, continue climb-in-hold to 4500.

AWOS-3PT 121.225	INDIANAPOLIS CENTER 126.575 257.85	UNICOM 122.8 (CTAF) 0
----------------------------	--	---------------------------------



ELEV 1465	TDZE 1463
------------------	------------------



CATEGORY	A	B	C	D
LPV DA		1722-1	259 (300-1)	
LNAV/VNAV DA		2120-1 7/8	657 (700-1 7/8)	
LNAV MDA	2120-1	657 (700-1)	2120-1 7/8	657 (700-1 7/8)
CIRCLING	2120-1 655 (700-1)	2180-1 715 (800-1)	2180-2 715 (800-2)	2460-3 995 (1000-3)

HIRL Rwy 9-27 0
REIL Rws 9 and 27 0

PIKEVILLE, KENTUCKY
Amdt 2A 07AUG25

37°34'N-82°34'W

PIKE COUNTY/HATCHER FLD (PBX)
RNAV (GPS) RWY 27

SE-1, 07 AUG 2025 to 04 SEP 2025

SE-1, 07 AUG 2025 to 04 SEP 2025