

PANGUITCH, UTAH

AL-9439 (FAA)

25163

APP CRS	Rwy Ldg	5700
005°	TDZE	6757
	Apt Elev	6763

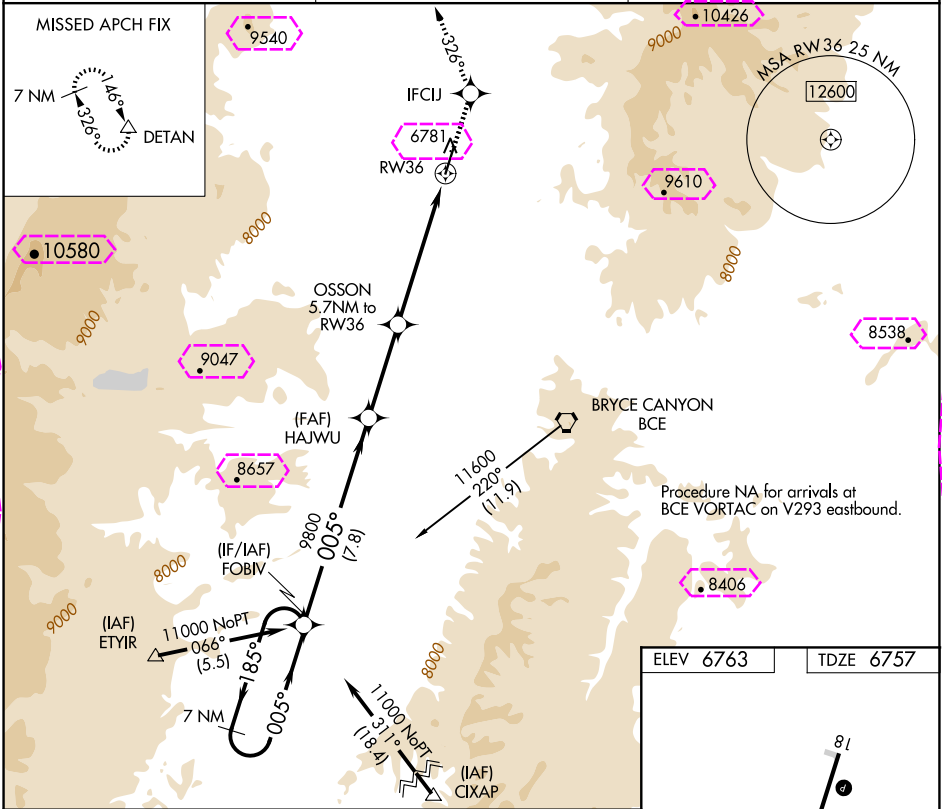
RNAV (GPS) RWY 36

PANGUITCH MUNI (U55)

T DME/DME RNP-0.3 NA. When local altimeter setting not received use Bryce Canyon altimeter setting and increase all MDA 160 feet.
A -28°C VDP NA with Bryce Canyon altimeter setting.

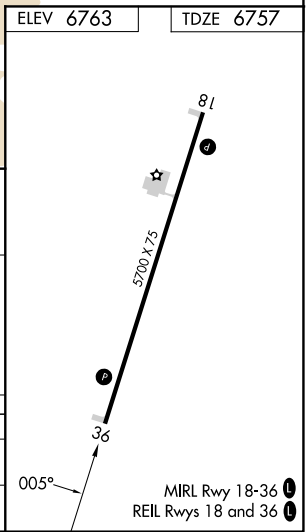
MISSED APPROACH: Climb to 12000 direct IFCU and on track 326° to DETAN and hold.

AWOS-3 133.125	SALT LAKE CENTER 133.6 269.25	CTAF 122.9
-------------------	----------------------------------	---------------



VGSI and descent angles not coincident (VGSI Angle 3.00/TCH 40).

7 NM Holding Pattern	FOBIV	HAJWU	OSSON 5.7 NM to RW36	IFCU	DETAN
11000	185°	005°	3.06° TCH 40	tr 326°	△
7.8 NM	3.5 NM	2.2 NM	3.5 NM		
CATEGORY	A	B	C	D	
LNVA MDA	7900-1¼ 1143 (1200-1¼)	7900-1½ 1143 (1200-1½)	NA	NA	
CIRCLING	7900-1¼ 1137 (1200-1¼)	7900-1½ 1137 (1200-1½)	NA	NA	



SW-4, 10 JUL 2025 to 07 AUG 2025

SW-4, 10 JUL 2025 to 07 AUG 2025

PANGUITCH, UTAH
Orig-A 23APR20

37°51'N-112°24'W

PANGUITCH MUNI (U55)
RNAV (GPS) RWY 36

PANGUITCH, UTAH

AL-9439 (FAA)

25219

APP CRS	Rwy Ldg	5700
005°	TDZE	6757
	Apt Elev	6763

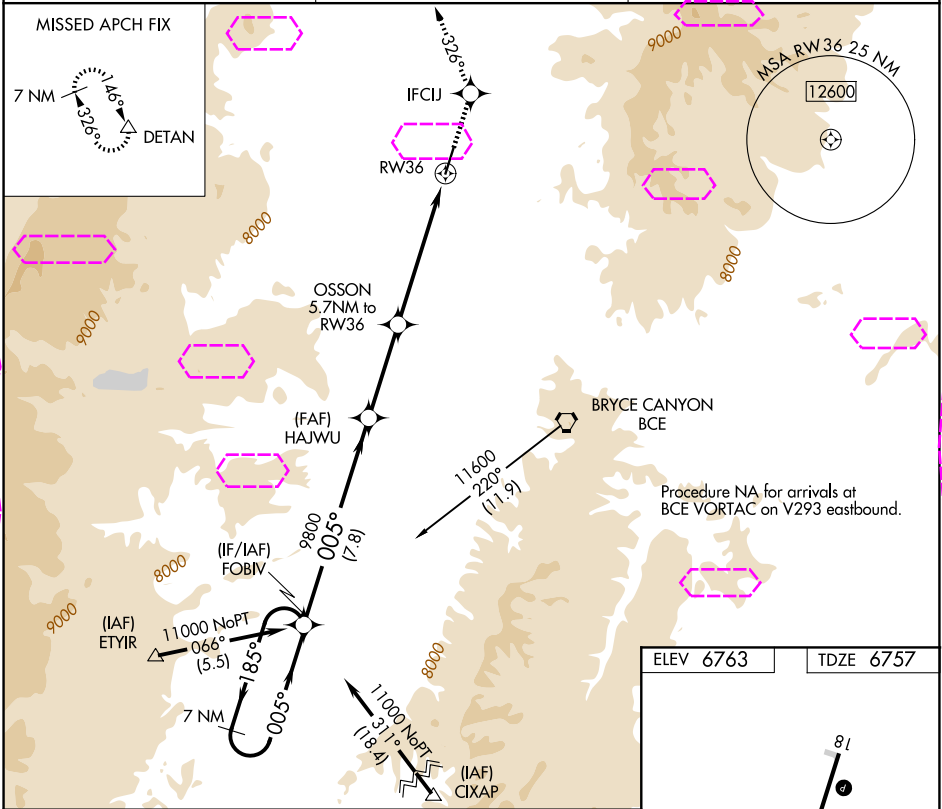
RNAV (GPS) RWY 36

PANGUITCH MUNI (U55)

T DME/DME RNP-0.3 NA. When local altimeter setting not received use Bryce Canyon altimeter setting and increase all MDA 160 feet.
A -27°C VDP NA with Bryce Canyon altimeter setting.

MISSED APPROACH: Climb to 12000 direct IFCU and on track 326° to DETAN and hold.

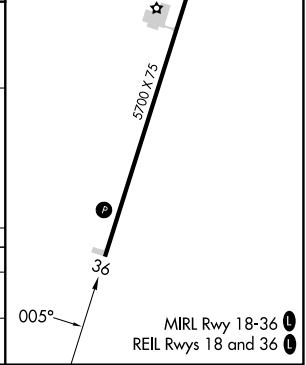
AWOS-3 133.125	SALT LAKE CENTER 133.6 269.25	CTAF 122.9
-------------------	----------------------------------	---------------



VGSI and descent angles not coincident (VGSI Angle 3.00/TCH 40).

7 NM Holding Pattern	FOBIV	HAJWU	OSSON 5.7 NM to RW36	IFCU	DETAN
11000	185°	005°	9800	12000	326°
			8640		
	7.8 NM	3.5 NM	2.2 NM	3.5 NM	

CATEGORY	A	B	C	D
LNNAV MDA	7900-1¼ 1143 (1200-1¼)	7900-1½ 1143 (1200-1½)	NA	
CIRCLING	7900-1¼ 1137 (1200-1¼)	7900-1½ 1137 (1200-1½)	NA	



PANGUITCH, UTAH
Orig-A 23APR20

37°51'N-112°24'W

RNAV (GPS) RWY 36

PANGUITCH MUNI (U55)

SW-4, 07 AUG 2025 to 04 SEP 2025

SW-4, 07 AUG 2025 to 04 SEP 2025