

RICHFIELD, UTAH

AL-9434 (FAA)

25163

WAAS CH <b>70537</b> <b>W19A</b>	APP CRS <b>207°</b>	Rwy Ldg TDZE <b>5286</b> Apt Elev <b>5318</b>
--	------------------------	---

# RNAV (GPS) RWY 19

RICHFIELD MUNI (RIF')

RNP APCH-GPS.

▼ Rwy 19 helicopter visibility reduction below  $\frac{3}{4}$  SM NA. When local altimeter setting not received, procedure NA.

⚠ NA

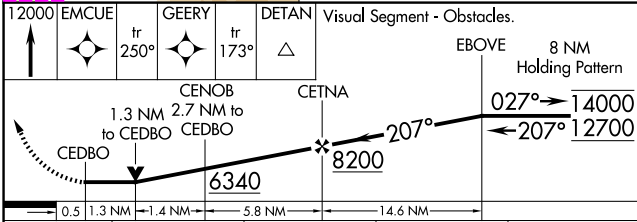
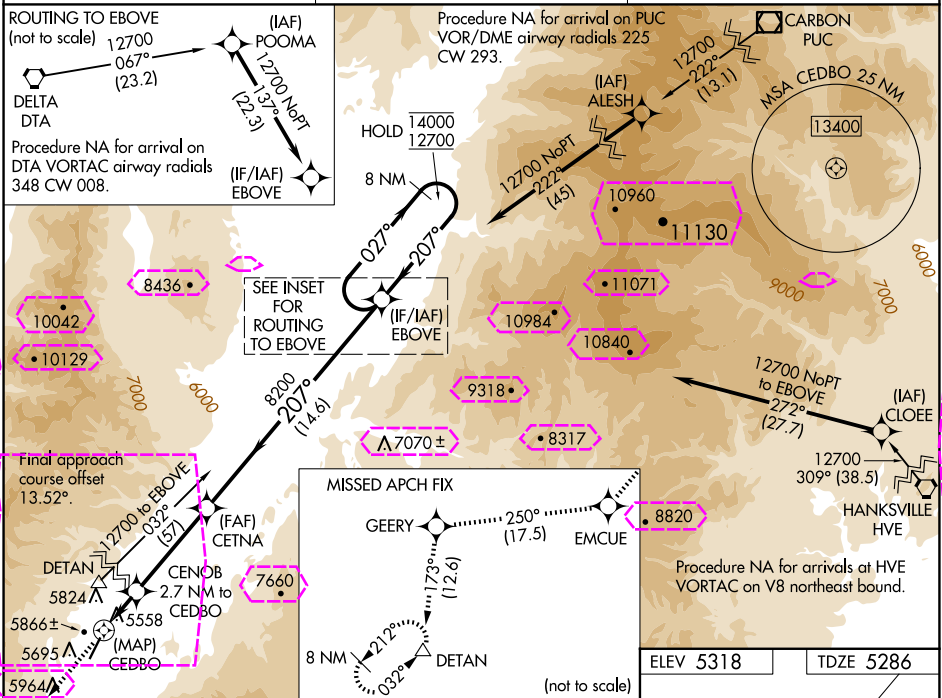
⚠ -12°C

MISSED APPROACH: Climb to 12000 direct EMCUE, and track 250° to GEERY, and track 173° to DETAN and hold.

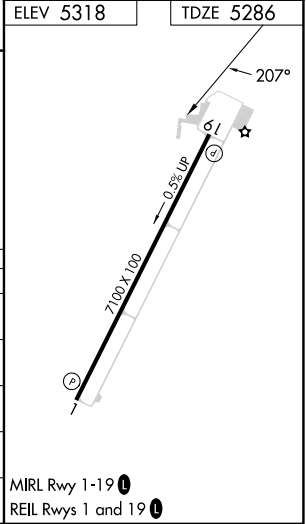
\* Missed approach requires minimum climb of 380 feet per NM to 9600.

# Missed approach requires minimum climb of 390 feet per NM to 9600.

AWOS-3 <b>133.375</b>	SALT LAKE CITY CENTER <b>125.575 379.275</b>	UNICOM <b>122.8 (CTAF) 0</b>
--------------------------	---	---------------------------------



CATEGORY	A	B	C	D
LP MDA*	5880-1	594 (600-1)	5880-1 $\frac{3}{4}$ 594 (600-1 $\frac{3}{4}$ )	NA
LP MDA	7340-1 $\frac{1}{4}$ 2054 (2100-1 $\frac{1}{4}$ )	7340-1 $\frac{1}{2}$ 2054 (2100-1 $\frac{1}{2}$ )	7340-3 2054 (2100-3)	NA
LNAV MDA#	6340-1 $\frac{1}{4}$ 1054 (1100-1 $\frac{1}{4}$ )	6340-1 $\frac{1}{2}$ 1054 (1100-1 $\frac{1}{2}$ )	6340-3 1054 (1100-3)	NA
LNAV MDA	7440-1 $\frac{1}{4}$ 2154 (2200-1 $\frac{1}{4}$ )	7440-1 $\frac{1}{2}$ 2154 (2200-1 $\frac{1}{2}$ )	7440-3 2154 (2200-3)	NA
CIRCLING	7440-1 $\frac{1}{4}$ 2122 (2200-1 $\frac{1}{4}$ )	7440-1 $\frac{1}{2}$ 2122 (2200-1 $\frac{1}{2}$ )	7440-3 2122 (2200-3)	NA



RICHFIELD, UTAH  
Amdt 1D 06OCT22

38°44'N-112°06'W

RICHFIELD MUNI (RIF')  
RNAV (GPS) RWY 19

RICHFELD, UTAH

AL-9434 (FAA)

25219

WAAS CH <b>70537</b> <b>W19A</b>	APP CRS <b>207°</b>	Rwy Ldg TDZE Apt Elev	<b>7100</b> <b>5286</b> <b>5318</b>
--	------------------------	-----------------------------	---

# RNAV (GPS) RWY 19

RICHFELD MUNI (RIF')

RNP APCH-GPS.

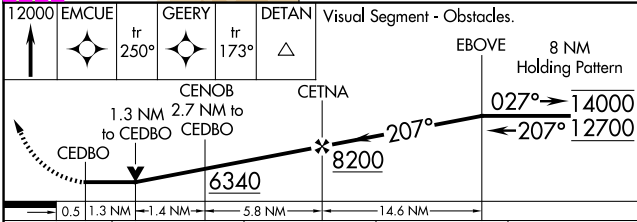
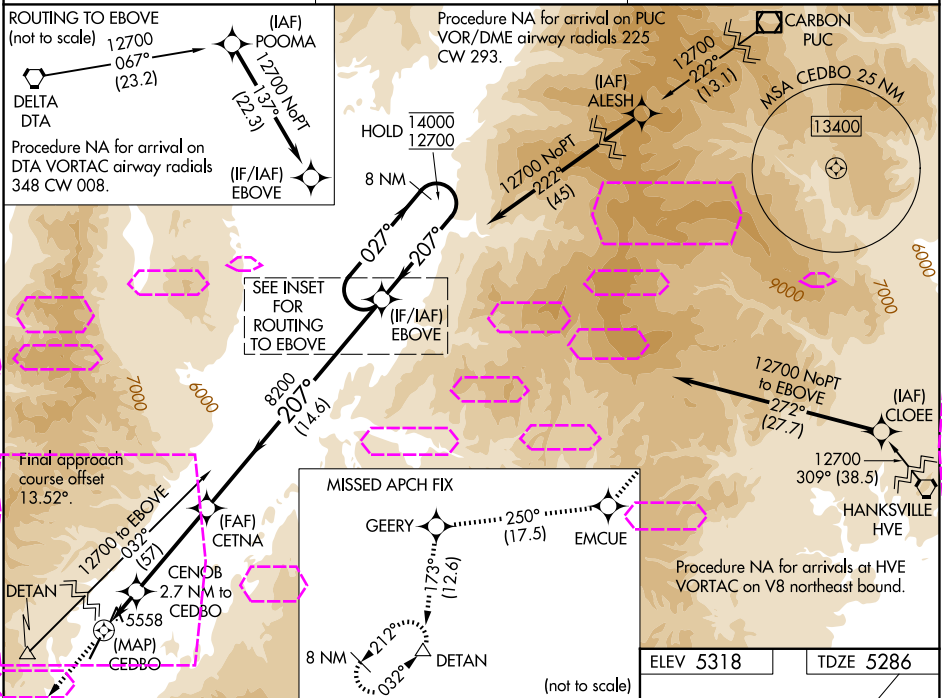
⚠ Rwy 19 helicopter visibility reduction below 3/4 SM NA. When local altimeter setting not received, procedure NA.

MISSED APPROACH: Climb to 12000 direct EMCUE, and track 250° to GEERY, and track 173° to DETAN and hold.

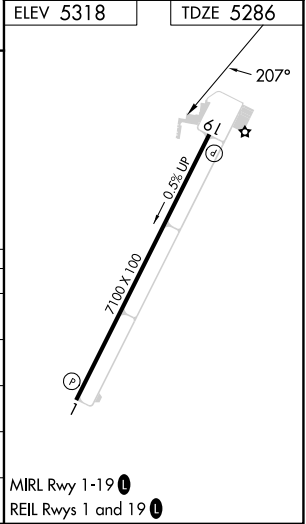
\* Missed approach requires minimum climb of 380 feet per NM to 9600.

# Missed approach requires minimum climb of 390 feet per NM to 9600.

AWOS-3 <b>133.375</b>	SALT LAKE CITY CENTER <b>125.575 379.275</b>	UNICOM <b>122.8 (CTAF) 0</b>
--------------------------	---	---------------------------------



CATEGORY	A	B	C	D
LP MDA*	5880-1	594 (600-1)	5880-1 5/4 594 (600-1 3/4)	NA
LP MDA	7340-1 1/4 2054 (2100-1 1/4)	7340-1 1/2 2054 (2100-1 1/2)	7340-3 2054 (2100-3)	NA
LNAV MDA#	6340-1 1/4 1054 (1100-1 1/4)	6340-1 1/2 1054 (1100-1 1/2)	6340-3 1054 (1100-3)	NA
LNAV MDA	7440-1 1/4 2154 (2200-1 1/4)	7440-1 1/2 2154 (2200-1 1/2)	7440-3 2154 (2200-3)	NA
CIRCLING	7440-1 1/4 2122 (2200-1 1/4)	7440-1 1/2 2122 (2200-1 1/2)	7440-3 2122 (2200-3)	NA



RICHFELD, UTAH

Amdt 1D 06OCT22

38°44'N-112°06'W

RICHFELD MUNI (RIF')

# RNAV (GPS) RWY 19

SW-4, 07 AUG 2025 to 04 SEP 2025

SW-4, 07 AUG 2025 to 04 SEP 2025