

ELLENVILLE, NEW YORK

AL-9390 (FAA)

24081

APP CRS	Rwy Idg	3530
227°	TDZE	289
	Apt Elev	290

RNAV (GPS) RWY 22

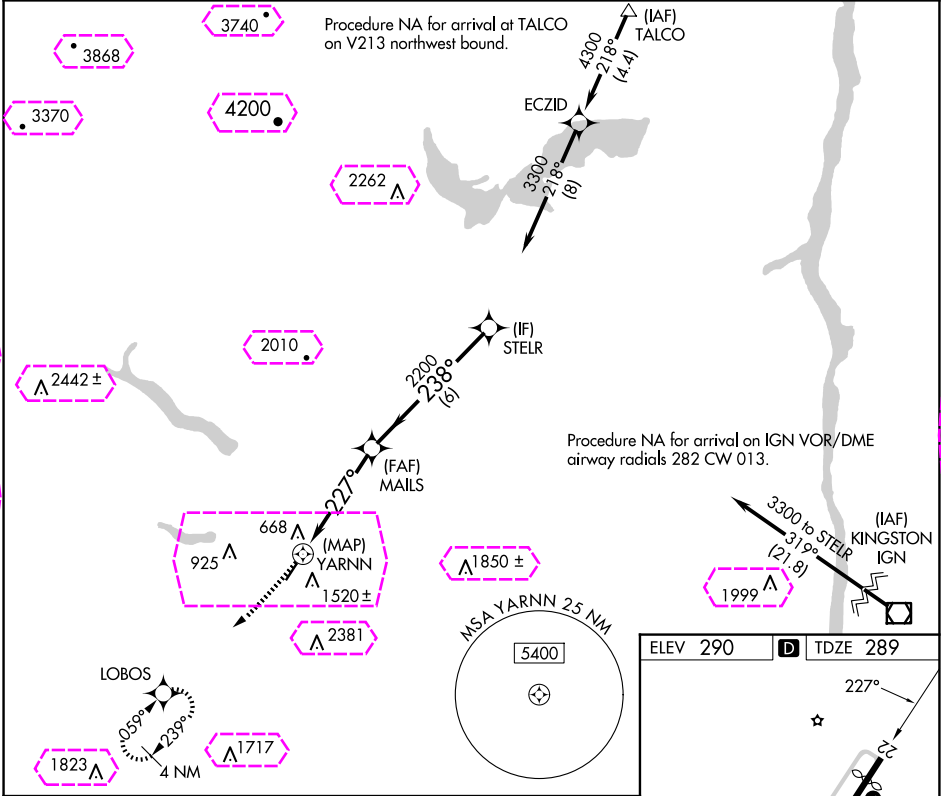
JOSEPH Y RESNICK (N89)

RNP APCH - GPS.

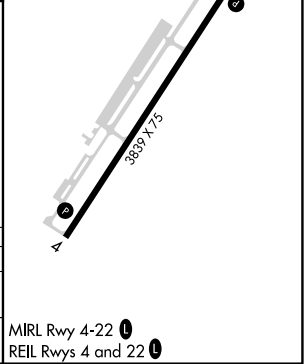
NA Circling NA southeast of Rwy 4-22. Procedure NA at night. Rwy 22 helicopter visibility reduction below 1 SM NA. Use New York Stewart Intl altimeter setting, when not received, use Poughkeepsie altimeter setting.

MISSED APPROACH: Climbing right turn to 4000 direct LOBOS and hold, continue climb-in-hold to 4000.

SWF ASOS 124.575	NEW YORK APP CON 132.75 363.1	UNICOM 122.8 (CTAF)
---------------------	----------------------------------	------------------------



4000	LOBOS	Visual Segment - Obstacles.			
CATEGORY	A	B	C	D	
LNAV MDA	1980-1¼ 1691 (1700-1¼)	1980-1½ 1691 (1700-1½)	NA		
CIRCLING	1980-1¼ 1690 (1700-1¼)	1980-1½ 1690 (1700-1½)	NA		



ELLENVILLE, NEW YORK
Orig-B 21MAR24

41°44'N-74°23'W

RNAV (GPS) RWY 22

JOSEPH Y RESNICK (N89)

ELLENVILLE, NEW YORK

AL-9390 (FAA)

25219

APP CRS	Rwy Ldg	3530
227°	TDZE	289
	Apt Elev	290

RNAV (GPS) RWY 22

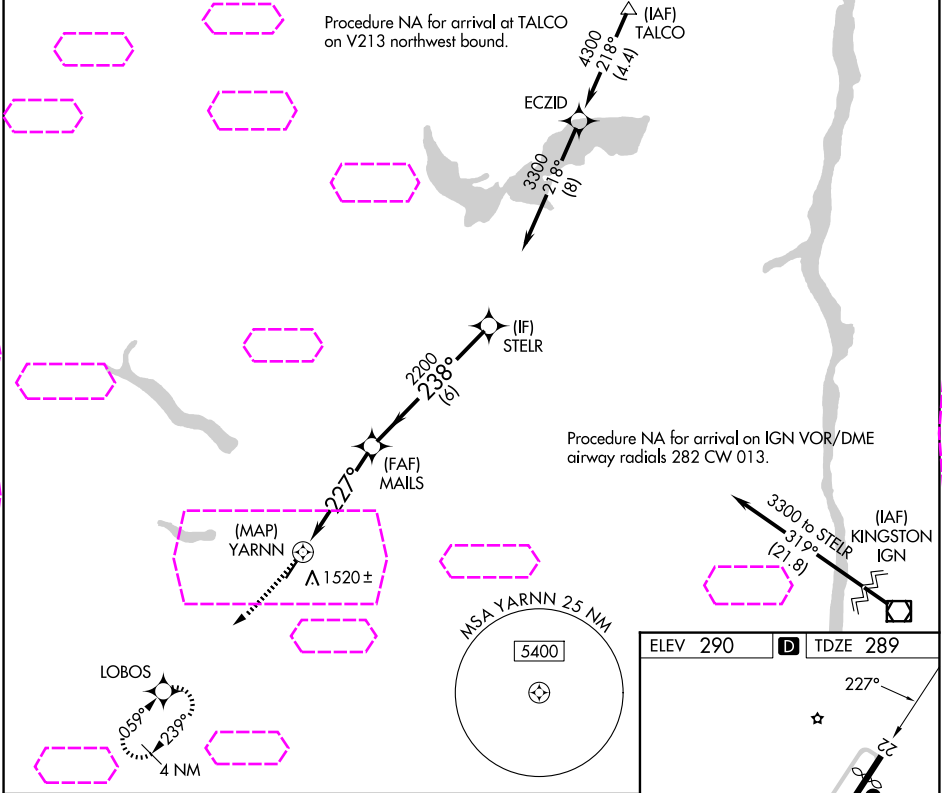
JOSEPH Y RESNICK (N89)

RNP APCH - GPS.

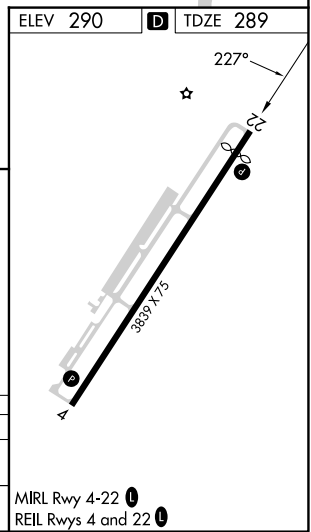
NA Circling NA southeast of Rwy 4-22. Procedure NA at night. Rwy 22 helicopter visibility reduction below 1 SM NA. Use New York Stewart Intl altimeter setting, when not received, use Poughkeepsie altimeter setting.

MISSED APPROACH: Climbing right turn to 4000 direct LOBOS and hold, continue climb-in-hold to 4000.

SWF ASOS 124.575	NEW YORK APP CON 132.75 363.1	UNICOM 122.8 (CTAF)
---------------------	----------------------------------	------------------------



4000	LOBOS	Visual Segment - Obstacles.			
CATEGORY	A		B		D
LNAV MDA	1980-1¼ 1691 (1700-1¼)		1980-1½ 1691 (1700-1½)		NA
CIRCLING	1980-1¼ 1690 (1700-1¼)		1980-1½ 1690 (1700-1½)		NA



ELLENVILLE, NEW YORK
Orig-B 21MAR24

41°44'N-74°23'W

RNAV (GPS) RWY 22

JOSEPH Y RESNICK (N89)

NE-2, 07 AUG 2025 to 04 SEP 2025

NE-2, 07 AUG 2025 to 04 SEP 2025