

NE-4, 10 JUL 2025 to 07 AUG 2025

LOGAN, WEST VIRGINIA

AL-9378 (FAA)

25219

WAAS CH 70431 W24A	APP CRS 245°	Rwy Ldg TDZE 1666 Apt Elev 1666
--	------------------------	---

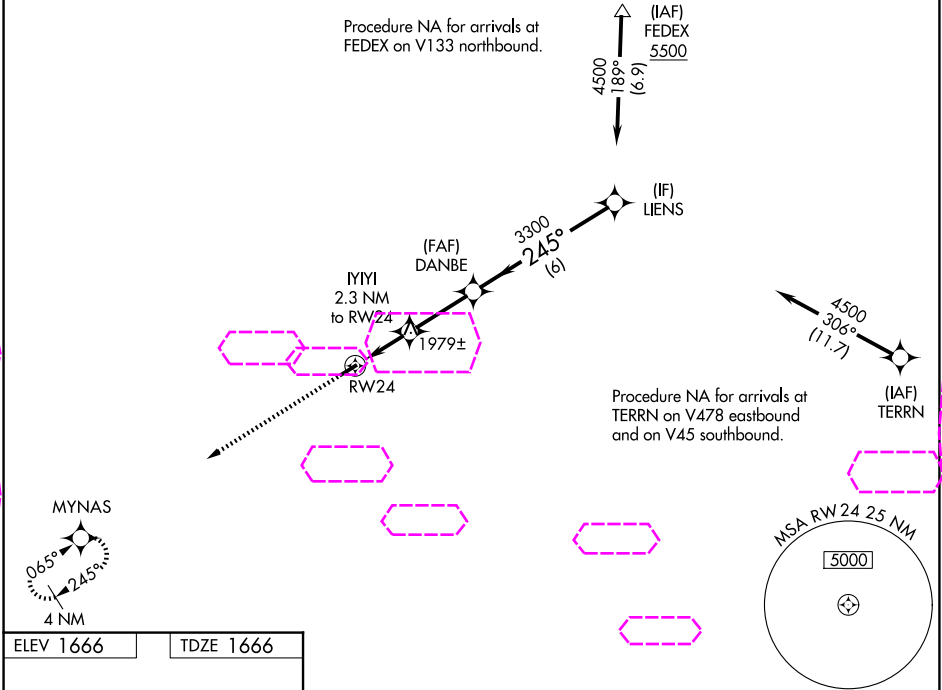
RNAV (GPS) RWY 24

LOGAN COUNTY (6L4)

⚠ For uncompensated Baro-VNAV systems, LNAV/VNAV NA below -18°C (0°F) or above 54°C (130°F). Baro-VNAV and VDP NA when using Pineville altimeter setting. DME/DME RNP-0.3 NA.
⚠ When local altimeter setting not received, use Pineville altimeter setting: increase LPV DA to 1985 feet and all visibilities ½ SM; increase LNAV/VNAV DA to 1988 feet and all visibilities ¼ SM; increase all MDA 80 feet and LNAV Cat C visibility and Circling Cat B visibility ¼ SM.

MISSED APPROACH: Climb to 3800 direct MYNAS and hold.

AWOS-3PT 119.375	CHARLESTON APP CON 119.2 269.125	CTAF 122.9
----------------------------	--	-------------------



ELEV 1666 TDZE 1666

3800 MYNAS

245°

3605 X.75

0.3% UP

REIL Rwy 6 and 24

MIRL Rwy 6-24

* LNAV only.

RW24

IYIYI 2.3 NM to RW24

DANBE 3300

LIENS 4500

GP 3.00° TCH 42

1.7 NM

0.6

2.7 NM

6 NM

CATEGORY	A	B	C	D
LPV DA	1916-7/8	250 (300-7/8)		NA
LNAV/VNAV DA	1919-7/8	253 (300-7/8)		NA
LNAV MDA	2240-1	574 (600-1)	2240-1 5/8 574 (600-1 5/8)	NA
CIRCLING	2360-1 694 (700-1)	2400-1 734 (800-1)	2720-3 1054 (1100-3)	NA

LOGAN, WEST VIRGINIA

Amdt 1 20JUL17

37°51'N-81°55'W

LOGAN COUNTY (6L4)

RNAV (GPS) RWY 24