

JONESVILLE, VIRGINIA

AL-9373 (FAA)

24305

| | | | |
|--|------------------------|-----------------------------|---|
| WAAS CH 78430 W07A | APP CRS 066° | Rwy Idg TDZE Apt Elev | 5003 1393 1411 |
|--|------------------------|-----------------------------|---|

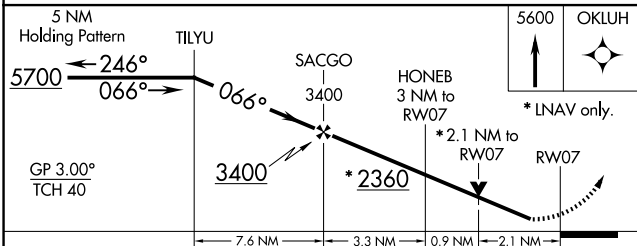
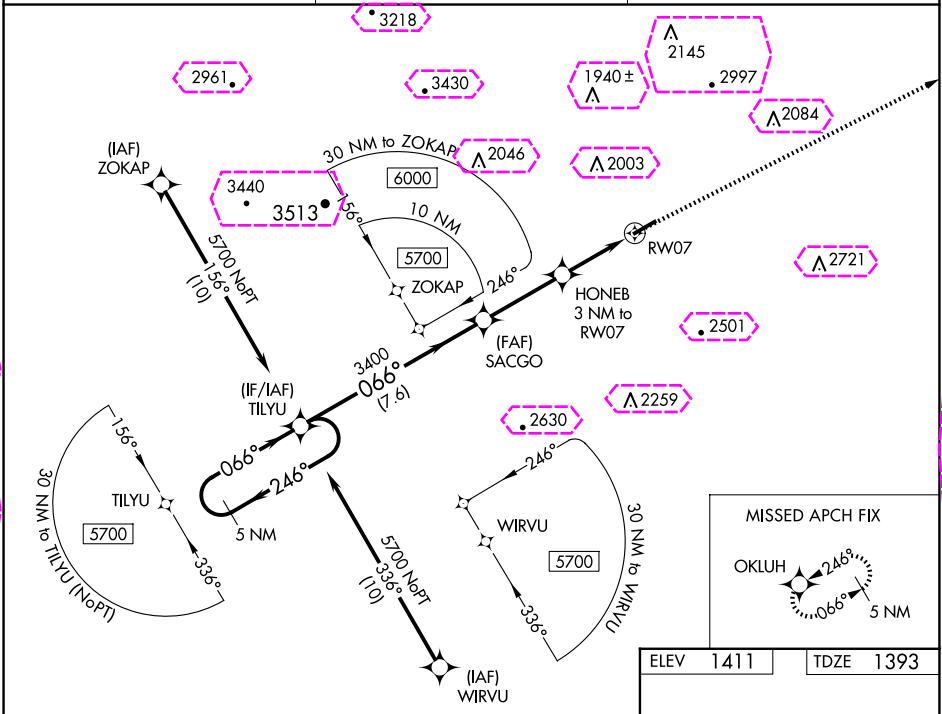
RNAV (GPS) RWY 7

LEE COUNTY (ØVG)

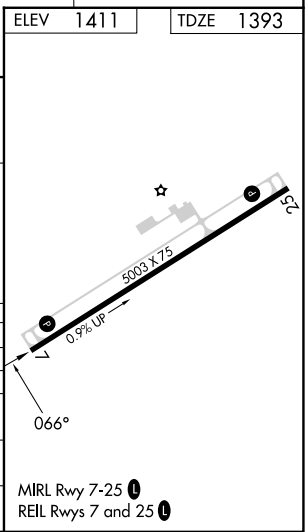
▽ DME/DME RNP-0.3 NA. Rwy 07 helicopter visibility reduction below ¾ SM NA.
▲ ** Missed approach requires minimum climb gradient of 240 feet per NM to 3400.

MISSED APPROACH: Climb to 5600 direct OKLUH and hold, continue climb-in-hold to 5600.

| | | |
|--------------------------|--|------------------------|
| AWOS-3 120.125 | ATLANTA CENTER 127.55 269.50 | CTAF 122.9 0 |
|--------------------------|--|------------------------|



| CATEGORY | A | B | C | D |
|-----------------|-----------------------|-----------------------|-------------------------|----|
| LPV DA | ** 1643-1 | 250 (300-1) | | NA |
| LPV DA | 1881-1¾ | 488 (500-1¾) | | NA |
| LNAV/VNAV DA | 2024-2½ | 631 (700-2½) | | NA |
| LNAV MDA | 2080-1 | 687 (700-1) | 2080-1¾ 687 (700-1¾) | NA |
| CIRCLING | 2140-1 729 (800-1) | 2180-1 769 (800-1) | 2600-3 1189 (1200-3) | NA |



JONESVILLE, VIRGINIA
Amdt 2 02MAR17

36°39'N-83°13'W

RNAV (GPS) RWY 7

LEE COUNTY (ØVG)

JONESVILLE, VIRGINIA

AL-9373 (FAA)

25219

| | | |
|--|------------------------|---|
| WAAS CH 78430 W07A | APP CRS 066° | Rwy Ldg TDZE 1393 Apt Elev 1411 |
|--|------------------------|---|

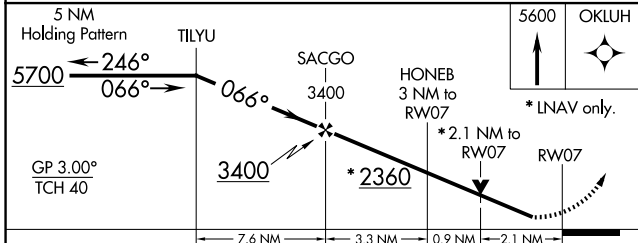
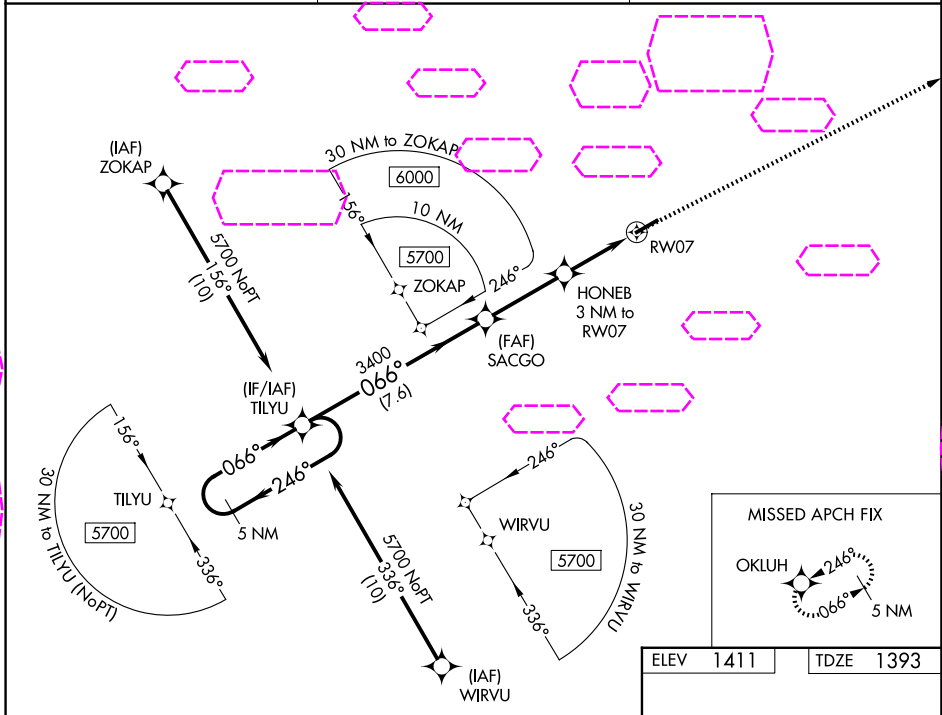
RNAV (GPS) RWY 7

LEE COUNTY (ØVG)

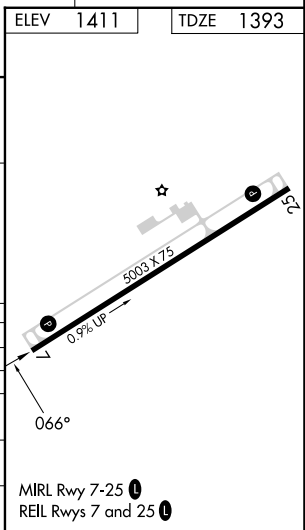
- ▼ DME/DME RNP-0.3 NA. Rwy 07 helicopter visibility reduction below ¾ SM NA.

▲ ** Missed approach requires minimum climb gradient of 240 feet per NM to 3400.
- MISSED APPROACH: Climb to 5600 direct OKLUH and hold, continue climb-in-hold to 5600.

| | | |
|--------------------------|--|------------------------|
| AWOS-3 120.125 | ATLANTA CENTER 127.55 269.50 | CTAF 122.9 0 |
|--------------------------|--|------------------------|



| CATEGORY | A | B | C | D |
|--------------|-----------------------|-----------------------|-------------------------|----|
| LPV DA | **1643-1 | 250 (300-1) | | NA |
| LPV DA | 1881-1¾ | 488 (500-1¾) | | NA |
| LNAV/VNAV DA | 2024-2½ | 631 (700-2½) | | NA |
| LNAV MDA | 2080-1 | 687 (700-1) | 2080-1¾ 687 (700-1¾) | NA |
| CIRCLING | 2140-1 729 (800-1) | 2180-1 769 (800-1) | 2600-3 1189 (1200-3) | NA |



JONESVILLE, VIRGINIA
Amdt 2 02MAR17

36°39'N-83°13'W

RNAV (GPS) RWY 7

LEE COUNTY (ØVG)