

JONESVILLE, VIRGINIA

AL-9373 (FAA)

24305

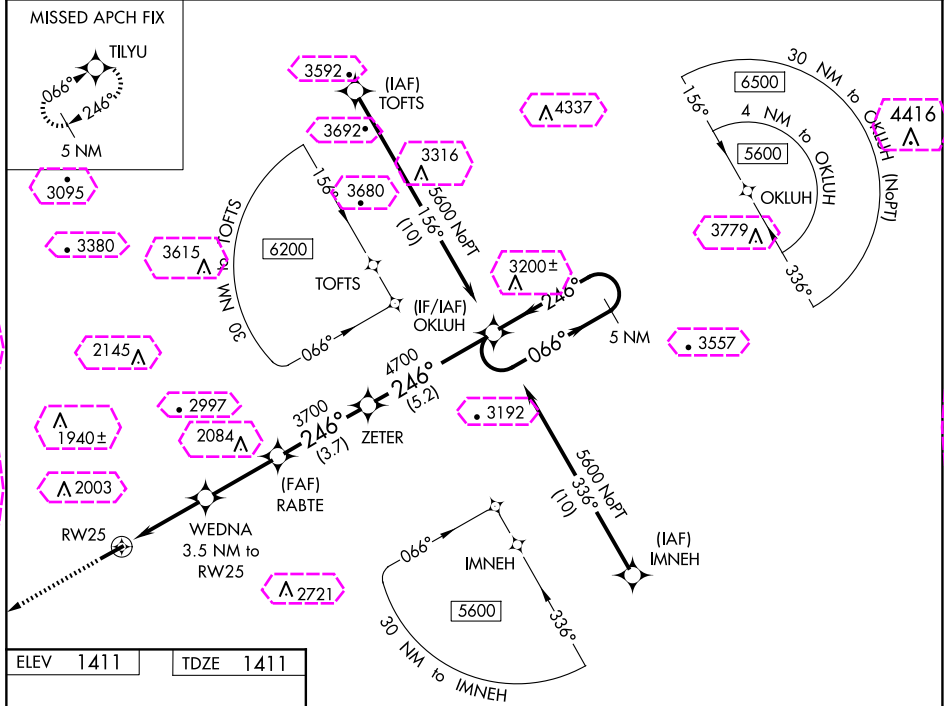
WAAS CH <b>82717</b> <b>W25A</b>	APP CRS <b>246°</b>	Rwy Idg TDZE Apt Elev <b>5003</b> <b>1411</b> <b>1411</b>
--	------------------------	--

# RNAV (GPS) RWY 25

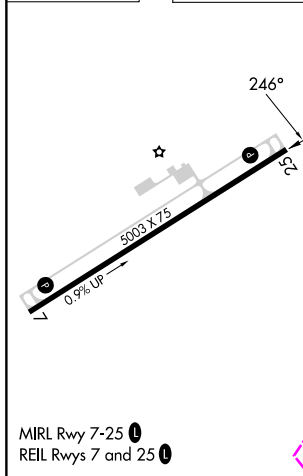
LEE COUNTY (ØVG)

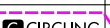
 Helicopter visibility reduction below ¾ SM NA. DME/DME RNP-0.3 NA.	MISSED APPROACH: Climb to 5000 direct TILYU and hold, continue climb-in-hold to 5000.
---	---

AWOS-3 <b>120.125</b>	ATLANTA CENTER <b>127.55 269.50</b>	CTAF <b>122.90</b>
--------------------------	--	-----------------------



ELEV 1411	TDZE 1411
-----------	-----------



5000	TILYU	VGSI and RNAV glidepath not coincident (VGSI Angle 3.25/TCH 44).			5 NM Holding Pattern
* LNAV only	WEDNA 3.5 NM to RW25	RABTE 3700	ZETER	OKLUH	
* 2.2 NM to RW25		3700	246°	066° → ← 246°	5600
RW25		*2580	4700		GP 3.25° TCH 58
2.2 NM	1.3	3.0 NM	3.7 NM	5.2 NM	
CATEGORY	A		B	C	D
LPV DA	1714-1		303 (400-1)		NA
LNAV/ VNAV	2284-3		873 (900-3)		NA
LNAV MDA	2220-1 809 (900-1)	2220-1¼ 809 (900-1¼)	2220-2½ 809 (900-2½)		NA
 CIRCLING	2220-1	809 (900-1)	2600-3 1189 (1200-3)		NA

JONESVILLE, VIRGINIA  
Amdt 2 02MAR17

36°39'N-83°13'W

# RNAV (GPS) RWY 25

LEE COUNTY (ØVG)

JONESVILLE, VIRGINIA

AL-9373 (FAA)

25219

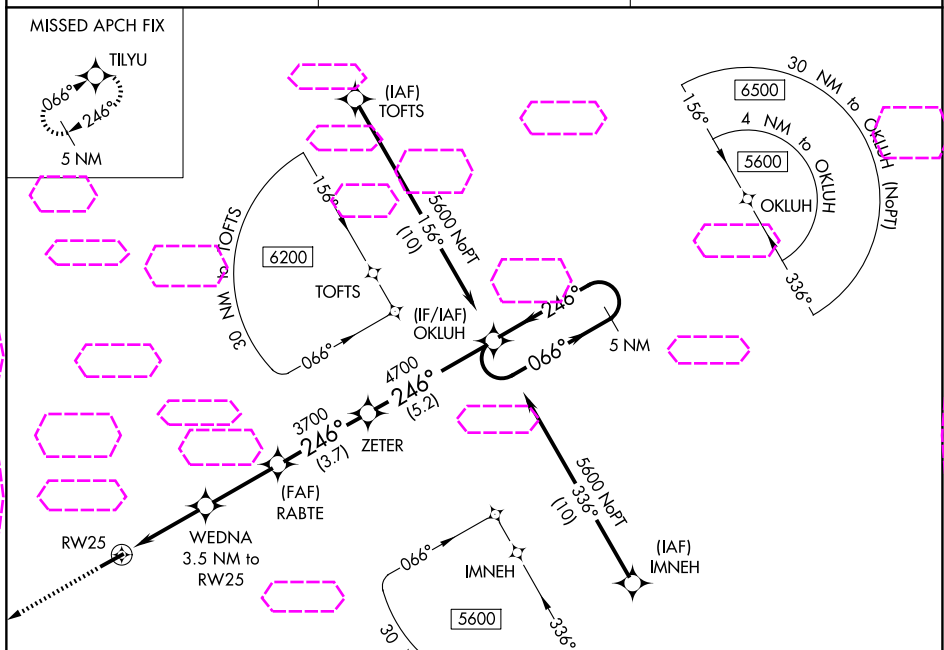
WAAS CH <b>82717</b> <b>W25A</b>	APP CRS <b>246°</b>	Rwy Ldg TDZE Apt Elev <b>5003</b> <b>1411</b> <b>1411</b>
--	------------------------	--

# RNAV (GPS) RWY 25

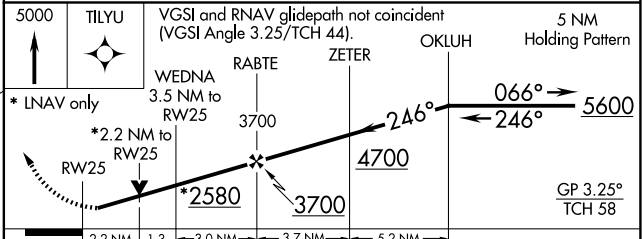
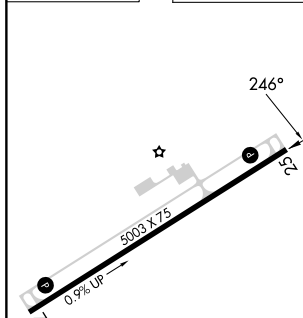
LEE COUNTY (ØVG)

 Helicopter visibility reduction below ¾ SM NA. DME/DME RNP-0.3 NA.	MISSED APPROACH: Climb to 5000 direct TILYU and hold, continue climb-in-hold to 5000.
---	---

AWOS-3 <b>120.125</b>	ATLANTA CENTER <b>127.55 269.50</b>	CTAF <b>122.90</b>
--------------------------	--	-----------------------



ELEV <b>1411</b>	TDZE <b>1411</b>
------------------	------------------



CATEGORY	A	B	C	D
LPV DA	1714-1	303 (400-1)		NA
RNAV/ VNAV DA	2284-3	873 (900-3)		NA
RNAV MDA	2220-1 809 (900-1)	2220-1¼ 809 (900-1¼)	2220-2½ 809 (900-2½)	NA
CIRCLING	2220-1	809 (900-1)	2600-3 1189 (1200-3)	NA

JONESVILLE, VIRGINIA

Amdt 2 02MAR17

36°39'N-83°13'W

LEE COUNTY (ØVG)

# RNAV (GPS) RWY 25