

SANDUSKY COUNTY RGNL (S24)
RNAV (GPS) RWY 6

FREMONT, OHIO

AL-9372 (FAA)

25219

WAAS CH 63022 W06A	APP CRS 067°	Rwy Ldg 5500 TDZE 665 Apt Elev 665
--	------------------------	---

RNAV (GPS) RWY 6
SANDUSKY COUNTY RGNL (S24)

RNP APCH - GPS.

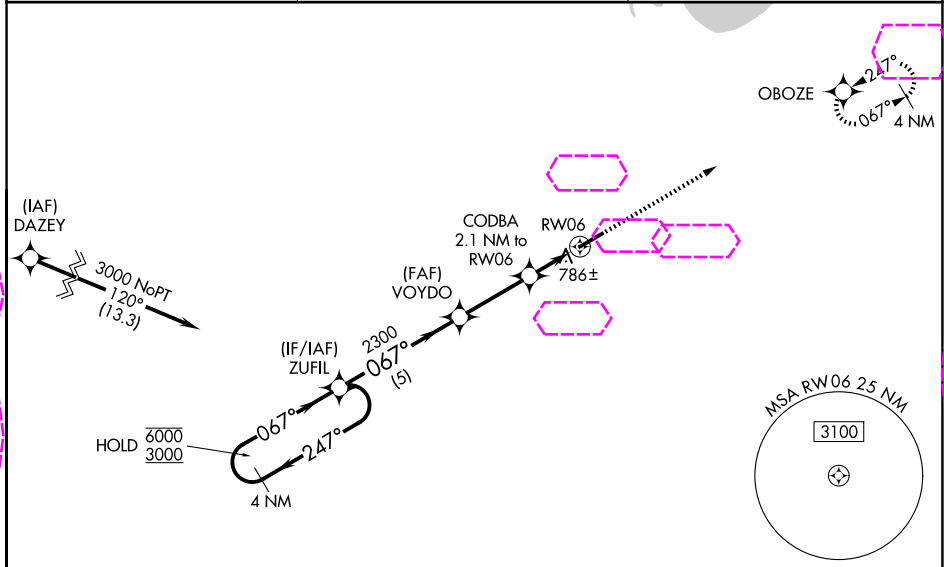
⚠ Baro-VNAV and VDP NA when using TOL altimeter setting. For uncompensated Baro-VNAV systems, LNAV/VNAV NA below -16°C or above 54°C. When local altimeter setting not received, use TOL altimeter setting: increase LPV DA to 1008 feet and all visibilities $\frac{3}{8}$ SM; increase LNAV/VNAV DA to 1041 feet and all visibilities $\frac{3}{8}$ SM; increase all MDA 100 feet and LNAV visibility Cat C and D $\frac{3}{8}$ SM and Circling visibility Cat C and D $\frac{1}{2}$ SM.

MISSED APPROACH:
Climb to 3000 direct
OBOZE and hold.

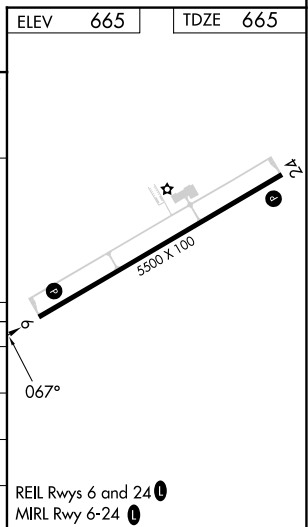
AWOS-3P
119.575

TOLEDO APP CON
126.1 307.0

UNICOM
123.05 (CTAF) 0



4 NM Holding Pattern		ZUFIL		VOYDO 2300		CODBA 2.1 NM to RW06		3000 ↑		OBOZE ✦	
6000 ← 247° 3000 → 067°		067°		2300		1360		1 NM to RW06		RW06	
GP 3.00° TCH 44		5 NM		2.9 NM		1.1 NM		1 NM			
CATEGORY		A		B		C		D			
LPV DA				915- ³ / ₄		250 (300- ³ / ₄)					
LNAV/ VNAV DA				948- ⁷ / ₈		283 (300- ⁷ / ₈)					
LNAV MDA				1040-1		375 (400-1)					
CIRCLING		1120-1 455 (500-1)		1160-1 495 (500-1)		1380-2 715 (800-2)		1380-2 ¹ / ₄ 715 (800-2 ¹ / ₄)			



FREMONT, OHIO
Amdt 1C 12JUN25

41°18'N-83°02'W

SANDUSKY COUNTY RGNL (S24)
RNAV (GPS) RWY 6