

FREMONT, OHIO

AL-9372 (FAA)

25163

WAAS CH 42822 W24A	APP CRS 247°	Rwy Idg TDZE 665 Apt Elev 665
----------------------------------------	------------------------	---------------------------------------------------

RNAV (GPS) RWY 24

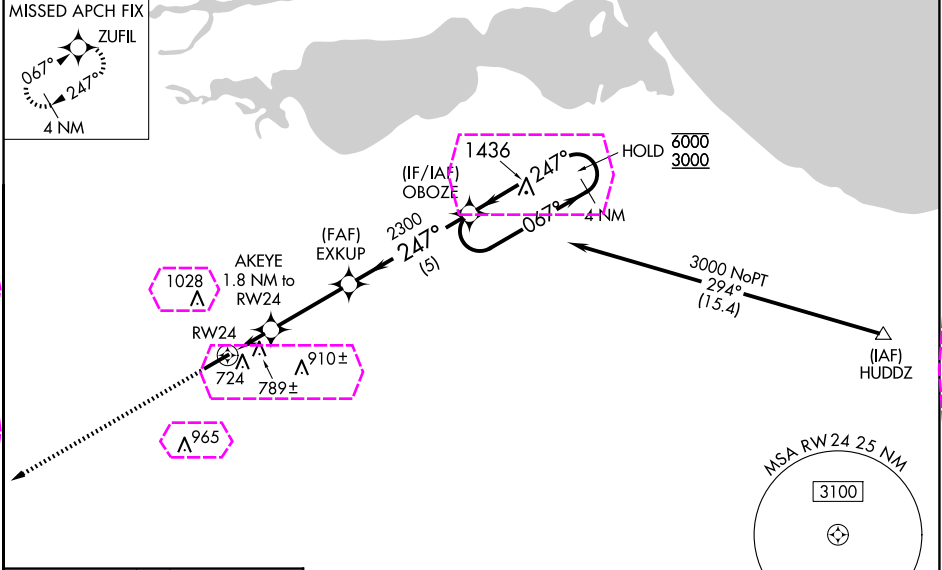
SANDUSKY COUNTY RGNL (S24)

RNP APCH - GPS.

Baro-VNAV and VDP NA when using TOL altimeter setting. For uncompensated Baro-VNAV systems, procedure NA below -16°C or above 54°C. When local altimeter setting not received, use TOL altimeter setting: increase LPV DA to 978 feet and all visibilities ¾ SM; increase LNAV/VNAV DA to 1196 feet and all visibilities ¾ SM; increase all MDA 100 feet and LNAV visibility Cat C and D ¼ SM and Circling visibility Cat C and D ½ SM.

MISSED APPROACH:
Climb to 3000 direct
ZUFIL and hold.

AWOS-3P 119.575	TOLEDO APP CON 126.1 307.0	UNICOM 123.05 (CTAF) 0
---------------------------	--------------------------------------	----------------------------------



ELEV 665	TDZE 665
----------	----------

3000

ZUFIL

3000

ZUFIL

AKEYE

1.8 NM to RW24

EXKUP

2300

OBOZE

4 NM Holding Pattern

1.1 NM

0.7 NM

3.2 NM

5 NM

1260

2300

6000

3000

GP 3.00°

TCH 42

CATEGORY	A	B	C	D
LPV DA	885-¾ 220 (300-¾)			
LNAV/VNAV DA	1103-1½ 438 (500-1½)			
LNAV MDA	1040-1	375 (400-1)	1040-1⅛	375 (400-1⅛)
<div><div></div><div>CIRCLING</div></div>	1120-1 455 (500-1)	1160-1 495 (500-1)	1380-2 715 (800-2)	1380-2¼ 715 (800-2¼)

REIL Rwy 6 and 24 0
MIRL Rwy 6-24 0

FREMONT, OHIO

Amdt 1B 12JUN25

41°18'N-83°02'W

SANDUSKY COUNTY RGNL (S24)

RNAV (GPS) RWY 24

EC-2, 10 JUL 2025 to 07 AUG 2025

EC-2, 10 JUL 2025 to 07 AUG 2025

FREMONT, OHIO

AL-9372 (FAA)

25219

WAAS CH 42822 W24A	APP CRS 247°	Rwy Ldg 5500 TDZE 665 Apt Elev 665
----------------------------------------	------------------------	---------------------------------------------------------------

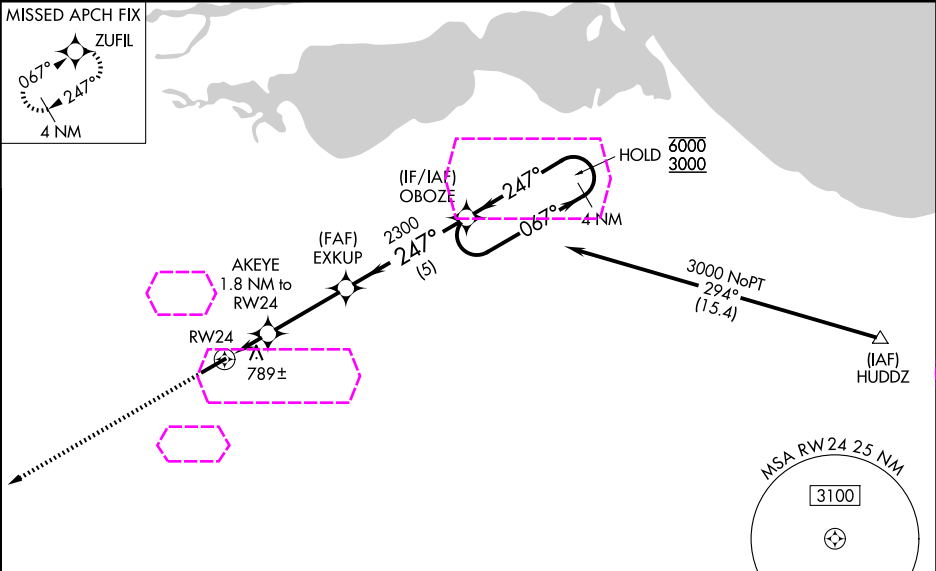
RNAV (GPS) RWY 24
SANDUSKY COUNTY RGNL (S24)

RNP APCH - GPS.

Baro-VNAV and VDP NA when using TOL altimeter setting. For uncompensated Baro-VNAV systems, procedure NA below -16°C or above 54°C. When local altimeter setting not received, use TOL altimeter setting: increase LPV DA to 978 feet and all visibilities $\frac{3}{8}$ SM; increase LNAV/VNAV DA to 1196 feet and all visibilities $\frac{3}{8}$ SM; increase all MDA 100 feet and LNAV visibility Cat C and D $\frac{1}{4}$ SM and Circling visibility Cat C and D $\frac{1}{2}$ SM.

MISSED APPROACH:
Climb to 3000 direct ZUFIL and hold.

AWOS-3P 119.575	TOLEDO APP CON 126.1 307.0	UNICOM 123.05 (CTAF) 0
---------------------------	--------------------------------------	----------------------------------



ELEV 665	TDZE 665
-----------------	-----------------

3000 **ZUFIL**

4 NM **Holding Pattern**

OBOZE

AKEYE 1.8 NM to RW24

EXKUP 2300

RW24 1.1 NM to RW24

GP 3.00°
TCH 42

1.1 NM **0.7 NM** **3.2 NM** **5 NM**

CATEGORY	A	B	C	D
LPV DA	885- $\frac{3}{4}$ 220 (300- $\frac{3}{4}$)			
LNAV/VNAV DA	1103-1 $\frac{1}{2}$ 438 (500-1 $\frac{1}{2}$)			
LNAV MDA	1040-1	375 (400-1)	1040-1 $\frac{1}{8}$	375 (400-1 $\frac{1}{8}$)
CIRCLING	1120-1 455 (500-1)	1160-1 495 (500-1)	1380-2 715 (800-2)	1380-2 $\frac{1}{4}$ 715 (800-2 $\frac{1}{4}$)

REIL Rwy 6 and 24 0
MIRL Rwy 6-24 0

FREMONT, OHIO
Amdt 1B 12JUN25

41°18'N-83°02'W

SANDUSKY COUNTY RGNL (S24)
RNAV (GPS) RWY 24

EC-2, 07 AUG 2025 to 04 SEP 2025