

LAKE PLACID, NEW YORK

AL-9371 (FAA)

25107

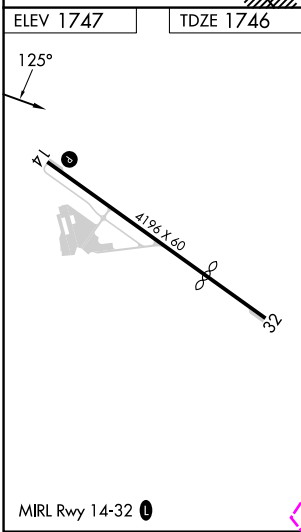
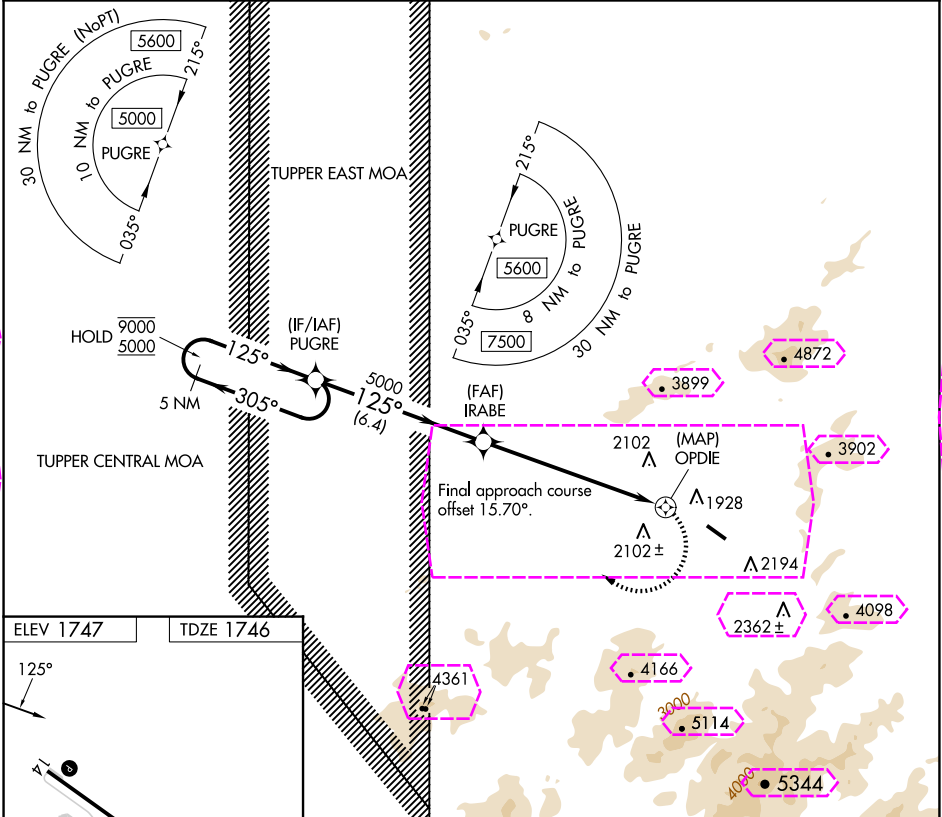
APP CRS	Rwy ldg	4196
125°	TDZE	1746
	Apt Elev	1747

# RNAV (GPS) RWY 14

LAKE PLACID (LKP)

RNP APCH - GPS.		MISSED APPROACH: Climbing right turn to 5000 direct PUGRE and hold.
Rwy 14 helicopter visibility reduction below 1 SM NA.		
Use Saranac Lake altimeter setting. Procedure NA at night.		

AWOS-3PT 118.025	SLK ASOS 124.175	BOSTON CENTER 120.35 342.25	UNICOM 122.8 (CTAF) 0
---------------------	---------------------	--------------------------------	--------------------------



5 NM Holding Pattern		PUGRE	IRABE	5000	PUGRE
9000 ← 305°		125° →	5000		
5000					
		6.4 NM	6.9 NM	1.7	
CATEGORY	A	B	C	D	
LNAV MDA	3080-2	1334 (1400-2)		NA	
CIRCLING	3080-2	1333 (1400-2)		NA	

LAKE PLACID, NEW YORK  
Amdt 1A 03NOV22

44°16'N-73°58'W

# RNAV (GPS) RWY 14

NE-2, 10 JUL 2025 to 07 AUG 2025

NE-2, 10 JUL 2025 to 07 AUG 2025

LAKE PLACID, NEW YORK

AL-9371 (FAA)

25219

APP CRS	Rwy Ldg	4196
125°	TDZE	1746
	Apt Elev	1747

# RNAV (GPS) RWY 14

LAKE PLACID (LKP)

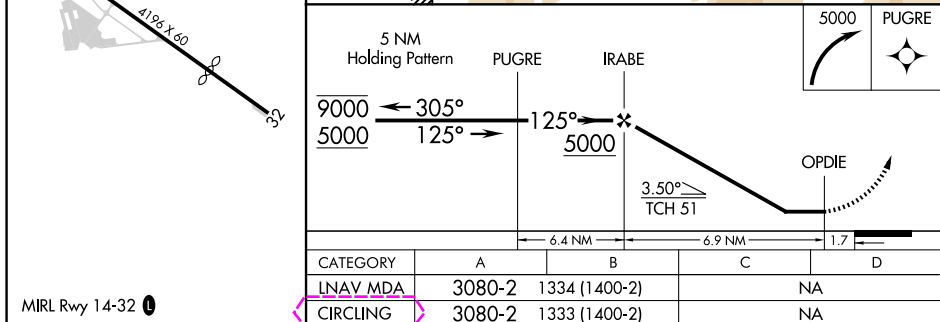
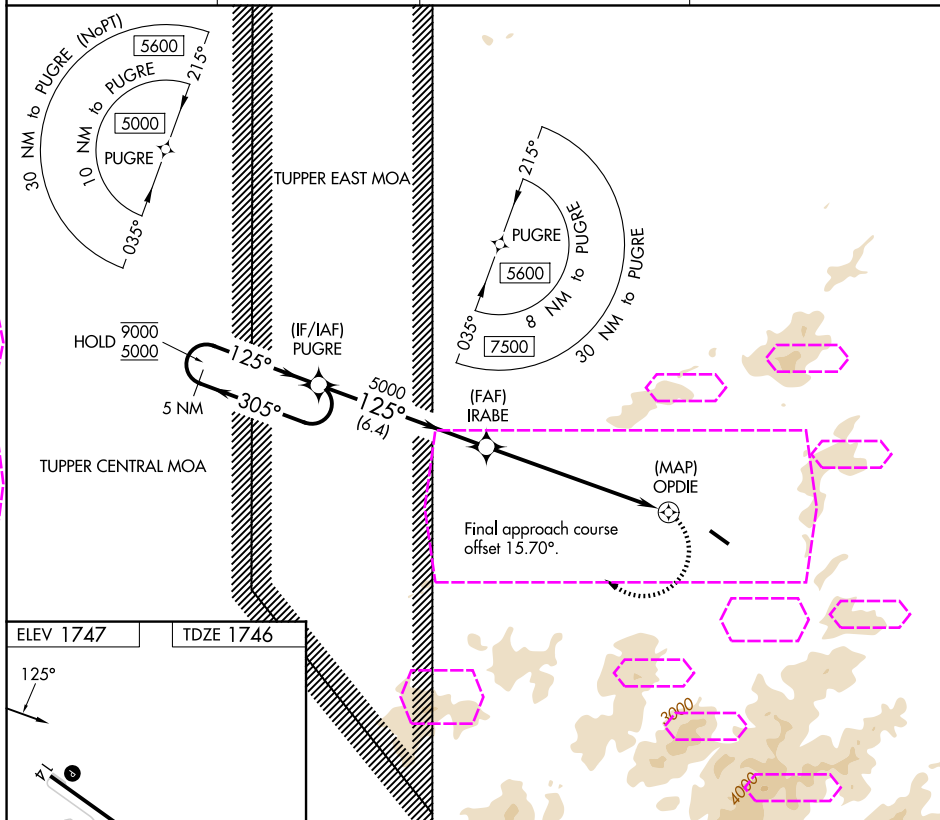
RNP APCH - GPS.



Rwy 14 helicopter visibility reduction below 1 SM NA.  
Use Saranac Lake altimeter setting.  
Procedure NA at night.

MISSED APPROACH: Climbing right  
turn to 5000 direct PUGRE and hold.

AWOS-3PT 118.025	SLK ASOS 124.175	BOSTON CENTER 120.35 342.25	UNICOM 122.8 (CTAF) 0
---------------------	---------------------	--------------------------------	--------------------------



LAKE PLACID, NEW YORK

Amdt 1A 03NOV22

44°16'N-73°58'W

LAKE PLACID (LKP)

RNAV (GPS) RWY 14

NE-2, 07 AUG 2025 to 04 SEP 2025

NE-2, 07 AUG 2025 to 04 SEP 2025