

INDIAN HEAD, MARYLAND

AL-9370 (FAA)

24025

WAAS CH 78036 W02A	APP CRS 014°	Rwy Idg 3740 TDZE 163 Apt Elev 175
--	------------------------	---

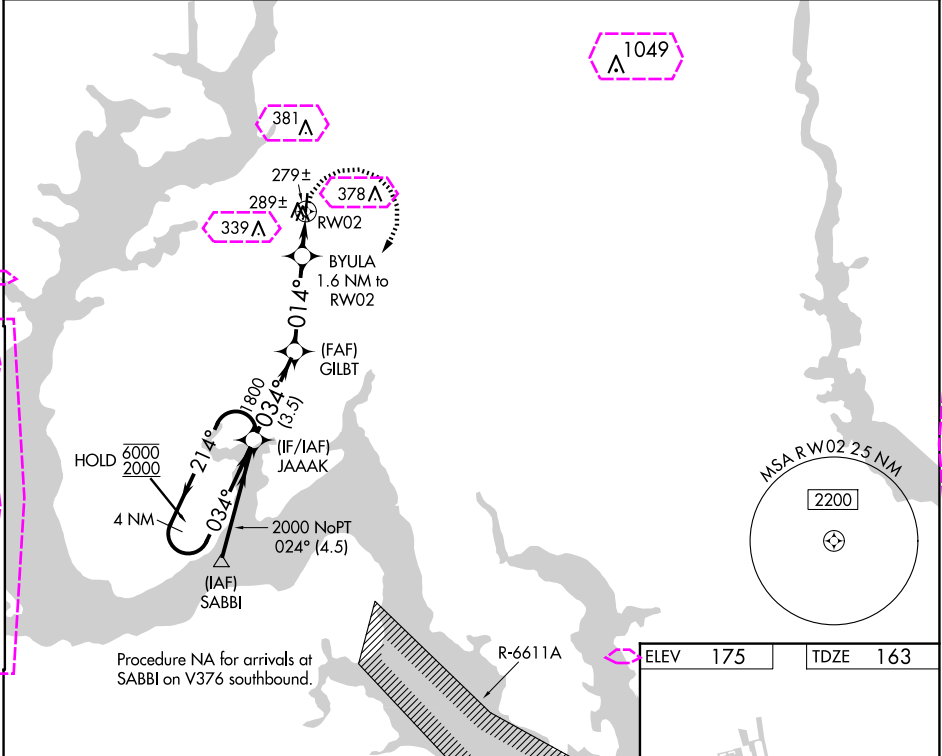
RNAV (GPS) RWY 2
MARYLAND (2W5)

RNP APCH.

NA Circling Rwy 20 NA at night. Rwy 2 helicopter visibility reduction below 3/4 SM NA. Use Ronald Reagan Washington Ntl altimeter setting.

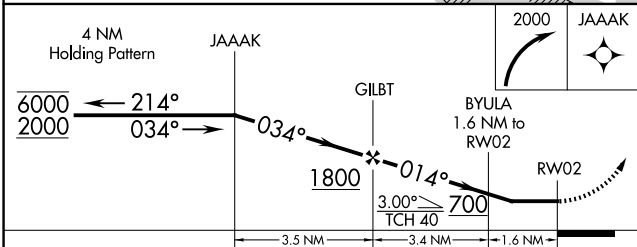
MISSED APPROACH: Climbing right turn to 2000 direct JAAAK and hold.

DCA ASOS 132.65	POTOMAC APP CON 124.7 338.2	UNICOM 122.7 (CTAF) 0
---------------------------	---------------------------------------	---------------------------------

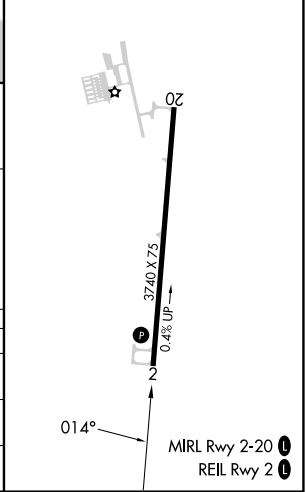


Procedure NA for arrivals at SABBI on V376 southbound.

ELEV 175	TDZE 163
----------	----------



CATEGORY	A	B	C	D
LP MDA	600-1	437 (500-1)	NA	
LNAV MDA	620-1	457 (500-1)	NA	
CIRCLING	700-1	525 (600-1)	NA	



INDIAN HEAD, MARYLAND
Amdt 1B 13SEP18

38°36'N-77°04'W

MARYLAND (2W5)
RNAV (GPS) RWY 2

INDIAN HEAD, MARYLAND

AL-9370 (FAA)

25219

WAAS CH 78036 W02A	APP CRS 014°	Rwy Ldg 3740 TDZE 163 Apt Elev 175
--	------------------------	---

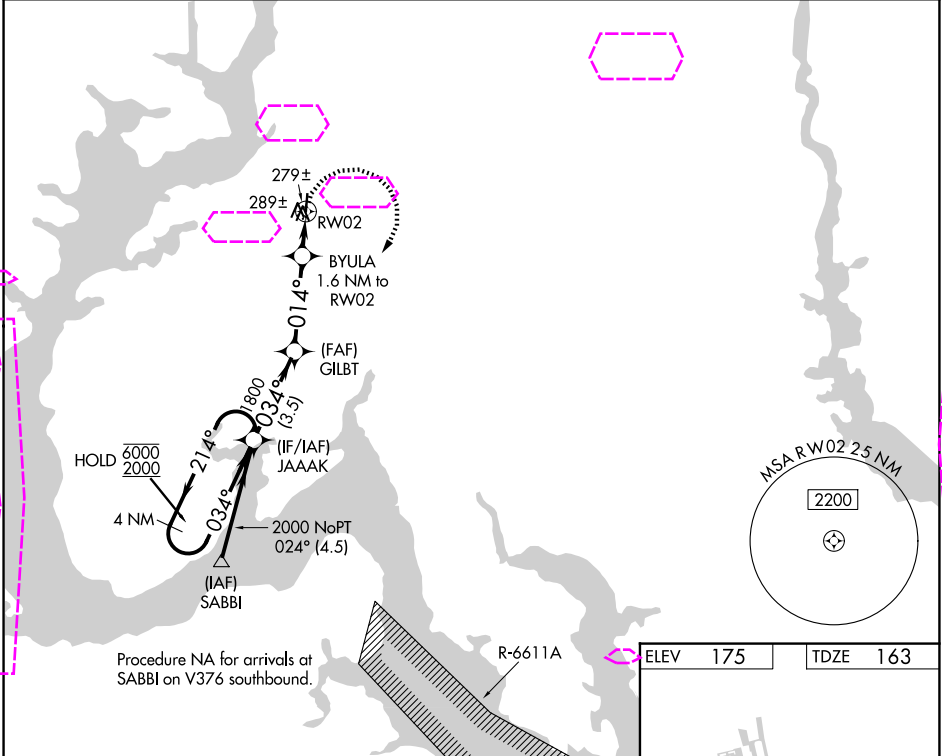
RNAV (GPS) RWY 2
MARYLAND (2W5)

RNP APCH:

NA Circling Rwy 20 NA at night. Rwy 2 helicopter visibility reduction below 3/4 SM NA. Use Ronald Reagan Washington Intl altimeter setting.

MISSED APPROACH: Climbing right turn to 2000 direct JAAAK and hold.

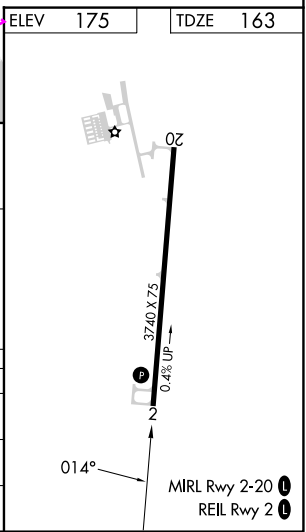
DCA ASOS 132.65	POTOMAC APP CON 124.7 338.2	UNICOM 122.7 (CTAF) 0
---------------------------	---------------------------------------	---------------------------------



NE-3, 07 AUG 2025 to 04 SEP 2025

NE-3, 07 AUG 2025 to 04 SEP 2025

4 NM Holding Pattern				
JAAAK				
GILBT				
BYULA 1.6 NM to RWY 2				
RWY 2				
3.5 NM 3.4 NM 1.6 NM				
CATEGORY	A	B	C	D
LP MDA	600-1	437 (500-1)	NA	
LNAV MDA	620-1	457 (500-1)	NA	
CIRCLING	700-1	525 (600-1)	NA	



INDIAN HEAD, MARYLAND
Amdt 1B 13SEP18

38°36'N-77°04'W

MARYLAND (2W5)
RNAV (GPS) RWY 2