

LAKEVIEW, MICHIGAN

AL-9344 (FAA)

24081

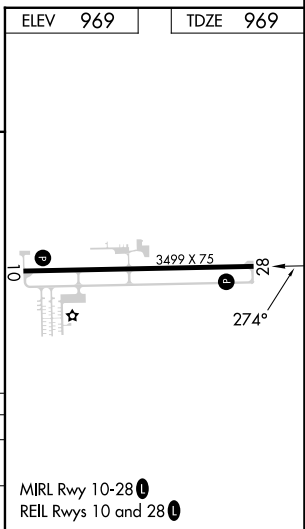
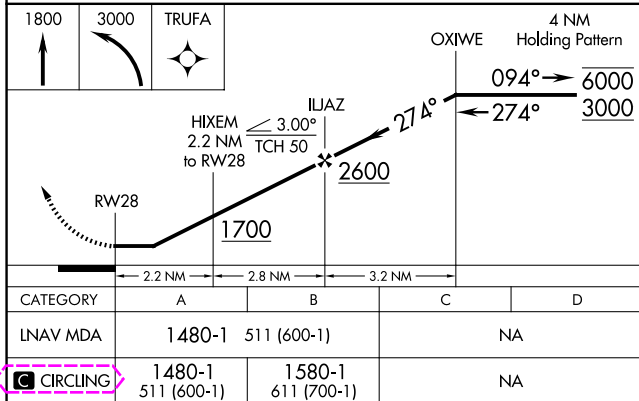
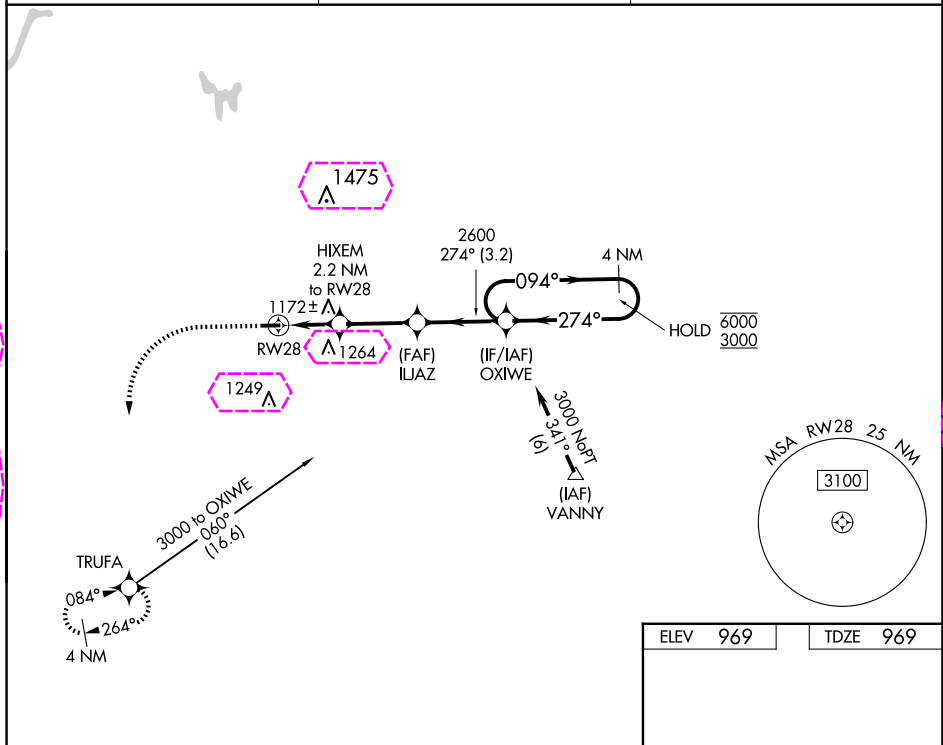
APP CRS	Rwy Idg	3499
274°	TDZE	969
	Apt Elev	969

# RNAV (GPS) RWY 28

LAKEVIEW/GRIFFITH FLD (13C)

RNP APCH - GPS.		MISSED APPROACH: Climb to 1800 then climbing left turn to 3000 direct TRUFA and hold.
NA	Procedure NA at night. Use Big Rapids altimeter setting; when not received, use Mount Pleasant altimeter setting and increase all MDAs 60 feet. Rwy 28 helicopter visibility reduction below 1 SM NA.	

RQB AWOS-3P 125.875	GREAT LAKES APP CON * 124.6 257.6	UNICOM 122.8 (CTAF) 0
------------------------	--------------------------------------	--------------------------



LAKEVIEW, MICHIGAN	43°27'N-85°16'W	LAKEVIEW/GRIFFITH FLD (13C)
Orig-A 21MAR24		RNAV (GPS) RWY 28

LAKEVIEW, MICHIGAN

AL-9344 (FAA)

25219

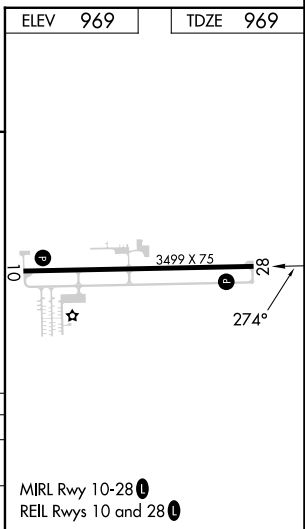
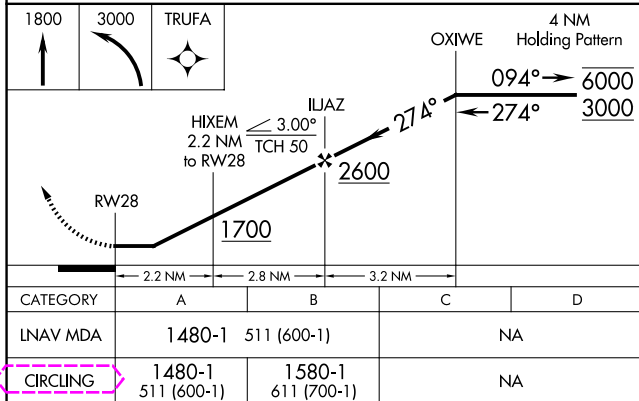
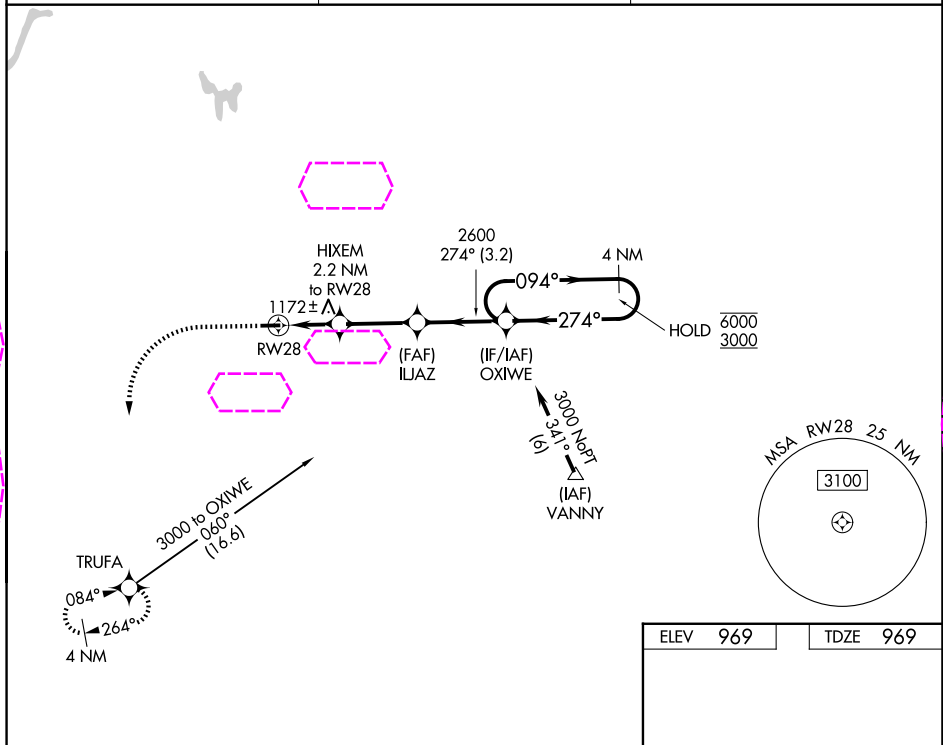
APP CRS	Rwy Ldg	3499
274°	TDZE	969
	Apt Elev	969

# RNAV (GPS) RWY 28

LAKEVIEW/GRIFFITH FLD (13C)

RNP APCH - GPS.	<p><b>NA</b></p> <p>Procedure NA at night. Use Big Rapids altimeter setting; when not received, use Mount Pleasant altimeter setting and increase all MDAs 60 feet. Rwy 28 helicopter visibility reduction below 1 SM NA.</p>	<p>MISSED APPROACH: Climb to 1800 then climbing left turn to 3000 direct TRUFA and hold.</p>
-----------------	---	--

RQB AWOS-3P 125.875	GREAT LAKES APP CON * 124.6 257.6	UNICOM 122.8 (CTAF) 0
------------------------	--------------------------------------	--------------------------



LAKEVIEW, MICHIGAN  
Orig-A 21MAR24

43°27'N-85°16'W

LAKEVIEW/GRIFFITH FLD (13C)  
RNAV (GPS) RWY 28

EC-1, 07 AUG 2025 to 04 SEP 2025

EC-1, 07 AUG 2025 to 04 SEP 2025