

LAKEVIEW, MICHIGAN

AL-9344 (FAA)

22139

APP CRS	Rwy Idg	3499
094°	TDZE	969
	Apt Elev	969

RNAV (GPS) RWY 10

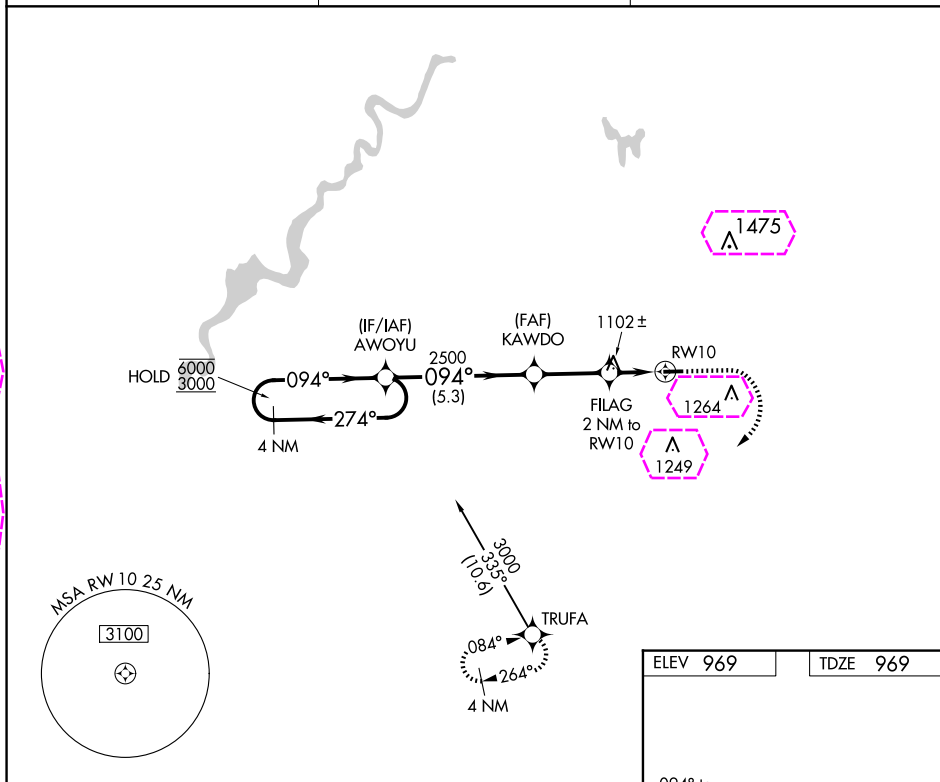
LAKEVIEW/GRIFFITH FLD (13C)

RNP APCH.	Procedure NA at night. Rwy 10 helicopter visibility reduction below 1 SM NA. Use Big Rapids altimeter setting.	MISSED APPROACH: Climb to 1800 then climbing right turn to 3000 direct TRUFA and hold.
NA		

RQB AWOS-3P
125.875

GREAT LAKES APP CON *
124.6 257.6

UNICOM
122.8 (CTAF) 0



4 NM Holding Pattern				Visual Segment - Obstacles.			1800		3000		TRUFA		094° to RW10	
AWOYU				KAWDO			FILAG 2 NM to RW10		RW10				01 28	
6000 ← 274°				094° →			2500		1640				3499 X 75	
3000														
				5.3 NM			2.7 NM			2 NM				
CATEGORY		A		B		C		D						
RNAV MDA		1400-1		431 (500-1)		NA								
CIRCLING		1480-1 511 (600-1)		1580-1 611 (700-1)		NA						MIRL Rwy 10-28 REIL Rwy 10 and 28		

LAKEVIEW, MICHIGAN
Orig-D 16JUL20

43°27'N-85°16'W

LAKEVIEW/GRIFFITH FLD (13C)
RNAV (GPS) RWY 10

EC-1, 10 JUL 2025 to 07 AUG 2025

EC-1, 10 JUL 2025 to 07 AUG 2025

LAKEVIEW, MICHIGAN

AL-9344 (FAA)

25219

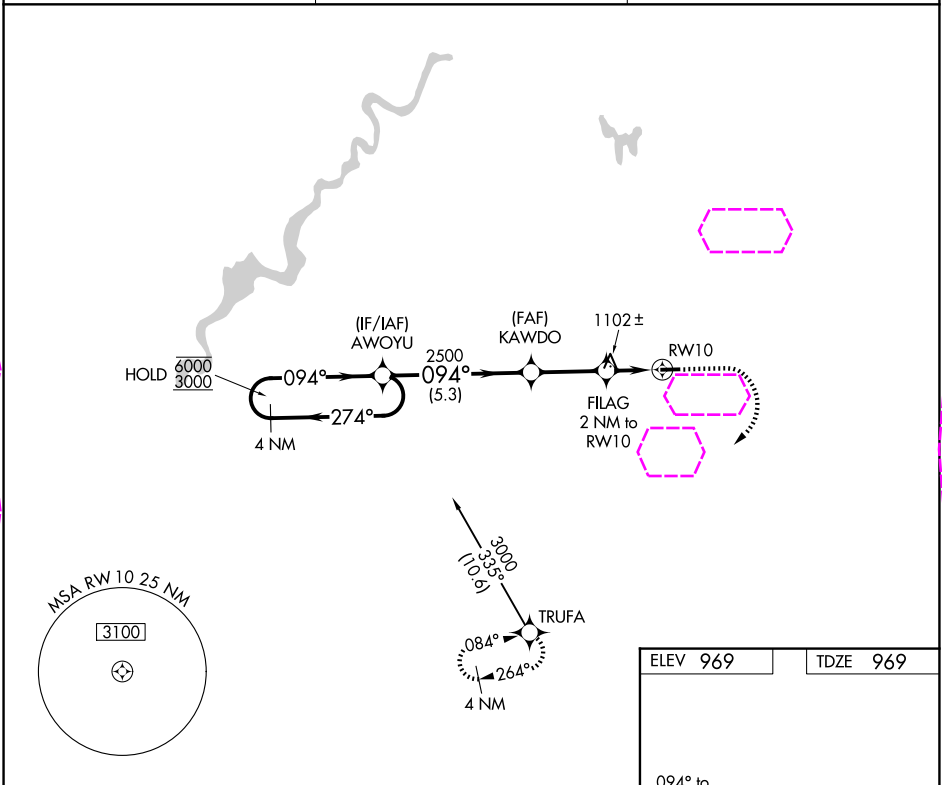
APP CRS	Rwy Ldg	3499
094°	TDZE	969
	Apt Elev	969

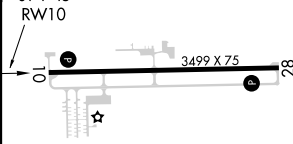

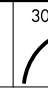

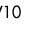
RNAV (GPS) RWY 10

LAKEVIEW/GRIFFITH FLD (13C)

RNP APCH.	Procedure NA at night. Rwy 10 helicopter visibility reduction below 1 SM NA. Use Big Rapids altimeter setting.	MISSED APPROACH: Climb to 1800 then climbing right turn to 3000 direct TRUFA and hold.
NA		

RQB AWOS-3P 125.875	GREAT LAKES APP CON * 124.6 257.6	UNICOM 122.8 (CTAF) 0
------------------------	--------------------------------------	--------------------------



4 NM Holding Pattern				Visual Segment - Obstacles.		1800	3000	TRUFA	
AWOYU				KAWDO					
6000 ← 274°				094° →		FILAG 2 NM to RW10			
3000				2500		RW10			
				1640					
				5.3 NM		2.7 NM		2 NM	
CATEGORY	A		B		C		D		
LNAV MDA	1400-1		431 (500-1)		NA				
CIRCLING	1480-1 511 (600-1)		1580-1 611 (700-1)		NA				MIRL Rwy 10-28 REIL Rwy 10 and 28

LAKEVIEW, MICHIGAN
Orig-D 16JUL20

43°27'N-85°16'W

LAKEVIEW/GRIFFITH FLD (13C)

RNAV (GPS) RWY 10

EC-1, 07 AUG 2025 to 04 SEP 2025

EC-1, 07 AUG 2025 to 04 SEP 2025