

STUEBENVILLE, OHIO

AL-9331 (FAA)

22195

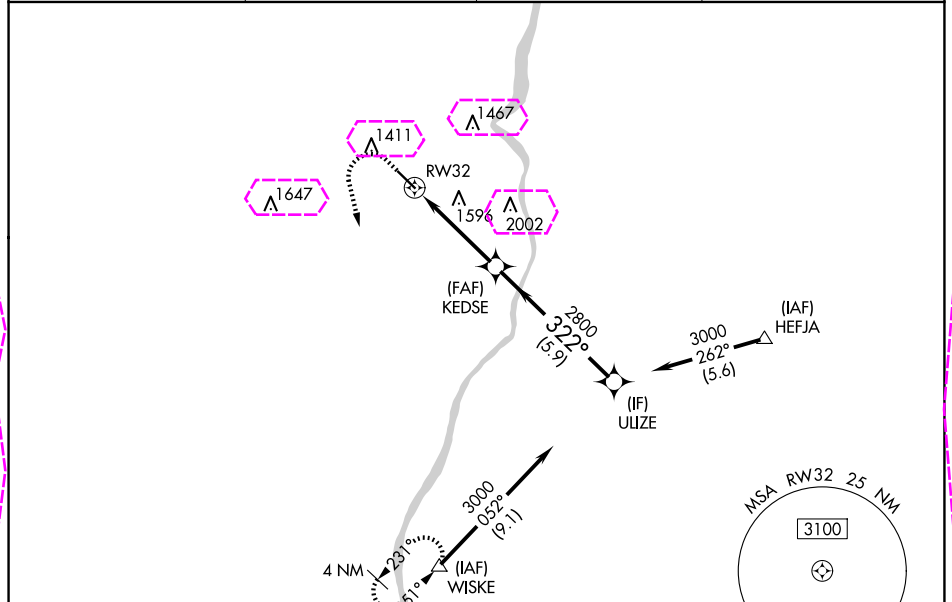
|  |                        |                             |   |
|--|------------------------|-----------------------------|---|
| WAAS<br>CH <b>58339</b><br><b>W32A</b> | APP CRS<br><b>322°</b> | Rwy Idg<br>TDZE<br>Apt Elev | <b>5001</b><br><b>1192</b><br><b>1198</b> |
|--|------------------------|-----------------------------|---|

# RNAV (GPS) RWY 32

GEARY A BATES/JEFFERSON COUNTY AIRPARK (2G2)

|  |   |
|--|---|
| RNP APCH.  | MISSED APPROACH: Climb to 2000 then climbing left turn to 3100 direct WISKE and hold. |
| <div><div>▼</div><div>▲</div></div> <div>Rwy 32 helicopter visibility reduction below ¾ SM NA.<br/>Baro-VNAV NA when using Wheeling altimeter setting.<br/>For uncompensated Baro-VNAV systems, LNAV/VNAV NA below -17°C or above 54°C. When local altimeter not received, use Wheeling altimeter setting.</div> |   |

|                          |                            |   |                                 |
|--------------------------|----------------------------|---|---------------------------------|
| AWOS-3<br><b>121.625</b> | HLG ASOS<br><b>127.375</b> | PITTSBURGH APP CON<br><b>124.75 338.2</b> | UNICOM<br><b>122.8 (CTAF) 0</b> |
|--------------------------|----------------------------|---|---------------------------------|



|           |           |
|-----------|-----------|
| ELEV 1198 | TDZE 1192 |
|-----------|-----------|

|   |                                 |              |   |              |   |  |                            |
|---|---------------------------------|--------------|---|--------------|---|--|----------------------------|
| <p>REIL Rwy 14 and 32<br/>MRL Rwy 14-32</p> | <div>2024</div>                 |              | <div>2000</div> <div>3100</div> <div>WISKE</div> <div>△</div> |              | <div>VGSI and RNAV glidepath not coincident (VGSI Angle 3.60/TCH 41).</div> |  | <div>ULIZE</div>           |
|   | <div>5001 X-75</div>            |              | <div>322°</div>   |              | <div>322°</div>   |  | <div>3000</div>            |
|   | <div>RW32</div>                 |              | <div>2800</div>   |              | <div>2800</div>   |  | <div>GP 3.60° TCH 55</div> |
|   | <div>4.1 NM</div>               |              | <div>5.9 NM</div>   |              |   |  |                            |
|   | <div>CATEGORY</div>             | <div>A</div> | <div>B</div>  | <div>C</div> | <div>D</div>  |  |                            |
| <div>LPV DA</div>                           | <div>1519-1 327 (400-1)</div>   |              |   |              | <div>NA</div>   |  |                            |
| <div>LNAV/VNAV DA</div>                     | <div>1972-2½ 780 (800-2½)</div> |              |   |              | <div>NA</div>   |  |                            |
| <div>LNAV MDA</div>                         | <div>1880-1 688 (700-1)</div>   |              | <div>1880-2 688 (700-2)</div>                                 |              | <div>NA</div>   |  |                            |
| <div>CIRCLING</div>                         | <div>1880-1 682 (700-1)</div>   |              | <div>1980-1 782 (800-1)</div>                                 |              | <div>1980-2¼ 782 (800-2¼)</div>   |  |                            |
|   |                                 |              |   |              | <div>NA</div>   |  |                            |

STUEBENVILLE, OHIO  
Amdt 1C 27JAN22

GEARY A BATES/JEFFERSON COUNTY AIRPARK (2G2)  
40°22'N-80°42'W

# RNAV (GPS) RWY 32

EC-2, 10 JUL 2025 to 07 AUG 2025

EC-2, 10 JUL 2025 to 07 AUG 2025

STUEBENVILLE, OHIO

AL-9331 (FAA)

25219

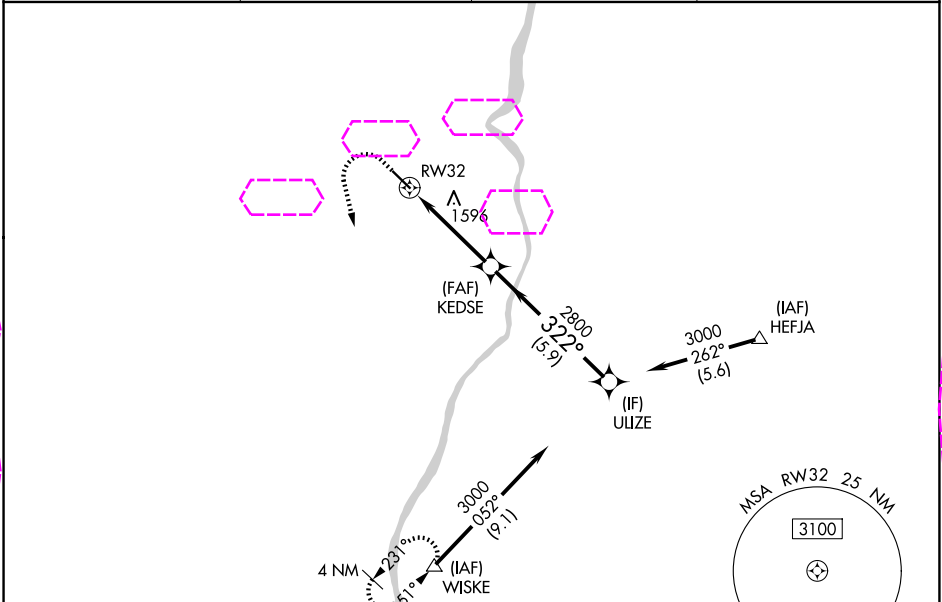
|  |                        |   |
|--|------------------------|---|
| WAAS<br>CH <b>58339</b><br><b>W32A</b> | APP CRS<br><b>322°</b> | Rwy Ldg<br>TDZE <b>1192</b><br>Apt Elev <b>1198</b> |
|--|------------------------|---|

# RNAV (GPS) RWY 32

GEARY A BATES/JEFFERSON COUNTY AIRPARK (2G2)

|  |   |
|--|---|
| RNP APCH.  | MISSED APPROACH: Climb to 2000 then climbing left turn to 3100 direct WISKE and hold. |
| <div><div>▼</div><div>▲</div></div> <div>Rwy 32 helicopter visibility reduction below ¾ SM NA.<br/>Baro-VNAV NA when using Wheeling altimeter setting.<br/>For uncompensated Baro-VNAV systems, LNAV/VNAV NA below -17°C or above 54°C. When local altimeter not received, use Wheeling altimeter setting.</div> |   |

|                          |                            |   |                                 |
|--------------------------|----------------------------|---|---------------------------------|
| AWOS-3<br><b>121.625</b> | HLG ASOS<br><b>127.375</b> | PITTSBURGH APP CON<br><b>124.75 338.2</b> | UNICOM<br><b>122.8 (CTAF) 0</b> |
|--------------------------|----------------------------|---|---------------------------------|



|           |           |
|-----------|-----------|
| ELEV 1198 | TDZE 1192 |
|-----------|-----------|

2000

3100

WISKE

VGSI and RNAV glidepath not coincident (VGSI Angle 3.60/TCH 41).

ULIZE

3000

322°

2800

4.1 NM

5.9 NM

GP 3.60°

TCH 55

| CATEGORY     | A                     | B                     | C                       | D  |
|--------------|-----------------------|-----------------------|-------------------------|----|
| LPV DA       | 1519-1                | 327 (400-1)           |                         | NA |
| LNAV/VNAV DA | 1972-2½               | 780 (800-2½)          |                         | NA |
| LNAV MDA     | 1880-1                | 688 (700-1)           | 1880-2<br>688 (700-2)   | NA |
| CIRCLING     | 1880-1<br>682 (700-1) | 1980-1<br>782 (800-1) | 1980-2¼<br>782 (800-2¼) | NA |

REIL Rwy 14 and 32 0  
MIRL Rwy 14-32 0

STUEBENVILLE, OHIO  
Amdt 1C 27JAN22

GEARY A BATES/JEFFERSON COUNTY AIRPARK (2G2)  
40°22'N-80°42'W

# RNAV (GPS) RWY 32

EC-2, 07 AUG 2025 to 04 SEP 2025

EC-2, 07 AUG 2025 to 04 SEP 2025