

STUEBENVILLE, OHIO

AL-9331 (FAA)

24361

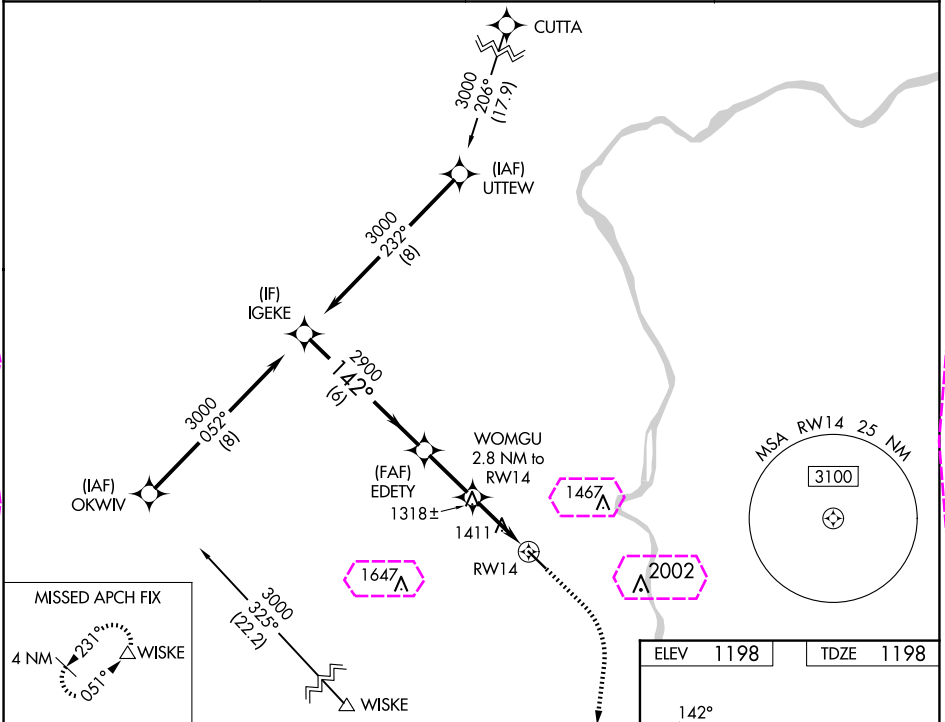
WAAS CH <b>66039</b> <b>W14A</b>	APP CRS <b>142°</b>	Rwy Idg TDZE <b>1198</b> Apt Elev <b>1198</b>
----------------------------------------	------------------------	-----------------------------------------------------

# RNAV (GPS) RWY 14

GEARY A BATES/JEFFERSON COUNTY AIRPARK (2G2)

RNP APCH.	<p>▼ Rwy 14 helicopter visibility reduction below <math>\frac{3}{4}</math> SM NA. Baro-VNAV NA when using Wheeling altimeter setting. For uncompensated Baro-VNAV systems, LNAV/VNAV NA below -17°C or above 54°C. When local altimeter setting not received, use Wheeling altimeter setting.</p> <p>▲ MISSED APPROACH: Climb to 2000 then climbing right turn to 3100 direct WISKE and hold.</p>
-----------	---------------------------------------------------------------------------------------------------------------------------------------------------------------------------------------------------------------------------------------------------------------------------------------------------------------------------------------------------------------------------------------------------

AWOS-3 <b>121.625</b>	HLG ASOS <b>127.375</b>	PITTSBURGH APP CON <b>124.75 338.2</b>	UNICOM <b>122.8 (CTAF) 0</b>
--------------------------	----------------------------	-------------------------------------------	---------------------------------



IGEKE	EDETY		WOMGU 2.8 NM to RW14	2000 ↑	3100 ↗	WISKE △
3000	2900		* 2120	* LNAV only		
GP 3.00° TCH 40	6 NM		2.4 NM	2.8 NM		
CATEGORY	A	B	C	D		
LPV DA	1475-1 277 (300-1)				NA	
LNAV/ VNAV DA	1799-1 ¾ 601 (700-1¾)				NA	
LNAV MDA	1740-1 542 (600-1)		1740-1⅝ 542 (600-1⅝)		NA	
<b>CIRCLING</b>	1800-1 602 (700-1)	1980-1 782 (800-1)	1980-2¼ 782 (800-2¼)		NA	

ELEV 1198	TDZE 1198
WISKE	
142°	
5001 x 75	
REIL Rwy 14 and 32 0	
MIRL Rwy 14-32 0	

STUEBENVILLE, OHIO  
Amdt 1B 27JAN22

GEARY A BATES/JEFFERSON COUNTY AIRPARK (2G2)  
40°22'N-80°42'W  
**RNAV (GPS) RWY 14**

STUEBENVILLE, OHIO

AL-9331 (FAA)

25219

WAAS CH <b>66039</b> <b>W14A</b>	APP CRS <b>142°</b>	Rwy Ldg TDZE Apt Elev	<b>5001</b> <b>1198</b> <b>1198</b>
----------------------------------------	------------------------	-----------------------------	-------------------------------------------

# RNAV (GPS) RWY 14

GEARY A BATES/JEFFERSON COUNTY AIRPARK (2G2)

RNP APCH.

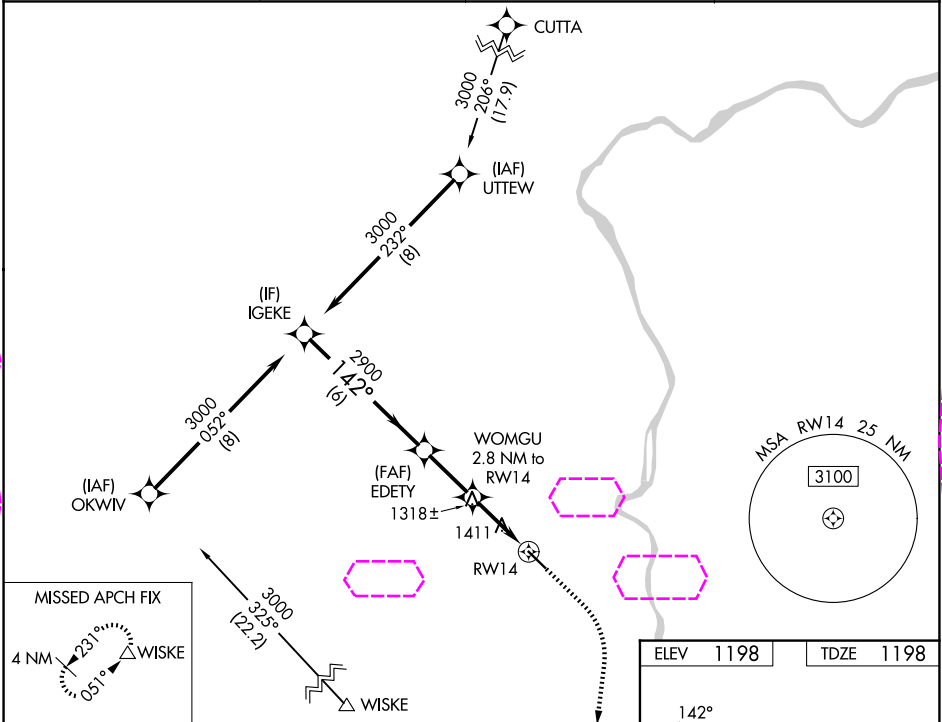
▼

⚠

Rwy 14 helicopter visibility reduction below  $\frac{3}{4}$  SM NA. Baro-VNAV NA when using Wheeling altimeter setting. For uncompensated Baro-VNAV systems, LNAV/VNAV NA below -17°C or above 54°C. When local altimeter setting not received, use Wheeling altimeter setting.

MISSED APPROACH:  
Climb to 2000 then climbing right turn to 3100 direct WISKE and hold.

AWOS-3 <b>121.625</b>	HLG ASOS <b>127.375</b>	PITTSBURGH APP CON <b>124.75 338.2</b>	UNICOM <b>122.8 (CTAF)</b>
--------------------------	----------------------------	-------------------------------------------	-------------------------------



IGEKE

EDETY

WOMGU

GP 3.00°  
TCH 40

2000

3100

WISKE

\* LNAV only

RWY 14

6 NM

2.4 NM

2.8 NM

\* 2120

CATEGORY	A	B	C	D
LPV DA	1475-1	277 (300-1)		NA
LNAV/VNAV DA	1799-1 $\frac{3}{4}$	601 (700-1 $\frac{3}{4}$ )		NA
LNAV MDA	1740-1	542 (600-1)	1740-1 $\frac{5}{8}$ 542 (600-1 $\frac{5}{8}$ )	NA
CIRCLING	1800-1 602 (700-1)	1980-1 782 (800-1)	1980-2 $\frac{1}{4}$ 782 (800-2 $\frac{1}{4}$ )	NA

ELEV 1198

TDZE 1198

142°

5001 X 75

REIL Rwy 14 and 32

MIRL Rwy 14-32

EC-2, 07 AUG 2025 to 04 SEP 2025

EC-2, 07 AUG 2025 to 04 SEP 2025

STUEBENVILLE, OHIO  
Amdt 1B 27JAN22

GEARY A BATES/JEFFERSON COUNTY AIRPARK (2G2)  
40°22'N-80°42'W

# RNAV (GPS) RWY 14