

APP CRS 289°	Rwy Ldg TDZE Apt Elev	N/A N/A 149
------------------------	-----------------------------	--

RNAV (GPS)-A KING COVE (KVC)(PAVC)

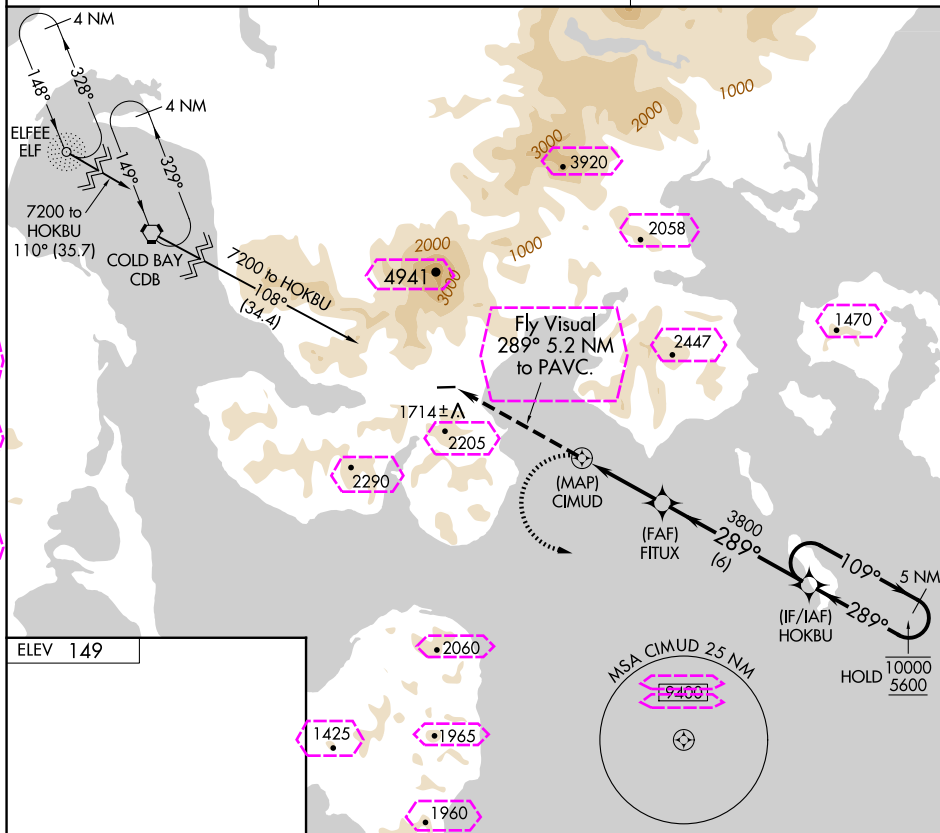
RNP APCH.

Procedure NA at night.
Circling NA north Rwy 8 and 26.

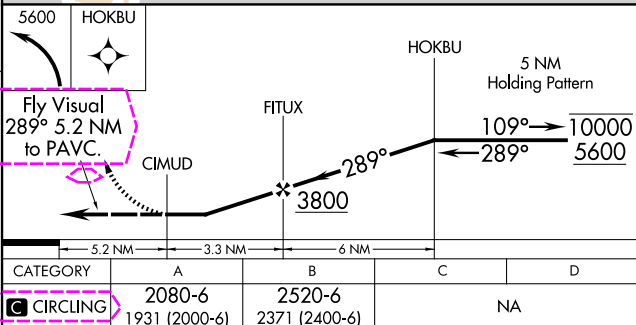
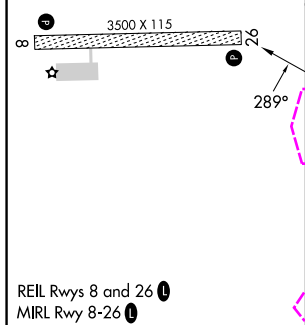
MISSED APPROACH: Climbing left turn to 5600 direct HOKBU and hold.

AWOS-3P
118,325

ANCHORAGE CENTER
118.5 278.3

CTAF
122.9 L

ELEV 149



KING COVE, ALASKA
Orig-C 31DEC20

KING COVE (KVC)(PAVC)
RNAV (GPS)-A

55°07'N-162°16'W

KING COVE, ALASKA

AL-9292 (FAA)

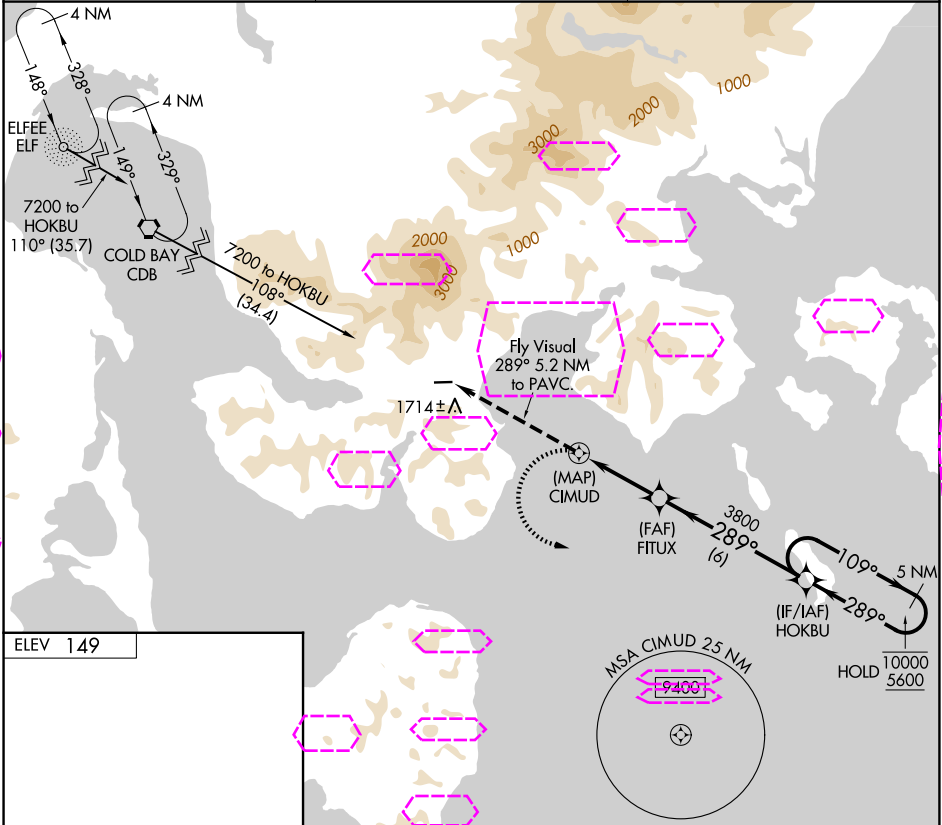
25219

APP CRS 289°	Rwy Ldg TDZE Apt Elev 149	N/A N/A 149
------------------------	---	--------------------------

RNAV (GPS)-A
KING COVE (KVC)(PAVC)

RNP APCH - GPS	MISSED APPROACH: Climbing left turn to 5600 direct HOKBU and hold, continue climb-in-hold to 5600.
Procedure NA at night. Circling NA north Rwy 8 and 26.	
-8°C	

AWOS-3P 118.325	ANCHORAGE CENTER 118.5 278.3	CTAF 122.9
---------------------------	--	----------------------



ELEV 149	5600 HOKBU	5 NM Holding Pattern
3500 X 1115	Fly Visual 289° 5.2 NM to PAVC.	109° → 10000 ← 289° 5600
289°	CIMUD	3800
5.2 NM	3.3 NM	6 NM
REIL Rwy 8 and 26	Category A	Category B
MIRL Rwy 8-26	2080-6 1931 (2000-6)	2520-6 2371 (2400-6)
	CIRCLING	NA

KING COVE, ALASKA

KING COVE (KVC)(PAVC)

Orig-D 07AUG25

55°07'N-162°16'W

RNAV (GPS)-A

AK, 07 AUG 2025 to 02 OCT 2025

AK, 07 AUG 2025 to 02 OCT 2025