

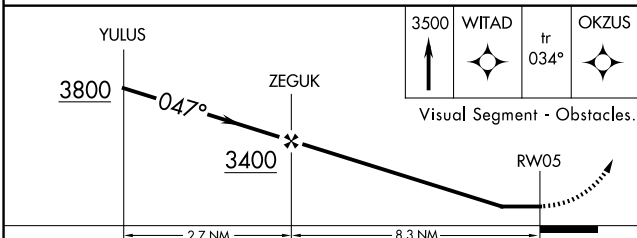
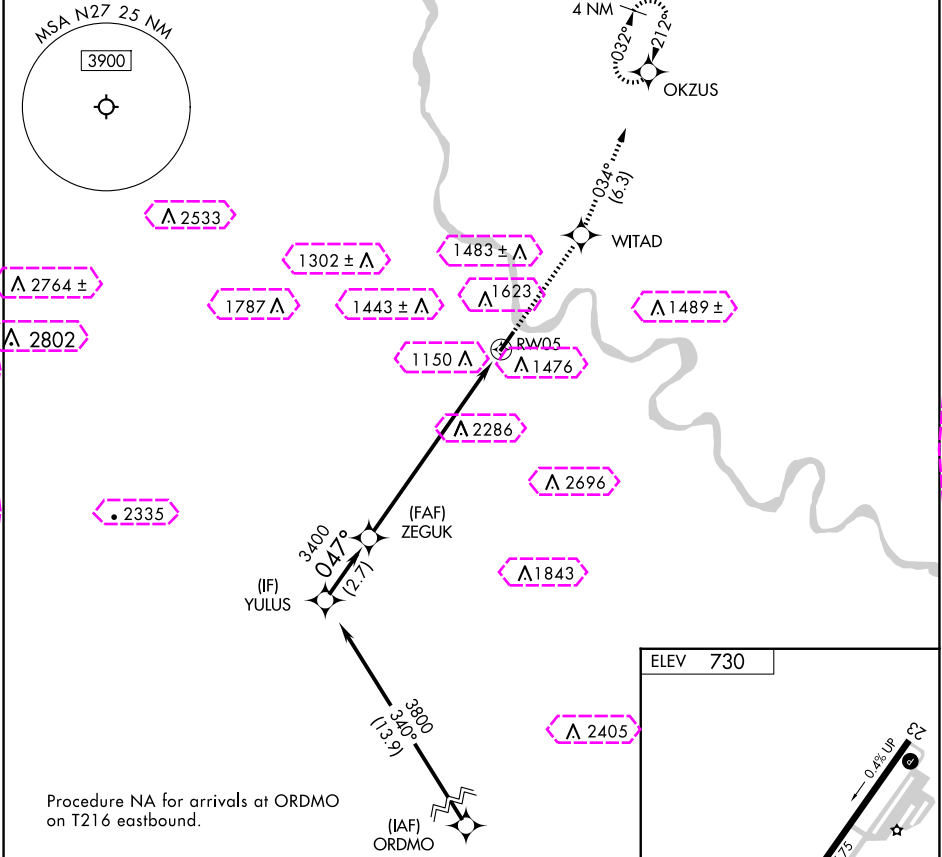
APP CRS	Rwy Idg	N/A
047°	TDZE	N/A
	Apt Elev	730

RNAV (GPS)-A

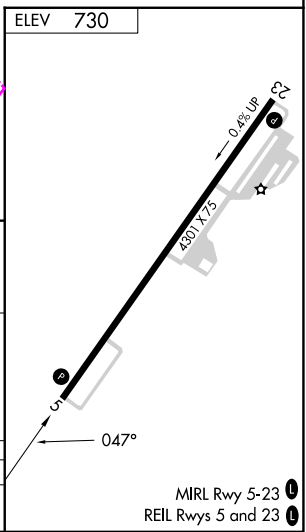
BRADFORD COUNTY (N27)

RNP APCH - GPS.	MISSED APPROACH: Climb to 3500 direct WITAD and on track 034° to OKZUS and hold.
▼ When local altimeter setting not received, use Elmira altimeter setting and increase all MDAs 120 feet. Rwy 5 helicopter visibility reduction below 1 SM NA. Procedure NA at night.	

AWOS-3 119.925	BINGHAMTON APP CON ★ 118.6 257.625	UNICOM 123.0 (CTAF) 0
-------------------	---------------------------------------	--------------------------



CATEGORY	A	B	C	D
CIRCLING	2680-1¼ 1950 (2000-1¼)	2680-1½ 1950 (2000-1½)	NA	NA



TOWANDA, PENNSYLVANIA

AL-9279 (FAA)

25219

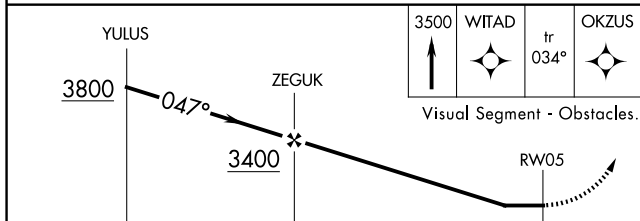
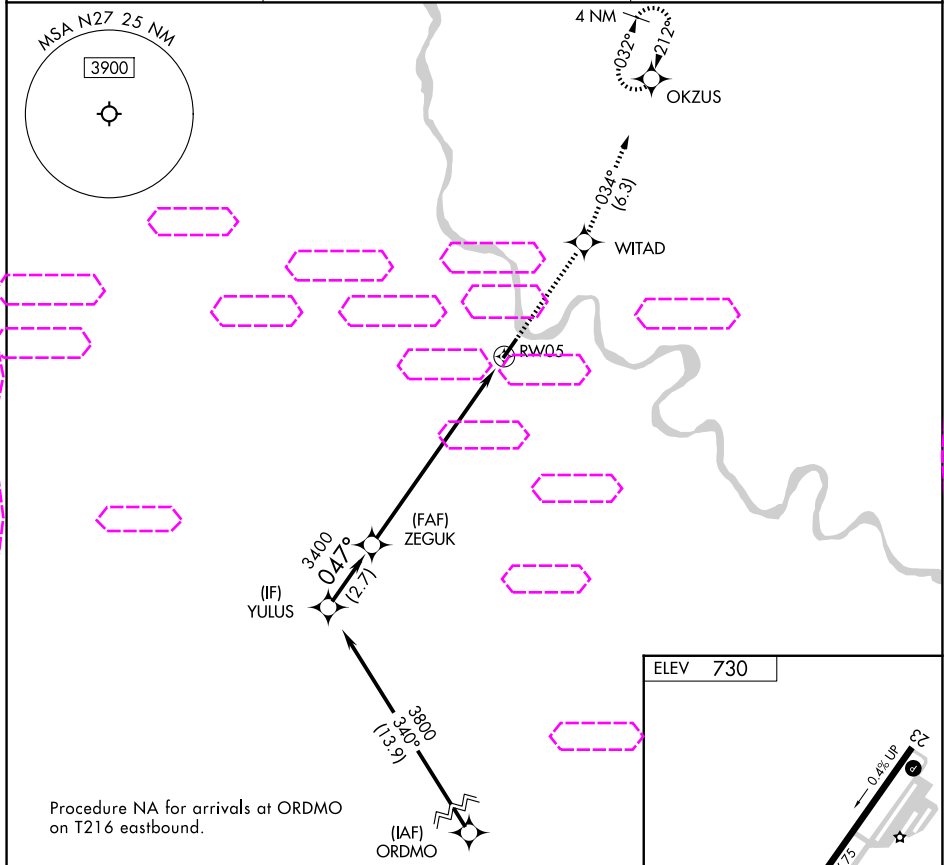
APP CRS	Rwy Ldg	N/A
047°	TDZE	N/A
	Apt Elev	730

RNAV (GPS)-A

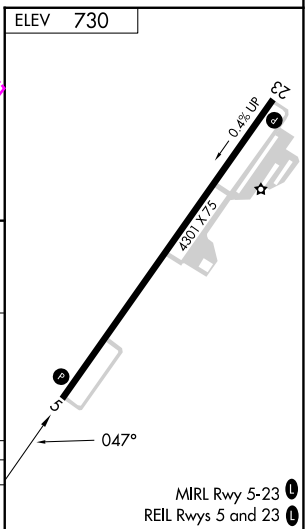
BRADFORD COUNTY (N27)

RNP APCH - GPS.	MISSED APPROACH: Climb to 3500 direct WITAD and on track 034° to OKZUS and hold.
▼ When local altimeter setting not received, use Elmira altimeter setting and increase all MDAs 120 feet. Rwy 5 helicopter visibility reduction below 1 SM NA. Procedure NA at night.	

AWOS-3 119.925	BINGHAMTON APP CON ★ 118.6 257.625	UNICOM 123.0 (CTAF) 0
-------------------	---------------------------------------	--------------------------



CATEGORY	A	B	C	D
CIRCLING	2680-1¼ 1950 (2000-1¼)	2680-1½ 1950 (2000-1½)	NA	NA



TOWANDA, PENNSYLVANIA
Amdt 1 02NOV23

41°44'N-76°27'W

BRADFORD COUNTY (N27)
RNAV (GPS)-A

NE-4, 07 AUG 2025 to 04 SEP 2025

NE-4, 07 AUG 2025 to 04 SEP 2025

MIRL Rwy 5-23 0
REIL Rwys 5 and 23 0