

TOWANDA, PENNSYLVANIA

AL-9279 (FAA)

24249

APP CRS	Rwy Idg	4301
227°	TDZE	726
	Apt Elev	730

RNAV (GPS) RWY 23

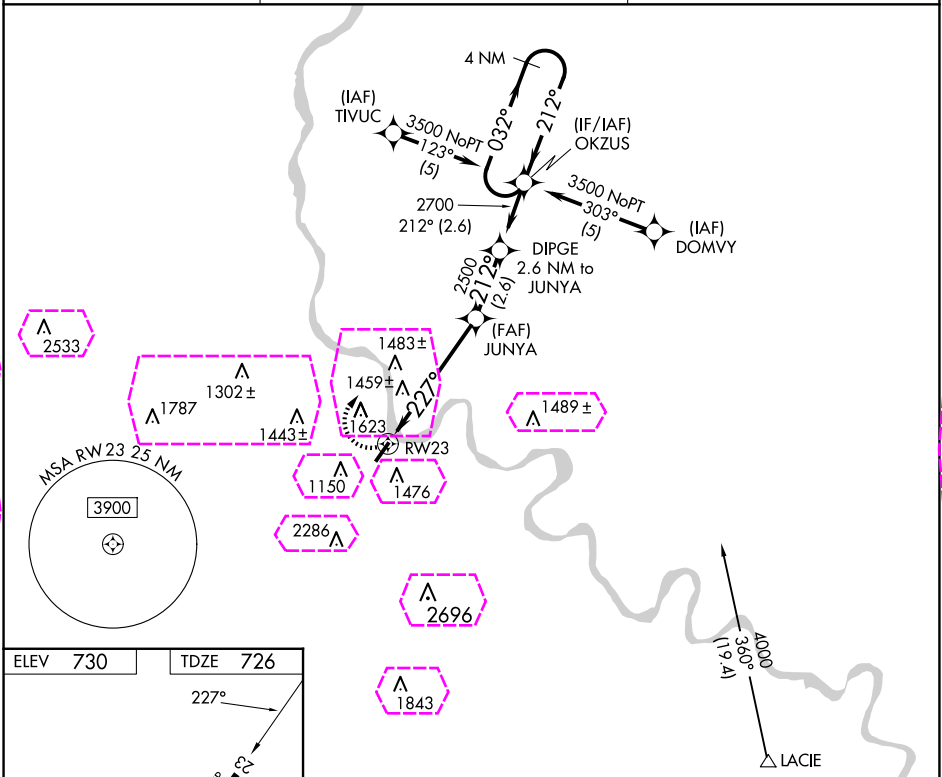
BRADFORD COUNTY (N27)

NA

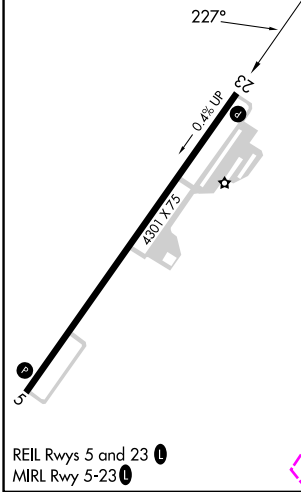
When local altimeter setting not received, use Elmira altimeter setting and increase all MDAs 40 feet. GPS or RNP-0.3 required. DME/DME RNP-0.3 NA.
Night landing: RWY 5 NA. Helicopter visibility reduction below 3/4 SM NA.


MISSED APPROACH:
Climbing right turn to 3500
direct OKZUS WP and hold.

AWOS-3 119.925	BINGHAMTON APP CON ★ 118.6 257.625	UNICOM 123.0 (CTAF)
--------------------------	----------------------------------------------	-------------------------------



ELEV 730	TDZE 726
----------	----------



3500	OKZUS				
		4 NM Holding Pattern			
		DIPGE 2.6 NM to JUNYA			
		OKZUS			
		4 NM Holding Pattern			
		3500			
		2700			
		2500			
		227°			
		3.00° TCH 37			
		RW23			
		5.5 NM			
		2.6 NM			
		2.6 NM			
CATEGORY	A	B	C	D	
LNAV MDA	1800-1¼ 1074 (1100-1¼)	1800-1½ 1074 (1100-1½)	NA		
CIRCLING	2020-1¼ 1290 (1300-1¼)	2020-1½ 1290 (1300-1½)	NA		

TOWANDA, PENNSYLVANIA
Orig-B 05NOV20

41°44'N-76°27'W

RNAV (GPS) RWY 23

