

APOPKA, FLORIDA

AL-9278 (FAA)

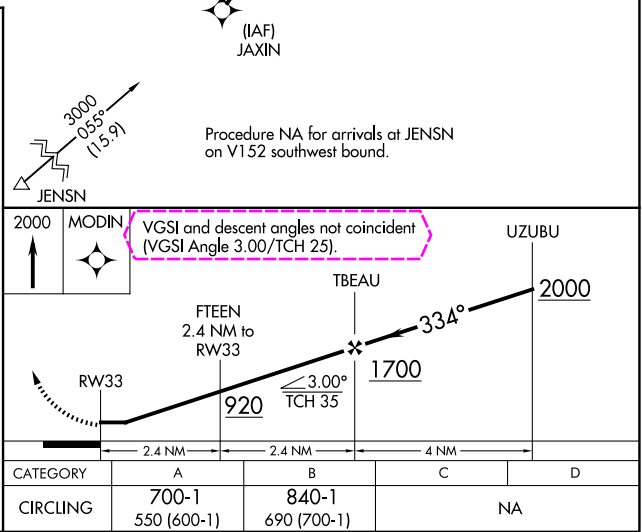
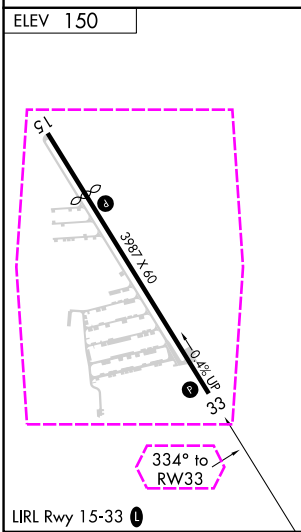
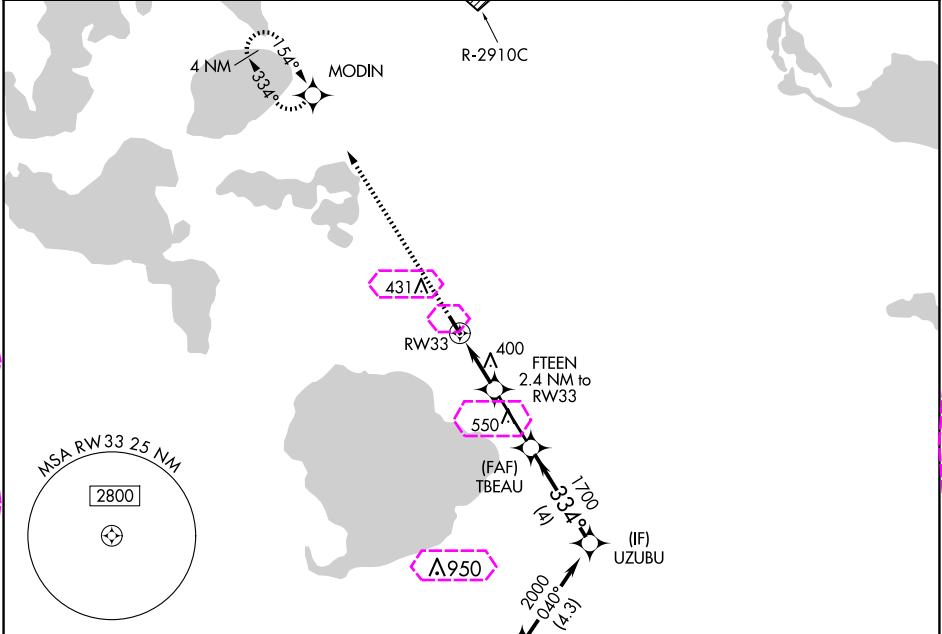
21112

APP CRS <b>334°</b>	Rwy Idg TDZE Apt Elev	N/A N/A 150
------------------------	-----------------------------	-------------------

**RNAV (GPS)-B**  
ORLANDO APOPKA (X04)

<b>NA</b>	DME/DME RNP-0.3 NA. Procedure NA at night. Visibility reduction by helicopters NA. Use Leesburg Intl altimeter setting; when not received, use Executive altimeter setting.	MISSED APPROACH: Climb to 2000 direct MODIN and hold.
-----------	---	---

LEE ASOS <b>134.325</b>	ORLANDO APP CON <b>135.3 351.9</b>	UNICOM <b>123.05</b> (CTAF) <b>0</b>
----------------------------	---------------------------------------	---



APOPKA, FLORIDA  
Orig-A 22APR21

28°42'N-81°35'W

ORLANDO APOPKA (X04)  
**RNAV (GPS)-B**

SE-3, 10 JUL 2025 to 07 AUG 2025

SE-3, 10 JUL 2025 to 07 AUG 2025

