

APOKA, FLORIDA

AL-9278 (FAA)

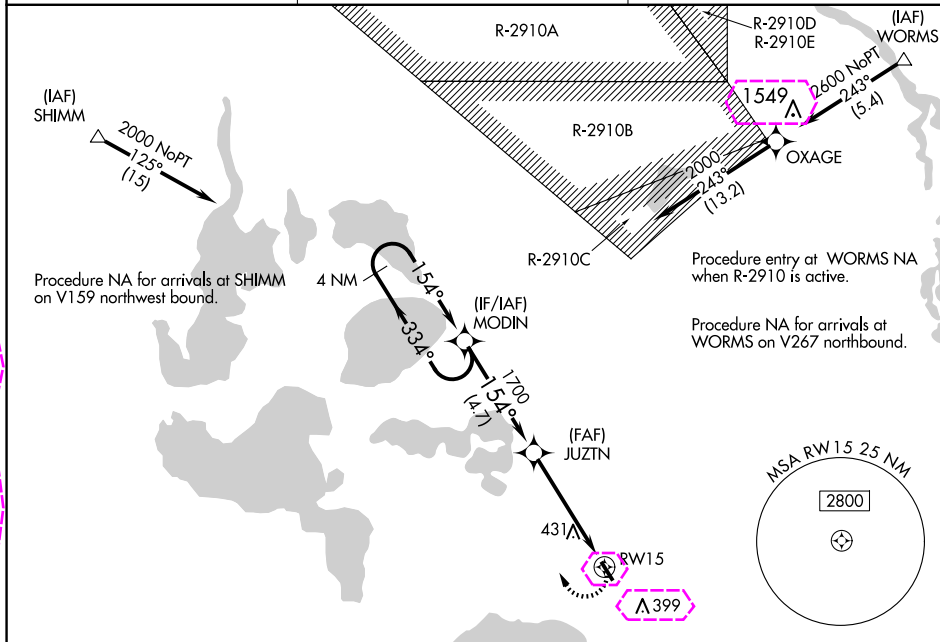
21112

APP CRS 154°	Rwy Idg TDZE Apt Elev	N/A N/A 150
------------------------	-----------------------------	--

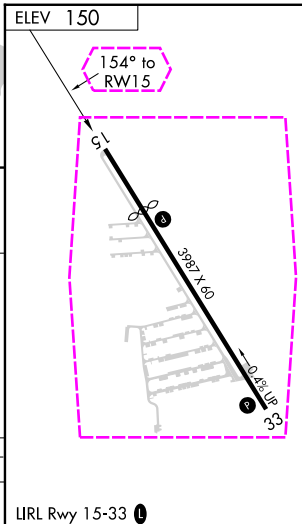
RNAV (GPS)-A
ORLANDO APOKA (X04)

NA	DME/DME RNP-0.3 NA. Procedure NA at night. Visibility reduction by helicopters NA. Use Leesburg Intl altimeter setting; when not received, use Executive altimeter setting.	MISSED APPROACH: Climbing right turn to 2000 direct MODIN and hold.
-----------	---	---

LEE ASOS 134.325	ORLANDO APP CON 135.3 351.9	UNICOM 123.05 (CTAF) 1
----------------------------	---------------------------------------	---



4 NM Holding Pattern			VGSi and descent angles not coincident (VGSi Angle 3.50/TCH 10).		2000		MODIN		
MODIN			JUZTN		RW15				
2000			1700		3.00°		TCH 35		
4.7 NM			4.8 NM						
CATEGORY		A		B		C		D	
CIRCLING		780-1 630 (700-1)		840-1 690 (700-1)		NA			

APOKA, FLORIDA
Orig-A 22APR21

28°42'N-81°35'W

ORLANDO APOKA (X04)
RNAV (GPS)-A

APOPKA, FLORIDA

AL-9278 (FAA)

25219

APP CRS 154°	Rwy Ldg TDZE Apt Elev	N/A N/A 150
------------------------	-----------------------------	--------------------------

RNAV (GPS)-A

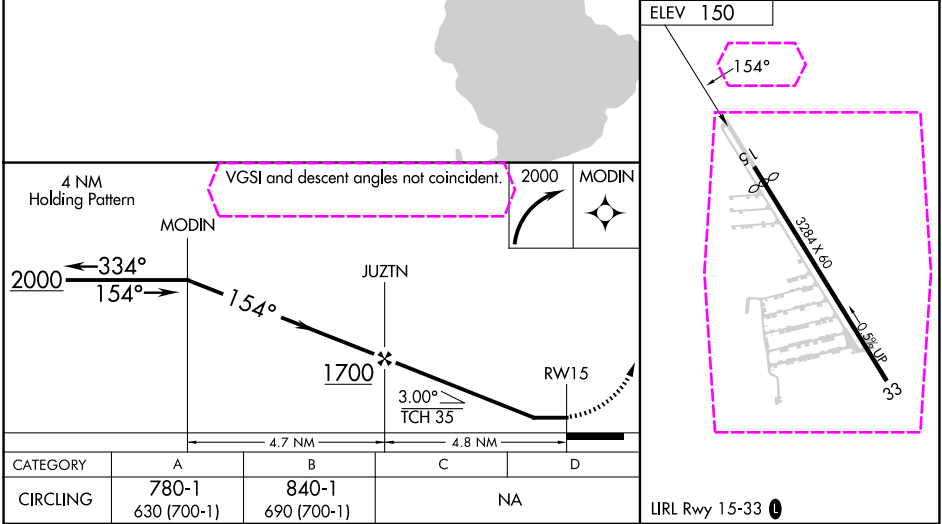
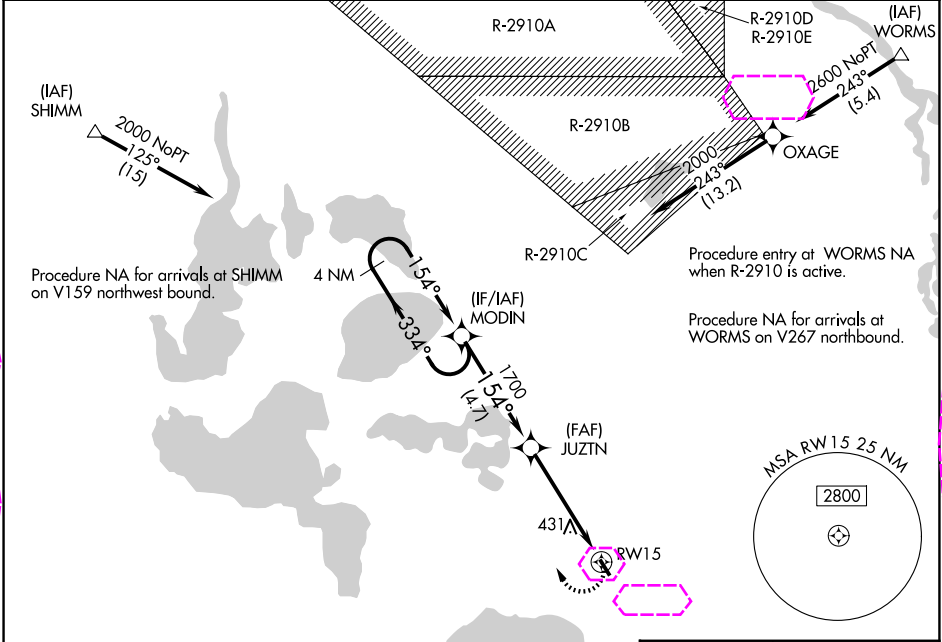
ORLANDO APOPKA (X04)

NA

DME/DME RNP-0.3 NA. Procedure NA at night. Visibility reduction by helicopters NA. Use Leesburg Intl altimeter setting; when not received, use Executive altimeter setting.

MISSED APPROACH: Climbing right turn to 2000 direct MODIN and hold.

LEE ASOS 134.325	ORLANDO APP CON 135.3 351.9	UNICOM 123.05 (CTAF) 0
----------------------------	---------------------------------------	---



APOPKA, FLORIDA
Orig-A 22APR21

28°42'N-81°35'W

ORLANDO APOPKA (X04)
RNAV (GPS)-A

SE-3, 07 AUG 2025 to 04 SEP 2025

SE-3, 07 AUG 2025 to 04 SEP 2025