

HARTFORD, KENTUCKY

AL-9266 (FAA)

24249

WAAS CH <b>45926</b> <b>W03A</b>	APP CRS <b>027°</b>	Rwy Idg <b>5003</b> TDZE <b>530</b> Apt Elev <b>537</b>
--	------------------------	---

# RNAV (GPS) RWY 3

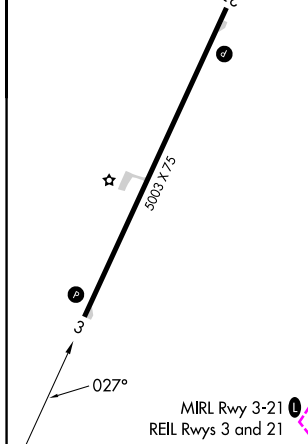
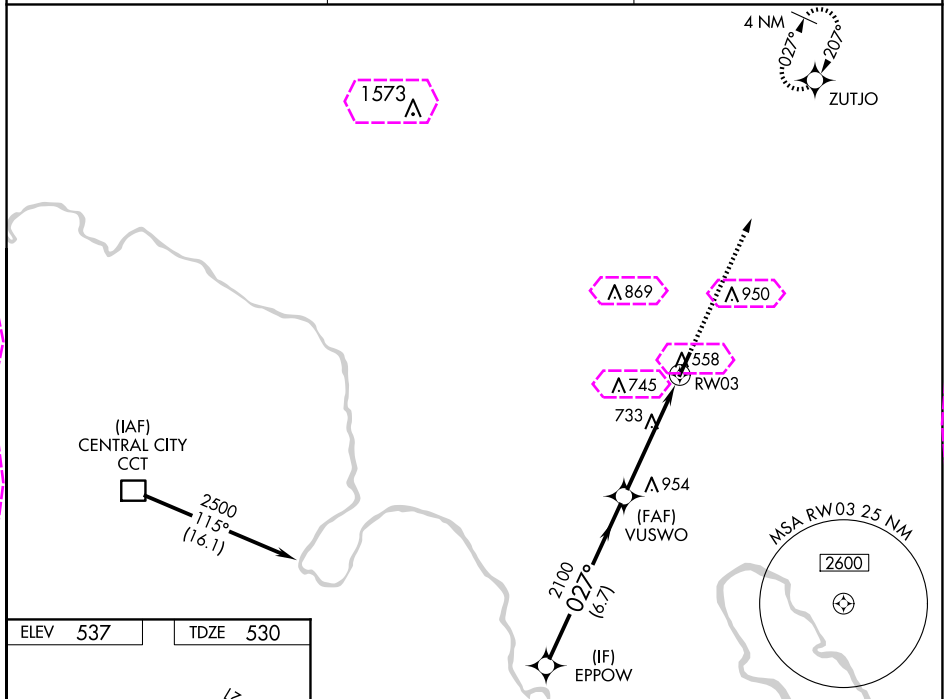
OHIO COUNTY (JQD)

RNP APCH - GPS.

**⚠** Baro-VNAV and VDP NA when using Owensboro altimeter setting. For uncompensated Baro-VNAV systems, LNAV/VNAV NA below -16°C or above 54°C. When local altimeter setting not received, use Owensboro altimeter setting and increase LPV and LNAV/VNAV DA to 851 feet. Increase all MDA 80 feet and LNAV Cat C visibility  $\frac{3}{8}$  SM and Circling Cat C visibility  $\frac{1}{4}$  SM. Circling Rwy 21 NA at night. Rwy 3 helicopter visibility reduction below  $\frac{3}{8}$  SM NA.

**MISSED APPROACH:**  
Climb to 2500 direct ZUTJO and hold.

AWOS-3PT <b>132.1</b>	EVANSVILLE APP CON ★ <b>124.025 290.9</b>	UNICOM <b>122.8 (CTAF) 0</b>
--------------------------	--	---------------------------------



EPPOW		VUSWO		RW03	
2500		2100		1.5 NM to RW03	
GP 3.00° TCH 40		2100		RW03	
6.7 NM		3.3 NM		1.5 NM	
CATEGORY	A	B	C	D	
LPV DA	780-1	250 (300-1)		NA	
LNAV/VNAV DA	780-1	250 (300-1)		NA	
LNAV MDA	1040-1	510 (600-1)	1040-1 $\frac{3}{8}$ 510 (600-1 $\frac{3}{8}$ )	NA	
<b>CIRCLING</b>	1040-1 503 (600-1)	1100-1 563 (600-1)	1300-2 $\frac{1}{4}$ 763 (800-2 $\frac{1}{4}$ )	NA	

HARTFORD, KENTUCKY

Orig-F 05SEP24

OHIO COUNTY (JQD)

37°28'N - 86°51'W

# RNAV (GPS) RWY 3

SE-1, 10 JUL 2025 to 07 AUG 2025

SE-1, 10 JUL 2025 to 07 AUG 2025

HARTFORD, KENTUCKY

AL-9266 (FAA)

25219

WAAS CH <b>45926</b> <b>W03A</b>	APP CRS <b>027°</b>	Rwy Ldg TDZE <b>530</b> Apt Elev <b>537</b>
--	------------------------	---

# RNAV (GPS) RWY 3

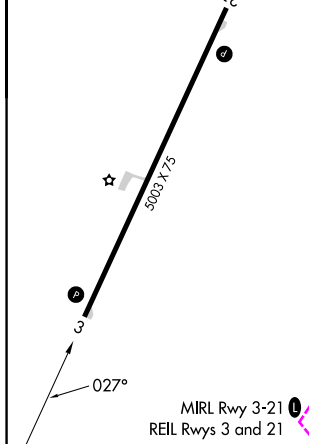
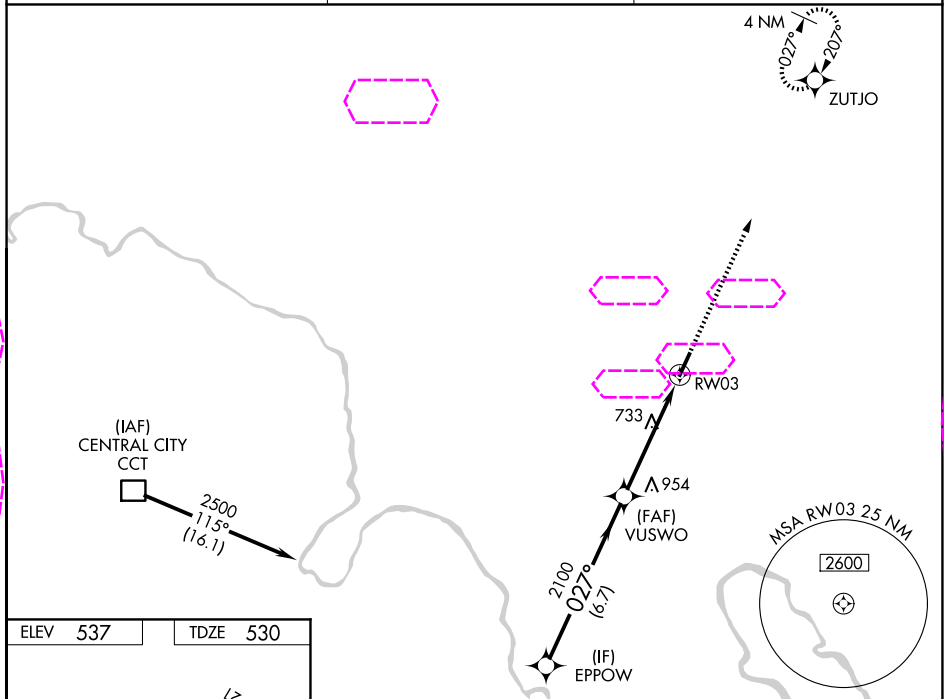
OHIO COUNTY (JQD)

RNP APCH - GPS.

**⚠** Baro-VNAV and VDP NA when using Owensboro altimeter setting. For uncompensated Baro-VNAV systems, LNAV/VNAV NA below -16°C or above 54°C. When local altimeter setting not received, use Owensboro altimeter setting and increase LPV and LNAV/VNAV DA to 851 feet. Increase all MDA 80 feet and LNAV Cat C visibility  $\frac{3}{8}$  SM and Circling Cat C visibility  $\frac{1}{4}$  SM. Circling Rwy 21 NA at night. Rwy 3 helicopter visibility reduction below  $\frac{3}{8}$  SM NA.

**MISSED APPROACH:**  
Climb to 2500 direct ZUTJO and hold.

AWOS-3PT <b>132.1</b>	EVANSVILLE APP CON ★ <b>124.025 290.9</b>	UNICOM <b>122.8 (CTAF) 0</b>
--------------------------	--	---------------------------------



	EPPOW	VUSWO	2500	ZUTJO
	2500	2100	2100	
	GP 3.00° TCH 40			
	027°	2100	1.5 NM to RWY 3	
	6.7 NM	3.3 NM	1.5 NM	
CATEGORY	A	B	C	D
LPV DA	780-1	250 (300-1)		NA
LNAV/VNAV DA	780-1	250 (300-1)		NA
LNAV MDA	1040-1	510 (600-1)	1040-1 $\frac{3}{8}$ 510 (600-1 $\frac{3}{8}$ )	NA
<b>CIRCLING</b>	1040-1 503 (600-1)	1100-1 563 (600-1)	1300-2 $\frac{1}{4}$ 763 (800-2 $\frac{1}{4}$ )	NA

HARTFORD, KENTUCKY

Orig-F 05SEP24

OHIO COUNTY (JQD)

37°28'N - 86°51'W

# RNAV (GPS) RWY 3

SE-1, 07 AUG 2025 to 04 SEP 2025

SE-1, 07 AUG 2025 to 04 SEP 2025