

HARTFORD, KENTUCKY

AL-9266 (FAA)

23222

WAAS CH <b>90526</b> <b>W21A</b>	APP CRS <b>207°</b>	Rwy Idg <b>5003</b> TDZE <b>537</b> Apt Elev <b>537</b>
--	------------------------	---

# RNAV (GPS) RWY 21

OHIO COUNTY (JQD)

RNP APCH - GPS.

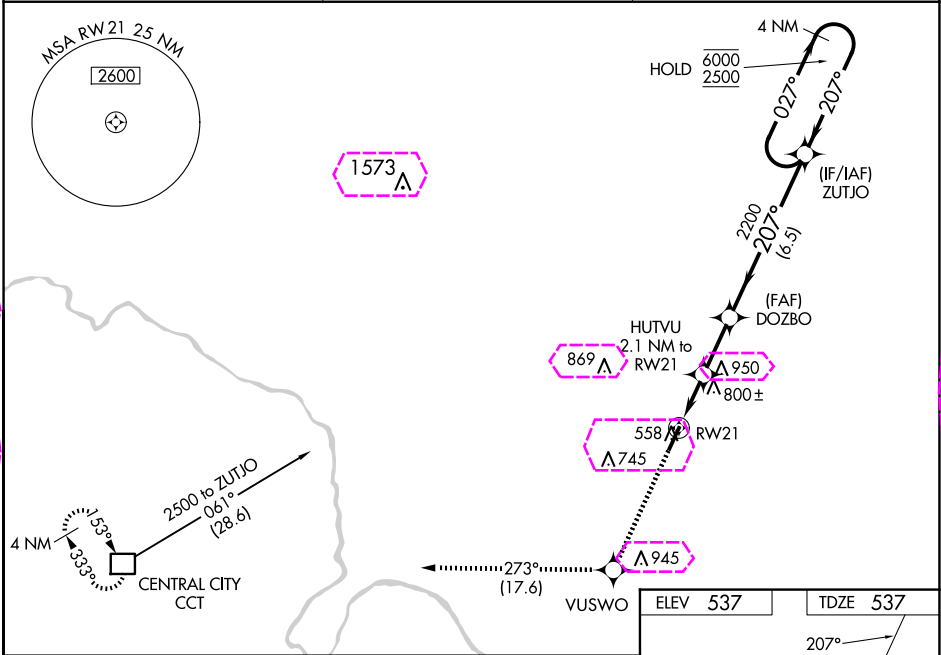
▼

▲

Baro-VNAV NA when using Owensboro altimeter setting. For uncompensated Baro-VNAV systems, LNAV/VNAV NA below -16°C or above 54°C. When local altimeter setting not received, use Owensboro altimeter setting and increase LPV DA to 858 feet, increase LNAV/VNAV DA to 1082 feet. Increase all MDA 80 feet, increase LNAV/VNAV visibilities all Cats ¼ SM, increase LNAV and Circling Cat C visibility ¼ SM. Rwy 21 helicopter visibility reduction below 1 SM NA. Procedure NA at night.

MISSED APPROACH:  
Climb to 3000 direct VUSWO and on track 273° to CCT DME and hold.

AWOS-3PT <b>132.1</b>	EVANSVILLE APP CON ★ <b>124.025 290.9</b>	UNICOM <b>122.8 (CTAF) 0</b>
--------------------------	--	---------------------------------



3000

VUSWO

CCT

↑

✦

tr 273°

\*LNAV only.

HUTVU  
2.1 NM to  
RW21

DOZBO

ZUTJO

4 NM  
Holding Pattern

RW21

2200

207°

027°

6000

2500

GP 3.50°

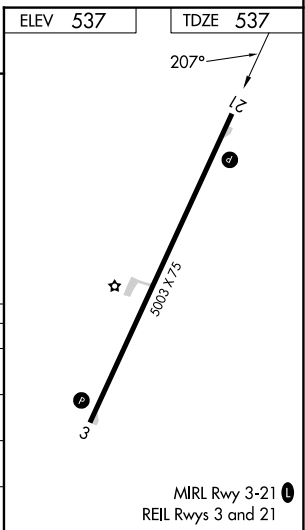
TCH 47

2.1 NM

2.3 NM

6.5 NM

CATEGORY	A	B	C	D
LPV DA	787-1	250 (300-1)	807-1 270 (300-1)	NA
LNAV/VNAV DA	1011-1⅜	474 (500-1⅝)		NA
LNAV MDA	1060-1	523 (600-1)	1060-1½ 523 (600-1½)	NA
<b>CIRCLING</b>	1060-1 523 (600-1)	1100-1 563 (600-1)	1300-2¼ 763 (800-2¼)	NA



HARTFORD, KENTUCKY

AL-9266 (FAA)

25219

WAAS CH <b>90526</b> <b>W21A</b>	APP CRS <b>207°</b>	Rwy Ldg TDZE <b>537</b> Apt Elev <b>537</b>
--	------------------------	---

# RNAV (GPS) RWY 21

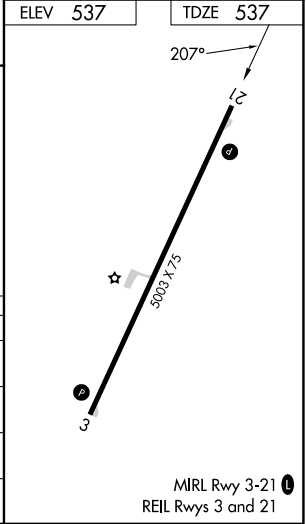
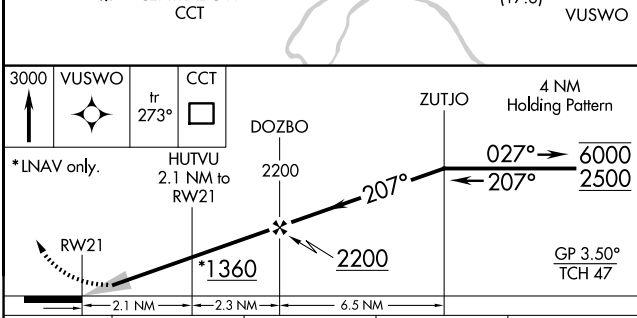
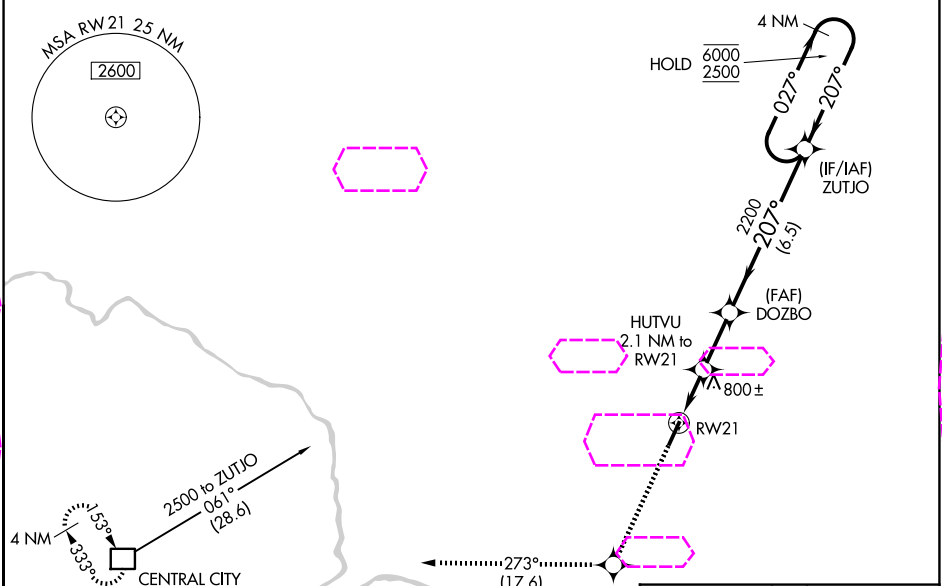
OHIO COUNTY (JQD)

RNP APCH - GPS.

Baro-VNAV NA when using Owensboro altimeter setting. For uncompensated Baro-VNAV systems, LNAV/VNAV NA below -16°C or above 54°C. When local altimeter setting not received, use Owensboro altimeter setting and increase LPV DA to 858 feet, increase LNAV/VNAV DA to 1082 feet. Increase all MDA 80 feet, increase LNAV/VNAV visibilities all Cats ¼ SM, increase LNAV and Circling Cat C visibility ¼ SM. Rwy 21 helicopter visibility reduction below 1 SM NA. Procedure NA at night.

MISSED APPROACH: Climb to 3000 direct VUSWO and on track 273° to CCT DME and hold.

AWOS-3PT <b>132.1</b>	EVANSVILLE APP CON ★ <b>124.025 290.9</b>	UNICOM <b>122.8 (CTAF) 0</b>
--------------------------	--	---------------------------------



CATEGORY	A	B	C	D
LPV DA	787-1 250 (300-1)		807-1 270 (300-1)	NA
LNAV/VNAV DA	1011-1 3/8 474 (500-1 3/8)			NA
LNAV MDA	1060-1 523 (600-1)		1060-1 1/2 523 (600-1 1/2)	NA
CIRCLING	1060-1 523 (600-1)	1100-1 563 (600-1)	1300-2 1/4 763 (800-2 1/4)	NA

HARTFORD, KENTUCKY  
Orig-E 22APR21

37°28'N-86°51'W

OHIO COUNTY (JQD)

# RNAV (GPS) RWY 21