

TAMPA EXEC (VDF)  
RNAV (GPS) RWY 5

SE-3, 10 JUL 2025 to 07 AUG 2025

TAMPA, FLORIDA

AL-9241 (FAA)

25219

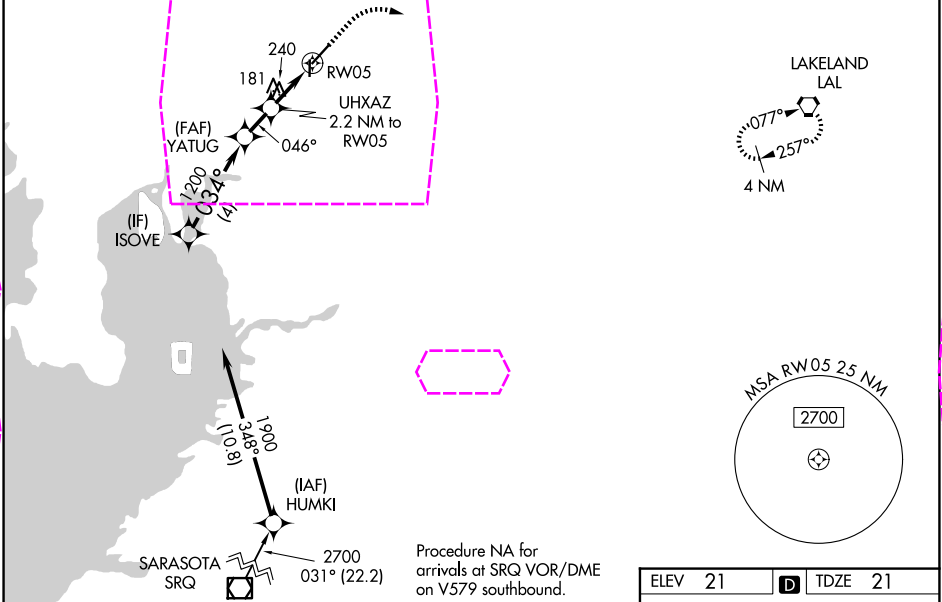
WAAS CH <b>97426</b> <b>W05A</b>	APP CRS <b>046°</b>	Rwy Ldg TDZE <b>21</b> Apt Elev <b>21</b>
--	------------------------	---

# RNAV (GPS) RWY 5

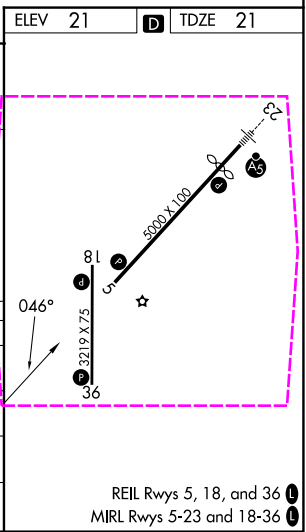
TAMPA EXEC (VDF')

RNP APCH-GPS.	MISSED APPROACH: Climb to 600 then climbing right turn to 2000 direct LAL VORTAC and hold.
---------------	---

AWOS-3 <b>121.125</b>	TAMPA APP CON <b>119.9 290.3</b>	UNICOM <b>122.7 (CTAF) 0</b>
--------------------------	-------------------------------------	---------------------------------



VGSI and RNAV glidepath not coincident (VGSI Angle 3.02/TCH 45).				
CATEGORY	A	B	C	D
LPV DA	271-7/8		250 (300-7/8)	NA
RNAV/VNAV DA	507-15/8		486 (500-15/8)	NA
RNAV MDA	500-1	479 (500-1)	500-13/8 479 (500-13/8)	NA
CIRCLING	540-1 519 (600-1)	760-1 739 (800-1)	800-21/4 779 (800-21/4)	NA



TAMPA, FLORIDA  
Orig-E 07OCT21

28°01'N-82°21'W

# RNAV (GPS) RWY 5

TAMPA EXEC (VDF')