

TAMPA, FLORIDA

AL-9241 (FAA)

22083

WAAS CH 78100 W23A	APP CRS 226°	Rwy Idg 4200 TDZE 21 Apt Elev 21
--	------------------------	---

RNAV (GPS) RWY 23

TAMPA EXEC (VDF')

RNP APCH-GPS.

- ▼ Inop table does not apply to LPV and LNAV Cat A/B. Baro-VNAV NA when using Tampa Intl altimeter setting. For uncompensated Baro-VNAV systems, LNAV/VNAV NA below -15°C (5°F) or above 54°C (130°F). Rwy 23 helicopter visibility reduction below 3/4 SM NA. When local altimeter setting not received, use Tampa Intl altimeter setting and increase LPV DA to 323 feet, LNAV/VNAV DA to 513; increase all MDAs 40 feet, and LNAV and Circling Cat C visibilities 1/4 SM. Circling Rwy 18, 36 NA at night.
- ▲

MALSR

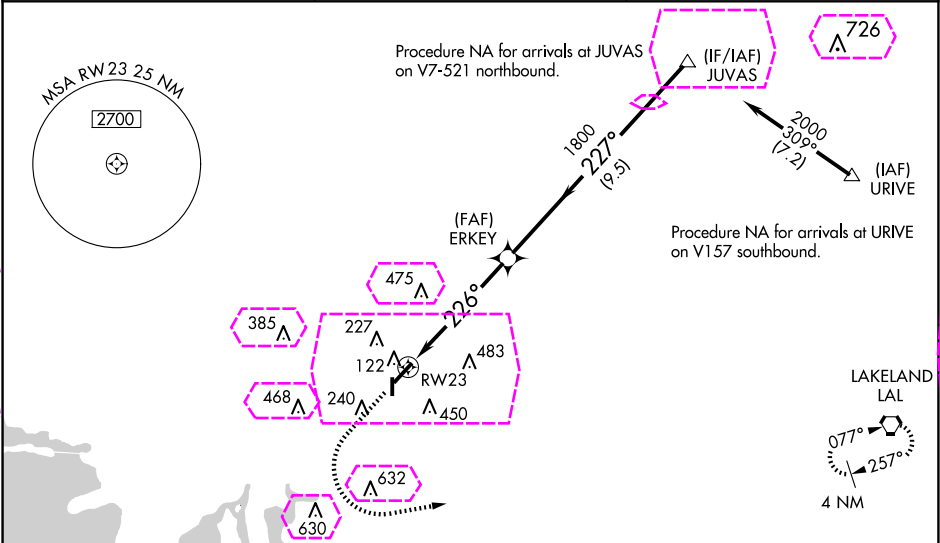


MISSED APPROACH:
Climb to 800 then climbing left turn to 2700 direct to LAL VORTAC and hold.

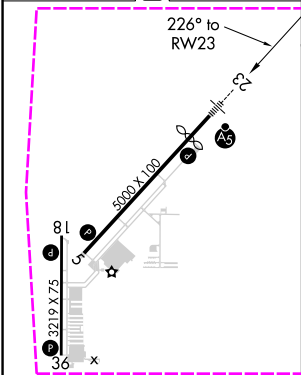
AWOS-3
121.125

TAMPA APP CON
119.9 290.3

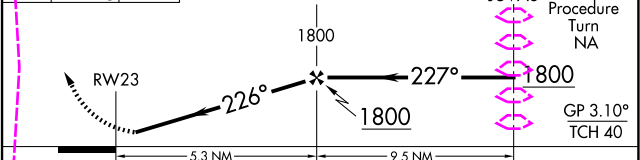
UNICOM
122.7 (CTAF)



ELEV 21	D	TDZE 21
---------	---	---------



800	2700	LAL
-----	------	-----



CATEGORY	A	B	C	D
LPV DA	298-1	277 (300-1)		NA
LNAV/VNAV DA	488-1 1/8	467 (500-1 1/8)		NA
LNAV MDA	560-1	539 (600-1)		NA
CIRCLING	560-1 539 (600-1)	760-1 739 (800-1)	800-2 1/4 779 (800-2 1/4)	NA

TAMPA, FLORIDA
Amdt 1E 07OCT21

28°01'N-82°21'W

TAMPA EXEC (VDF')
RNAV (GPS) RWY 23

TAMPA, FLORIDA

AL-9241 (FAA)

25219

WAAS CH 78100 W23A	APP CRS 226°	Rwy Ldg 4200 TDZE 21 Apt Elev 21
--	------------------------	---

RNAV (GPS) RWY 23
TAMPA EXEC (VDF')

RNP APCH-GPS.

- ▼ Inop table does not apply to LPV and LNAV Cat A/B. Baro-VNAV NA when using Tampa Intl altimeter setting. For uncompensated Baro-VNAV systems, LNAV/VNAV NA below -15°C (5°F) or above 54°C (130°F). Rwy 23 helicopter visibility reduction below ¾ SM NA. When local altimeter setting not received, use Tampa Intl altimeter setting and increase LPV DA to 323 feet, LNAV/VNAV DA to 513; increase all MDAs 40 feet, and LNAV and Circling Cat C visibilities ¼ SM. Circling Rwy 18, 36 NA at night.
- ▲

MALSR

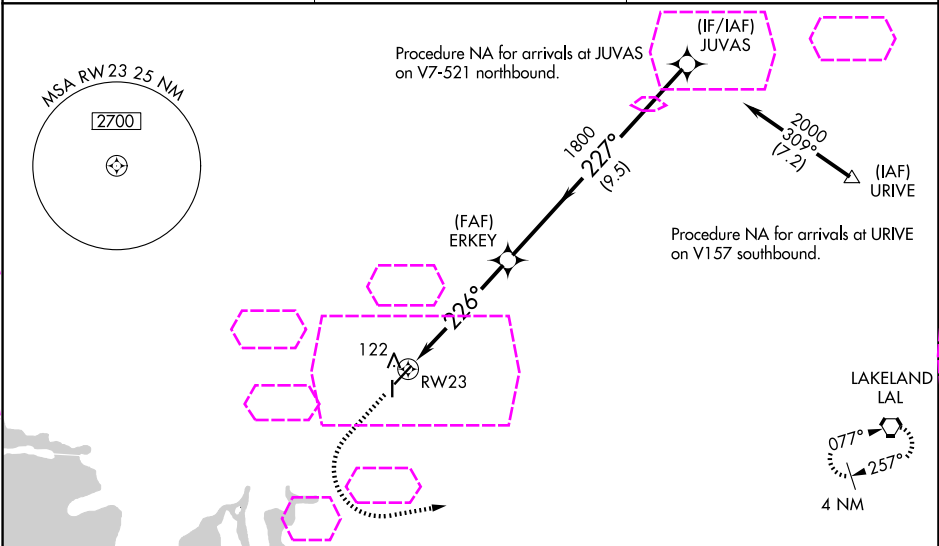


MISSED APPROACH:
Climb to 800 then climbing left turn to 2700 direct to LAL VORTAC and hold.

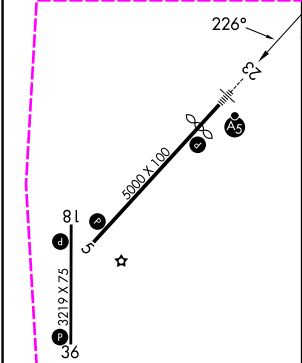
AWOS-3
121.125

TAMPA APP CON
119.9 290.3

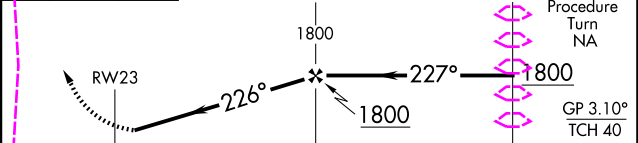
UNICOM
122.7 (CTAF) 0



ELEV 21	D	TDZE 21
---------	---	---------



800	2700	LAL
-----	------	-----



CATEGORY	A	B	C	D
LPV DA	298-1	277 (300-1)		NA
LNAV/VNAV DA	488-1½	467 (500-1½)		NA
LNAV MDA	560-1	539 (600-1)		NA
CIRCLING	560-1 539 (600-1)	760-1 739 (800-1)	800-2¼ 779 (800-2¼)	NA

TAMPA, FLORIDA

Amdt 1E 07OCT21

28°01'N-82°21'W

TAMPA EXEC (VDF')

RNAV (GPS) RWY 23

SE-3, 07 AUG 2025 to 04 SEP 2025

SE-3, 07 AUG 2025 to 04 SEP 2025