

TAMPA, FLORIDA

AL-9241 (FAA)

22083

APP CRS	Rwy Idg	3219
184°	TDZE	19
	Apt Elev	21

RNAV (GPS) RWY 18

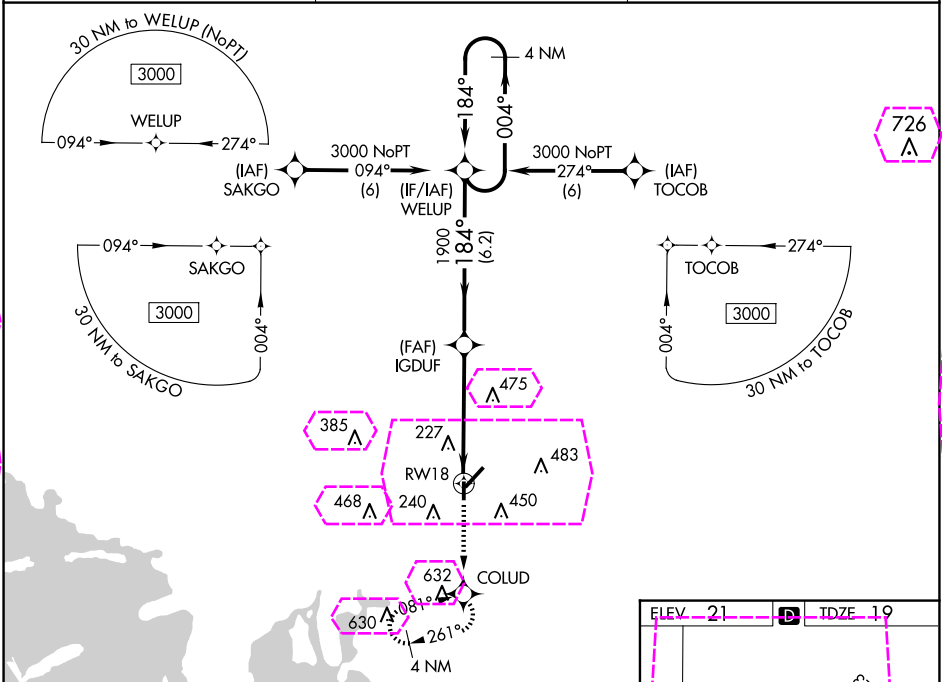
TAMPA EXEC (VDF')

RNP APCH.

When local altimeter not received, use Tampa Intl altimeter setting and increase all MDA 40 feet. Straight-in Rwy 18 NA at night, Circling Rwy 18, 36 NA at night. Rwy 18 helicopter visibility reduction below 1 SM NA.

MISSED APPROACH: Climb to 3000 direct COLUD and hold, continue climb-in-hold to 3000.

AWOS-3 121.125	TAMPA APP CON 119.9 290.3	UNICOM 122.7 (CTAF) 0
-------------------	------------------------------	--------------------------



3000 COLUD

VGSI and descent angles not coincident (VGSI Angle 3.80/TCH 41).

IGDUF

WELUP

4 NM Holding Pattern

184°

004°

3000

1900

≤ 3.50° TCH 45

4.9 NM

6.2 NM

CATEGORY	A	B	C	D
LNAV MDA	580-1	561 (600-1)	NA	
CIRCLING	580-1 559 (600-1)	760-1 739 (800-1)	NA	

ELEV 21 TDZE 19

184° to RW18

3000 x 100

8 L

36

3219 x 75

45

36

REIL Rwy 5, 18, and 36 0
MIRL Rwy 5-23 and 18-36 0

TAMPA, FLORIDA
Amdt 1B 25APR19

28°01'N-82°21'W

TAMPA EXEC (VDF')
RNAV (GPS) RWY 18

TAMPA, FLORIDA

AL-9241 (FAA)

25219

APP CRS	Rwy Ldg	3219
184°	TDZE	19
	Apt Elev	21

RNAV (GPS) RWY 18

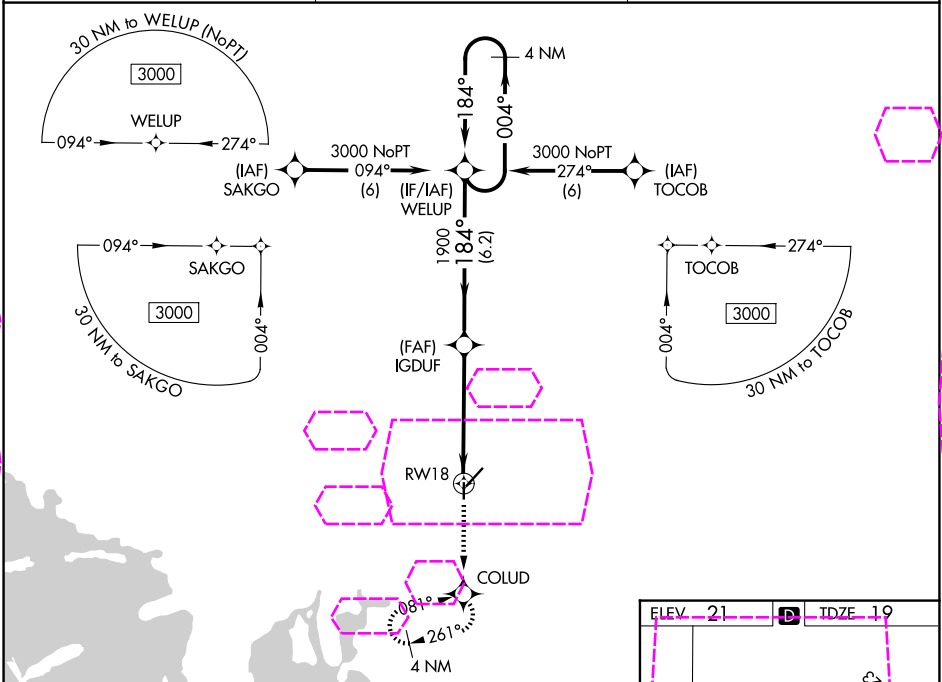
TAMPA EXEC (VDF')



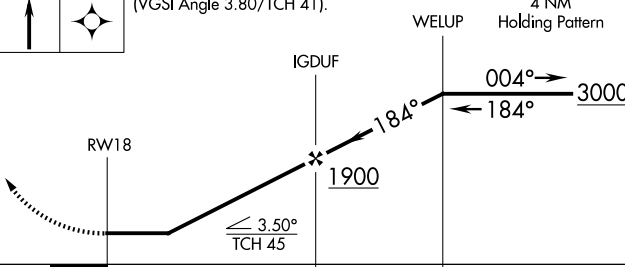
RNP APCH.

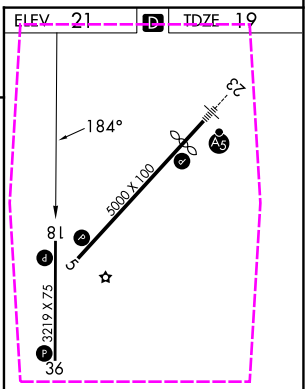
When local altimeter not received, use Tampa Intl altimeter setting and increase all MDA 40 feet. Straight-in Rwy 18 NA at night, Circling Rwy 18, 36 NA at night. Rwy 18 helicopter visibility reduction below 1 SM NA.

MISSED APPROACH: Climb to 3000 direct COLUD and hold, continue climb-in-hold to 3000.

AWOS-3 121.125	TAMPA APP CON 119.9 290.3	UNICOM 122.7 (CTAF) 0
-------------------	------------------------------	--------------------------



3000	COLUD	VGSI and descent angles not coincident (VGSI Angle 3.80/TCH 41).			
					
					
		4.9 NM		6.2 NM	
CATEGORY	A	B	C	D	
LNAV MDA	580-1 561 (600-1)		NA		
CIRCLING	580-1 559 (600-1)	760-1 739 (800-1)	NA		



TAMPA, FLORIDA
Amdt 1B 25APR19

28°01'N-82°21'W

RNAV (GPS) RWY 18

TAMPA EXEC (VDF')

REIL Rwy 5, 18, and 36 0
MIRL Rwy 5-23 and 18-36 0