

TAMPA, FLORIDA

AL-9241 (FAA)

23334

LOC/DME I-VDF 111.35 Chan 50 (Y)	APP CRS 226°	Rwy Idg 4200 TDZE 21 Apt Elev 21
---	------------------------	---

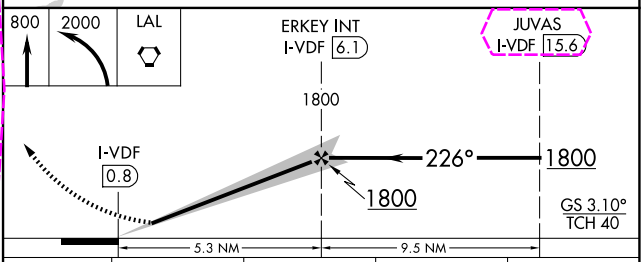
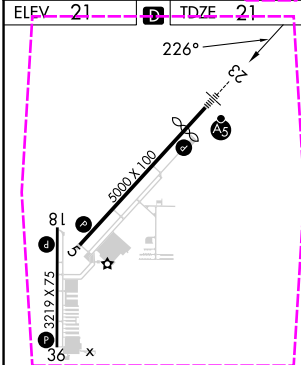
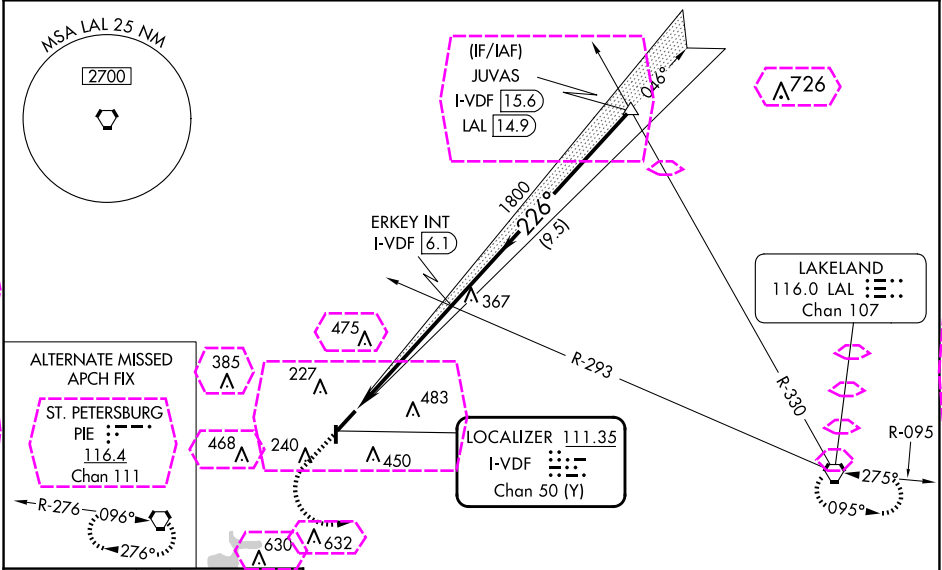
ILS or LOC RWY 23
TAMPA EXEC (VDF')

⚠ When local altimeter setting not received, use Tampa Intl altimeter setting and increase S-ILS 23 DA to 323; increase all MDA 40 feet and S-LOC and Circling Cat C visibilities ¼ SM. For inop MALS when using Tampa Intl altimeter setting, increase S-LOC 23 Cat C visibility to 1½. Inop table does not apply to S-ILS 23 and S-LOC 23 Cats A/B. Rwy 23 helicopter visibility reduction below ¾ SM NA. Circling Rwy 18, 36 NA at night.

MALS

MISSED APPROACH: Climb to 800 then climbing left turn to 2000 direct LAL VORTAC and hold.

AWOS-3 121.125	TAMPA APP CON 119.9 290.3	UNICOM 122.7 (CTAF) 0
--------------------------	-------------------------------------	---------------------------------



REIL Rws 5, 18, and 36 ① MIRL Rws 5-23 and 18-36 ① FAF to MAP 5.3 NM						CATEGORY	A	B	C	D
						S-ILS 23	298-1 277 (300-1)			NA
						S-LOC 23	560-1 539 (600-1)			NA
Knots	60	90	120	150	180	CIRCLING	560-1 539 (600-1)	760-1 739 (800-1)	800-2¼ 779 (800-2¼)	NA
Min:Sec	5:18	3:32	2:39	2:07	1:46					

TAMPA, FLORIDA
Amdt 1E 07OCT21

28°01'N-82°21'W

TAMPA EXEC (VDF')
ILS or LOC RWY 23

SE-3, 10 JUL 2025 to 07 AUG 2025

SE-3, 10 JUL 2025 to 07 AUG 2025

TAMPA, FLORIDA

AL-9241 (FAA)

25219

LOC/DME I-VDF 111.35 Chan 50 (Y)	APP CRS 226°	Rwy Ldg 4200 TDZE 21 Apt Elev 21
---	------------------------	---

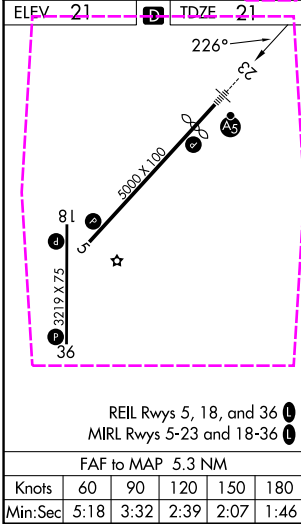
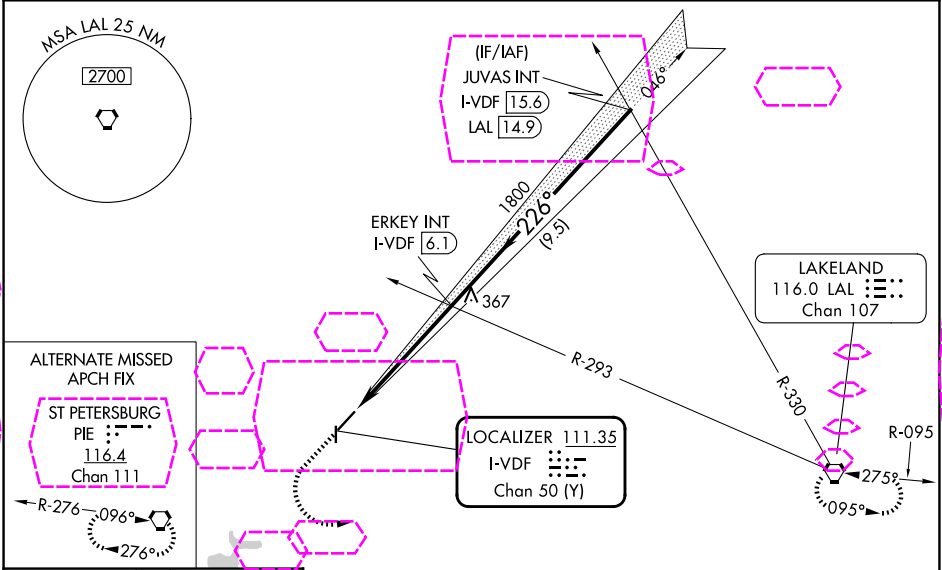
ILS or LOC RWY 23
TAMPA EXEC (VDF')

⚠ When local altimeter setting not received, use Tampa Intl altimeter setting and increase S-ILS 23 DA to 323; increase all MDA 40 feet and S-LOC and Circling Cat C visibilities ¼ SM. For inop MALS when using Tampa Intl altimeter setting, increase S-LOC 23 Cat C visibility to 1½. Inop table does not apply to S-ILS 23 and S-LOC 23 Cats A/B. Rwy 23 helicopter visibility reduction below ¾ SM NA. Circling Rwy 18, 36 NA at night.

MALS

MISSED APPROACH: Climb to 800 then climbing left turn to 2000 direct LAL VORTAC and hold.

AWOS-3 121.125	TAMPA APP CON 119.9 290.3	UNICOM 122.7 (CTAF) 0
--------------------------	-------------------------------------	---------------------------------



<div><p>800 2000 LAL</p></div> <div><p>ERKEY INT I-VDF 6.1</p><p>JUVAS INT I-VDF 15.6</p><p>1800 226° 1800</p><p>I-VDF 0.8</p><p>GS 3.10° TCH 40</p><p>5.3 NM 9.5 NM</p></div>				
CATEGORY	A	B	C	D
S-ILS 23	298-1	277 (300-1)		NA
S-LOC 23	560-1	539 (600-1)		NA
CIRCLING	560-1 539 (600-1)	760-1 739 (800-1)	800-2¼ 779 (800-2¼)	NA

TAMPA, FLORIDA
Amdt 1E 07OCT21

28°01'N-82°21'W

TAMPA EXEC (VDF')
ILS or LOC RWY 23