

VOR/DME WLK <b>114.2</b> Chan <b>89</b>	APP CRS <b>029°</b>	Rwy Ldg <b>3002</b> TDZE <b>17</b> Apt Elev <b>17</b>
---	------------------------	---

VOR RWY 4  
SELAWIK (WLK) (PASK)

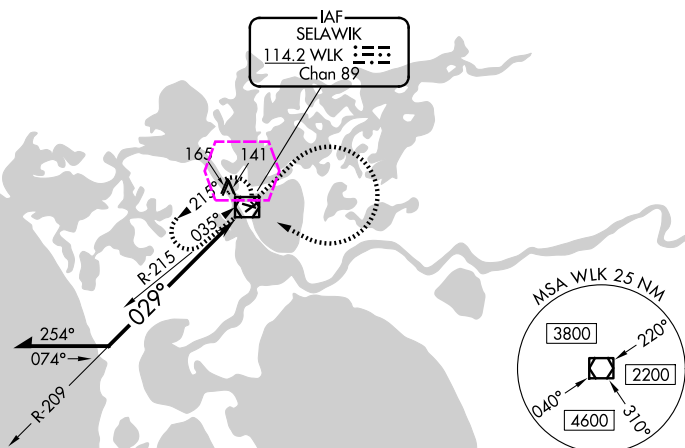


Rwy 4 helicopter visibility reduction below  $\frac{3}{4}$  SM NA.  
Circling Rwy 9, 27 NA at night.

**MISSED APPROACH:** Climb to 1000 then climbing right turn to 2500 direct WLK VOR/DME and hold, continue climb-in-hold to 2500.

AWOS-3P <b>135.65</b>	ANCHORAGE CENTER <b>119.2 263.0</b>	KOTZEBUE RADIO <b>122.5</b>	CTAF <b>122.7 0</b>
--------------------------	--	--------------------------------	------------------------

- 1333






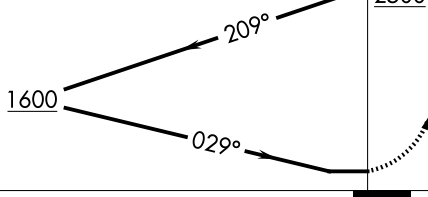
AK, 12 JUN 2025 to 07 AUG 2025

ELEV 17		TDZE 17
---------	--	---------

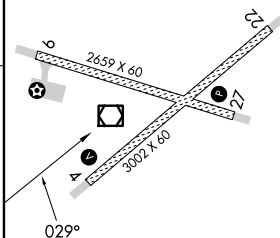
Remain  
within 10 NM

WLK  
VOR/DME  
2500

1000	2500	WLK
		



CATEGORY	A	B	C	D
S-4	520-1 503 (600-1)		520-1½ 503 (600-1½)	
CIRCLING	520-1 503 (600-1)	580-1 563 (600-1)	580-1½ 563 (600-1½)	580-2 563 (600-2)

MIRL Rwy 9-27 and 4-22 **L**

SELA WIK, ALASKA  
Amdt 1D 17JUN21

66°36'N-159°59'W

SELAWIK (WLK) (PASK)  
VOR RWY 4

SELAWIK, ALASKA

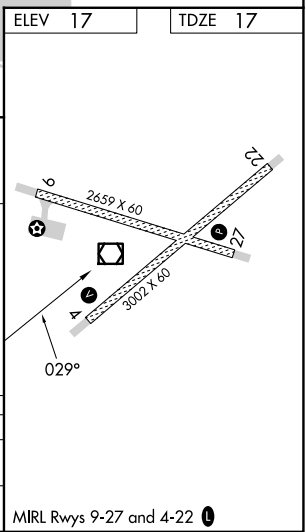
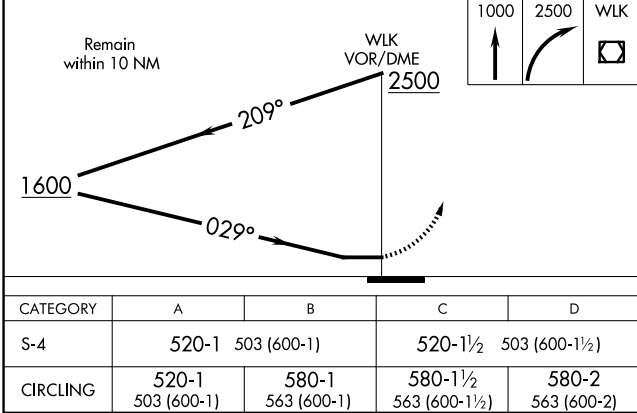
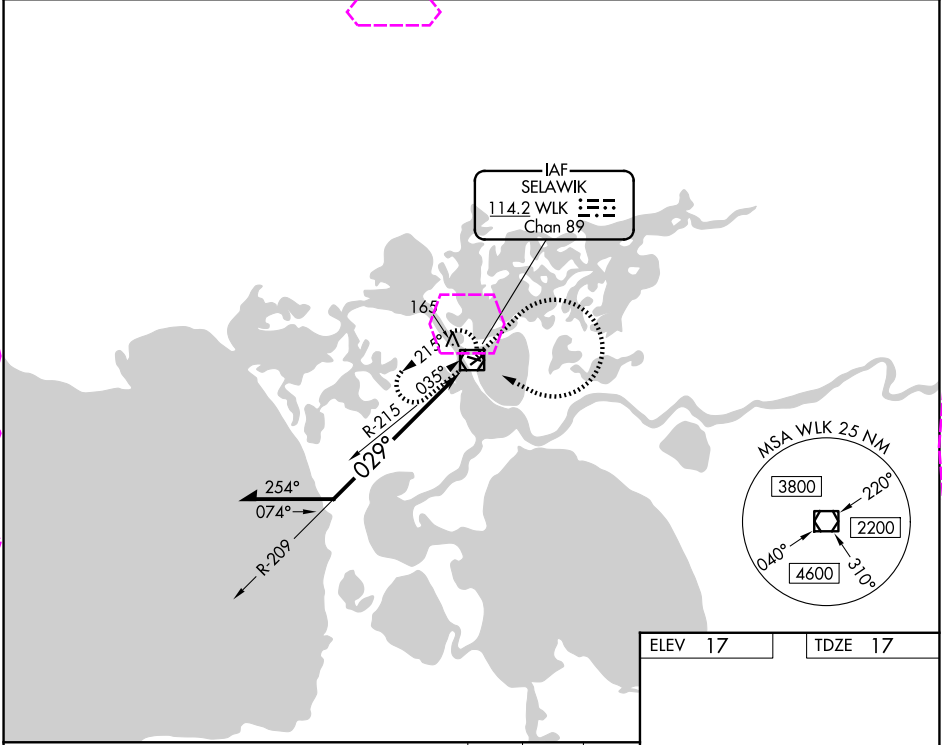
AL-9207 (FAA)

25219

VOR/DME WLK	APP CRS	Rwy Ldg	3002
114.2	029°	TDZE	17
Chan 89		Apt Elev	17

VOR RWY 4  
SELAWIK (WLK) (PASK)

▼ Rwy 4 helicopter visibility reduction below ¾ SM NA. Circling Rwy 9, 27 NA at night.		MISSED APPROACH: Climb to 1000 then climbing right turn to 2500 direct WLK VOR/DME and hold, continue climb-in-hold to 2500.	
AWOS-3P 135.65	ANCHORAGE CENTER 119.2 263.0	KOTZEBUE RADIO 122.5	CTAF 122.7 0



SELAWIK, ALASKA	SELAWIK (WLK) (PASK)
Amdt 1D 17JUN21	VOR RWY 4
66°36'N-159°59'W	