

SELAWIK, ALASKA

AL-9207 (FAA)

25163

VOR/DME WLK

114.2

Chan 89

APP CRS

223°

Rwy Ldg

3002

TDZE

17

Apt Elev

17

VOR RWY 22

SELAWIK (WLK) (PASK)

⚠

Circling Rwy 9, 27 NA at night.

MISSED APPROACH: Climb to 1000 then climbing left turn to 2500 direct WLK VOR/DME and hold, continue climb-in-hold to 2500.

AWOS-3P

135.65

ANCHORAGE CENTER

119.2 263.0

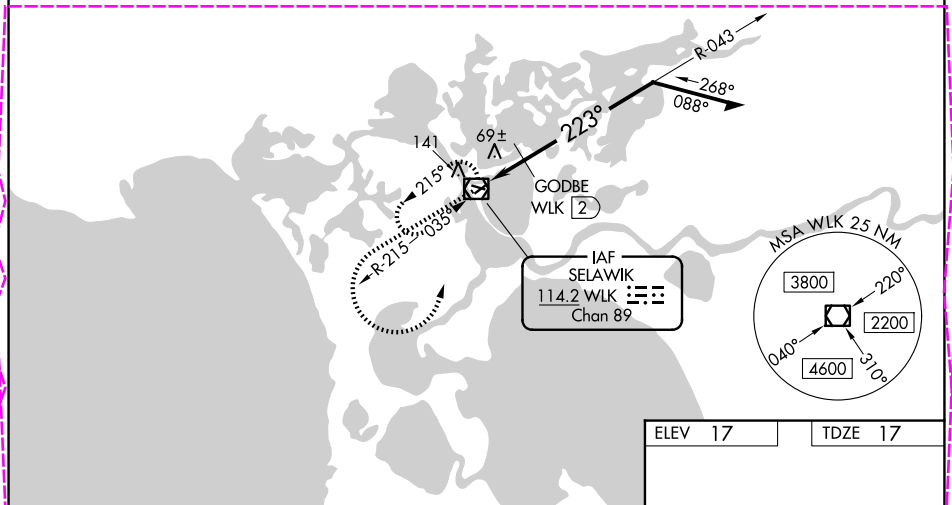
KOTZEBUE RADIO

122.5

CTAF

122.7

• 1333



1000

2500

WLK

↑

↩

◻

WLK VOR/DME

2500

043°

1600

223°

400

1.6 NM

Remain within 10 NM

CATEGORY	A	B	C	D
S-22	400-1	383 (400-1)	400-1¼	383 (400-1¼)
CIRCLING	480-1 463 (500-1)	580-1 563 (600-1)	580-1½ 563 (600-½)	580-2 563 (600-2)

GODBE FIX MINIMUMS

S-22	340-1	323 (400-1)		
CIRCLING	480-1 463 (500-1)	580-1 563 (600-1)	580-1½ 563 (600-½)	580-2 563 (600-2)

MIRL Rwy 9-27 and 4-22

223°

2659 X 60

3002 X 60

27

22

SELAWIK, ALASKA

AL-9207 (FAA)

25219

VOR/DME WLK

114.2

Chan 89

APP CRS

223°

Rwy Ldg

3002

TDZE

17

Apt Elev

17

VOR RWY 22

SELAWIK (WLK) (PASK)

⚠

Circling Rwy 4, 9, 27 NA at night. When local altimeter setting not received, use OTZ/PAOT altimeter setting and increase all MDAs 160 feet and S-22 visibility Cat C/D ½ SM. And GODBE fix minimums visibility Cat C/D ½ SM, and Circling visibility Cat C/D ½ SM.

MISSED APPROACH: Climb to 1000 then climbing left turn to 2500 direct WLK VOR/DME and hold, continue climb-in-hold to 2500.

AWOS-3P

135.65

ANCHORAGE CENTER

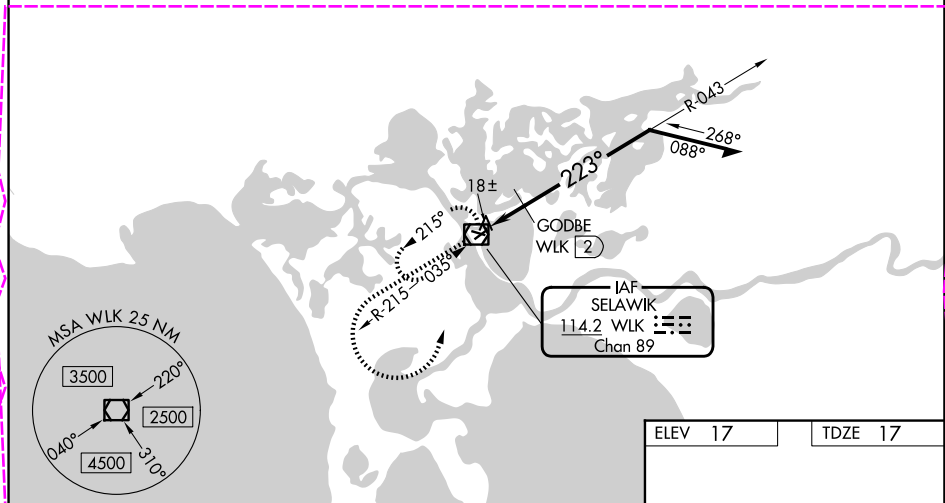
119.2 263.0

KOTZEBUE RADIO

122.5

CTAF

122.7 0



1000

2500

WLK

↑

↶

◻

WLK VOR/DME

2500

043°

GODBE WLK 2

≤ 2.91°

TCH 55

223°

1700

400

1.6 NM

Remain within 10 NM

CATEGORY	A	B	C	D
S-22	400-1	383 (400-1)	400-1½	383 (400-1½)
CIRCLING	480-1 463 (500-1)	580-1 563 (600-1)	580-1½ 563 (600-1½)	580-2 563 (600-2)

GODBE FIX MINIMUMS

S-22	380-1	363 (400-1)		
CIRCLING	480-1 463 (500-1)	580-1 563 (600-1)	580-1½ 563 (600-1½)	580-2 563 (600-2)

MIRL Rwy 9-27 and 4-22 0