

SELAWIK, ALASKA

AL-9207 (FAA)

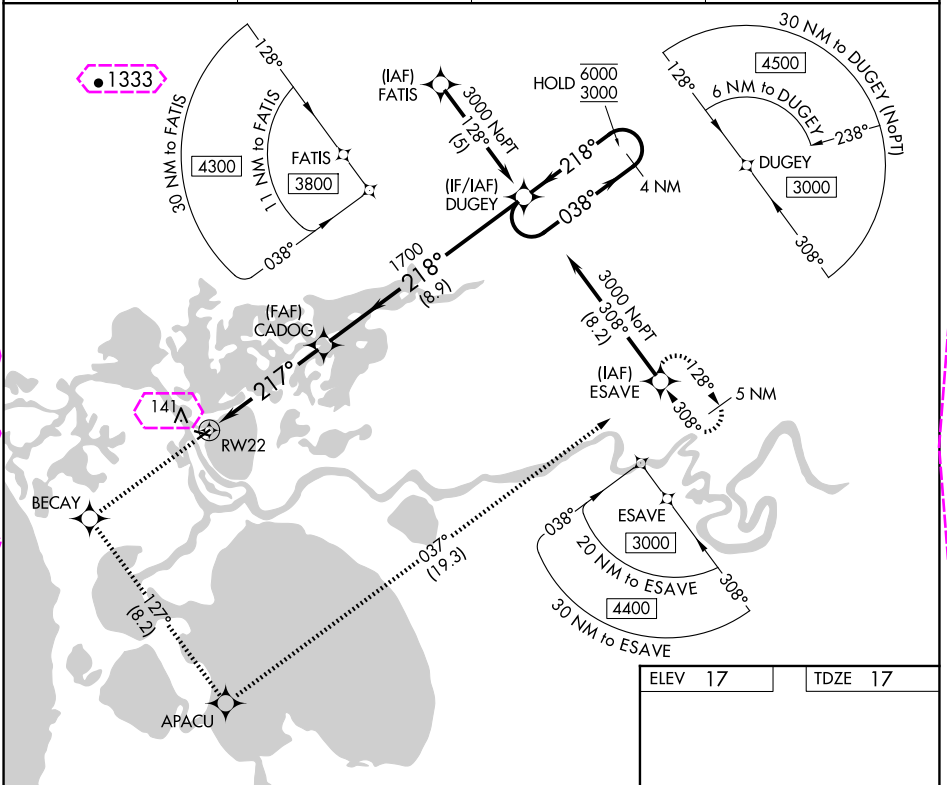
25163

WAAS CH <b>40404</b> <b>W22A</b>	APP CRS <b>217°</b>	Rwy Ldg <b>3002</b> TDZE <b>17</b> Apt Elev <b>17</b>
--	------------------------	---

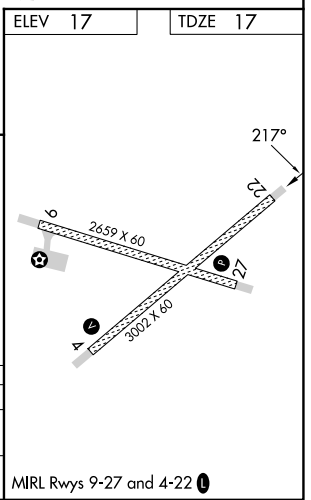
# RNAV (GPS) Z RWY 22

SELAWIK (WLK) (PASK)

RNP APCH. ▼ For uncompensated Baro-VNAV systems, LNAV/VNAV NA below -25°C or above 49°C.		MISSED APPROACH: Climb to 3000 direct BECAY and left turn on track 127° to APACU and left turn on track 037° to ESAVE and hold.	
AWOS-3P <b>135.65</b>	ANCHORAGE CENTER <b>119.2 263.0</b>	KOTZEBUE RADIO <b>122.5</b>	CTAF <b>122.7 0</b>



3000	BECAY	APACU	ESAVE	DUGUEY
↑	tr 127°	tr 037°		4 NM Holding Pattern
CADOG 1700				
RWY 22 1700				
GP 3.00° TCH 45				
CATEGORY	A	B	C	D
LPV DA	267-1 250 (300-1)			
LNAV/VNAV DA	364-1¼ 347 (400-1¼)			



SELAWIK, ALASKA  
Orig-C 28FEB19

66°36'N-159°59'W

SELAWIK (WLK) (PASK)  
RNAV (GPS) Z RWY 22

AK, 12 JUN 2025 to 07 AUG 2025

AK, 12 JUN 2025 to 07 AUG 2025

SELAWIK, ALASKA

AL-9207 (FAA)

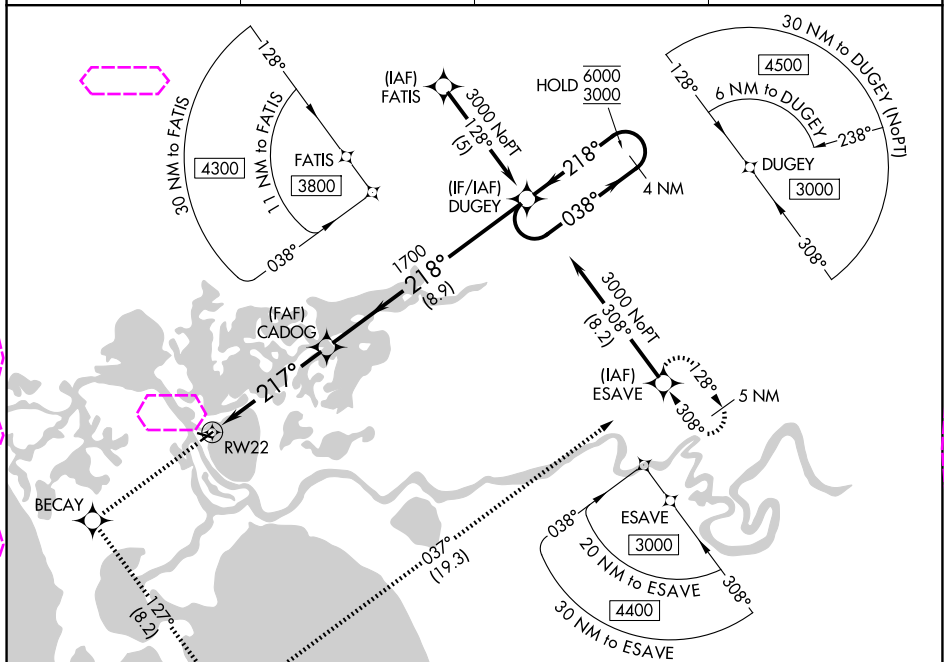
25219

WAAS CH <b>40404</b> <b>W22A</b>	APP CRS <b>217°</b>	Rwy Ldg <b>3002</b> TDZE <b>17</b> Apt Elev <b>17</b>
--	------------------------	---

# RNAV (GPS) Z RWY 22

SELAWIK (WLK) (PASK)

RNP APCH. ▼ For uncompensated Baro-VNAV systems, LNAV/VNAV NA below -25°C or above 49°C.		MISSED APPROACH: Climb to 3000 direct BECAY and left turn on track 127° to APACU and left turn on track 037° to ESAVE and hold.	
AWOS-3P <b>135.65</b>	ANCHORAGE CENTER <b>119.2 263.0</b>	KOTZEBUE RADIO <b>122.5</b>	CTAF <b>122.7 0</b>



ELEV 17		TDZE 17	
3000	BECAY	APACU	ESAVE
↑	tr 127°	tr 037°	
DUGEY 4 NM Holding Pattern			
CADOG 1700			
RWY 22 5.1 NM 8.9 NM			
GP 3.00° TCH 45			
CATEGORY	A	B	C
LPV DA	267-1	250 (300-1)	
LNAV/VNAV DA	364-1¼	347 (400-1¼)	
MIRL Rwy 9-27 and 4-22 0			

SELAWIK, ALASKA  
Orig-C 28FEB19

66°36'N-159°59'W

# SELAWIK (WLK) (PASK)

## RNAV (GPS) Z RWY 22