

SELAWIK, ALASKA

AL-9207 (FAA)

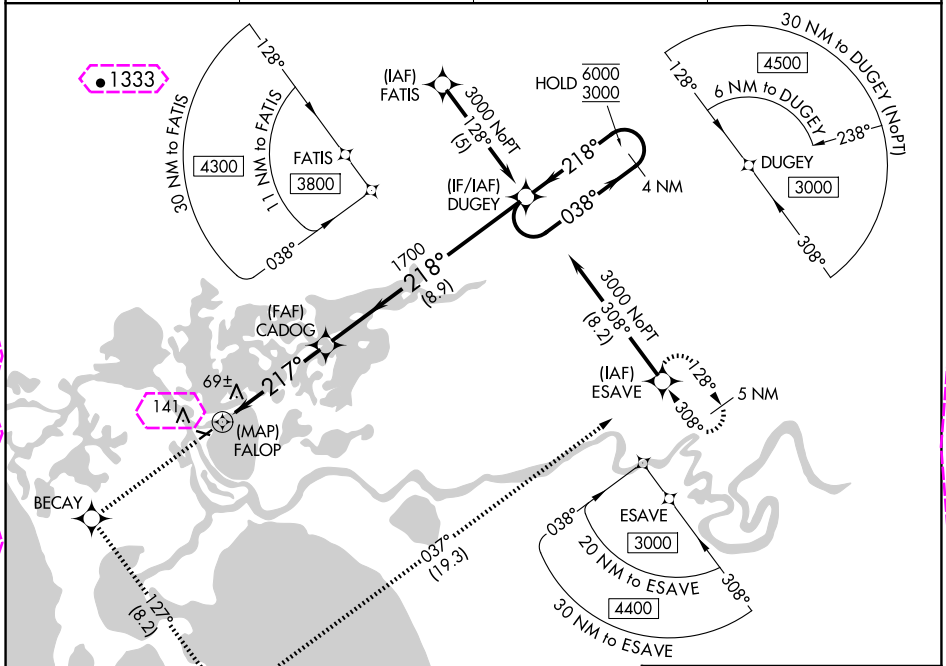
25163


APP CRS	Rwy Ldg	3002
217°	TDZE	17
	Apt Elev	17

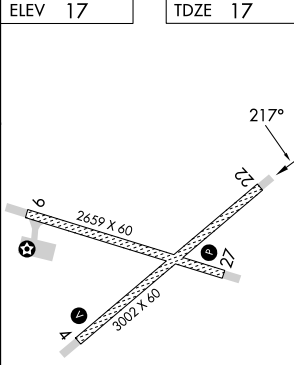
# RNAV (GPS) Y RWY 22

SELAWIK (WLK) (PASK)

RNP APCH.		MISSED APPROACH: Climb to 3000 direct BECAY and left turn on track 127° to APACU and left turn on track 037° to ESAVE and hold.	
Circling Rwy 9, 27 NA at night.			
AWOS-3P 135.65	ANCHORAGE CENTER 119.2 263.0	KOTZEBUE RADIO 122.5	CTAF 122.7 0



					ELEV 17		TDZE 17	
3000	BECAY	tr 127°	APACU	tr 037°	ESAVE	DUGEY 4 NM Holding Pattern		
FALOP 0.5 4.6 NM 8.9 NM					CADOG 217° 218° 038° 6000 3000			
CATEGORY		A	B	C	D			
LNAV MDA		320-1 303 (400-1)						
CIRCLING		480-1 463 (500-1)	580-1 563 (600-1)	580-1½ 563 (600-1½)	580-2 563 (600-2)			



MIRL Rwy 9-27 and 4-22

SELAWIK, ALASKA  
Orig-E 17JUN21

66°36'N-159°59'W

SELAWIK (WLK) (PASK)  
RNAV (GPS) Y RWY 22

MIRL Rwy 9-27 and 4-22

SELAWIK, ALASKA

AL-9207 (FAA)

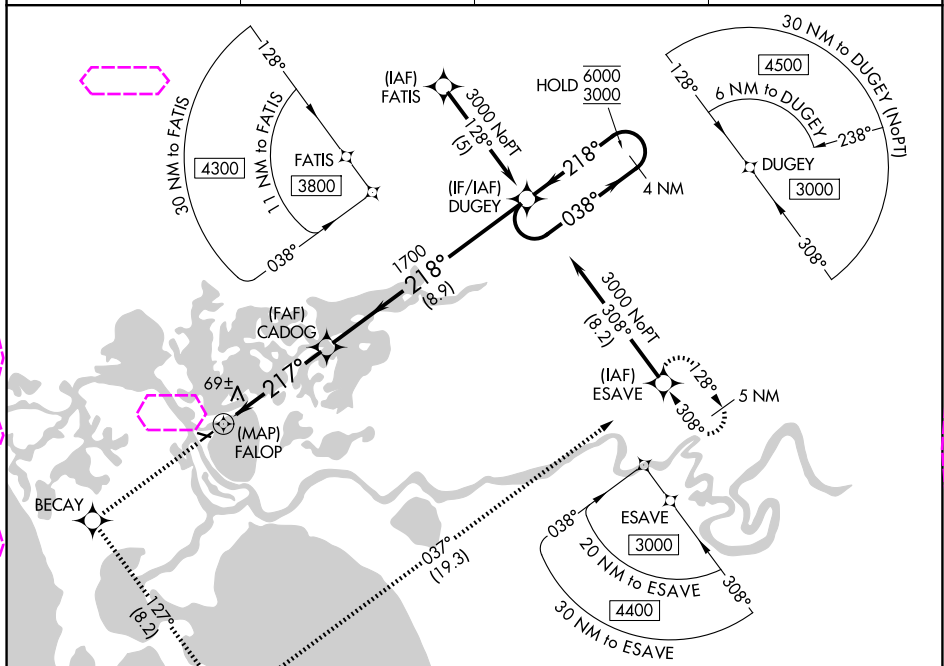
25219

APP CRS	Rwy Ldg	3002
217°	TDZE	17
	Apt Elev	17

# RNAV (GPS) Y RWY 22

SELAWIK (WLK) (PASK)

RNP APCH.		MISSED APPROACH: Climb to 3000 direct BECAY and left turn on track 127° to APACU and left turn on track 037° to ESAVE and hold.	
Circling Rwy 9, 27 NA at night.			
AWOS-3P 135.65	ANCHORAGE CENTER 119.2 263.0	KOTZEBUE RADIO 122.5	CTAF 122.7 0



ELEV 17		TDZE 17	
3000	BECAY	APACU	ESAVE
↑	tr 127°	tr 037°	
DUGEY 4 NM Holding Pattern			
CADOG			
FALOP ≤ 3.05° TCH 45			
0.5 4.6 NM 8.9 NM			
CATEGORY	A	B	C
LNVA MDA	320-1 303 (400-1)		
CIRCLING	480-1 463 (500-1)	580-1 563 (600-1)	580-1½ 563 (600-1½)
			580-2 563 (600-2)
MIRL Rwy 9-27 and 4-22 0			

SELAWIK, ALASKA  
Orig-E 17JUN21

66°36'N-159°59'W

SELAWIK (WLK) (PASK)  
RNAV (GPS) Y RWY 22

AK, 07 AUG 2025 to 02 OCT 2025

AK, 07 AUG 2025 to 02 OCT 2025